



TISCH TOWER TRANSFORMED!

Adjacent to Santana Row Amenities!



Patty
STEELE

Senior Managing Director • 408.982.8463
patty.steele@nrmk.com • CA RE License #00839635

Grant
MEYLAN

Managing Director • 408.987.4153
grant.meylan@nrmk.com • CA RE License #02078953

Andrea
BARTLINSKI

Brokerage Services Specialist • 408.982.8424
andrea.bartlinski@nrmk.com • CA RE License #01338254

NEWMARK

the **Muller**
company

BUILDING HIGHLIGHTS

TISCH TOWER

- Premier West Valley office building adjacent to Santana Row
- 12-story high rise with stunning panoramic views
- Amenity-rich environment with newly upgraded lobby, outdoor plaza seating areas and new fitness & conference center (now open)!
- Easy access to Interstate 280 & Highway 17
- Covered and surface parking – 3.6/1000
- Responsive on-site management and 24/7 security
- Within 5 minutes of the San Jose International Airport
- Energy Star Rating score 98%
- 6 EV Charging Stations
- Monument signage available





AVAILABLE TOWER SUITES

Suite 30	±1,258 rsf	Available Now
Suite 70	±1,511 rsf	Available Now
*Suite 100	±1,454 rsf	Available 4/1/26
*Suite 150	±2,518 rsf	Available Now
**Suite 700	±5,523 rsf	Available 3/15/26
**Suite 704	±1,159 rsf	Available 3/15/26

*Can combine for ±3,972 rsf

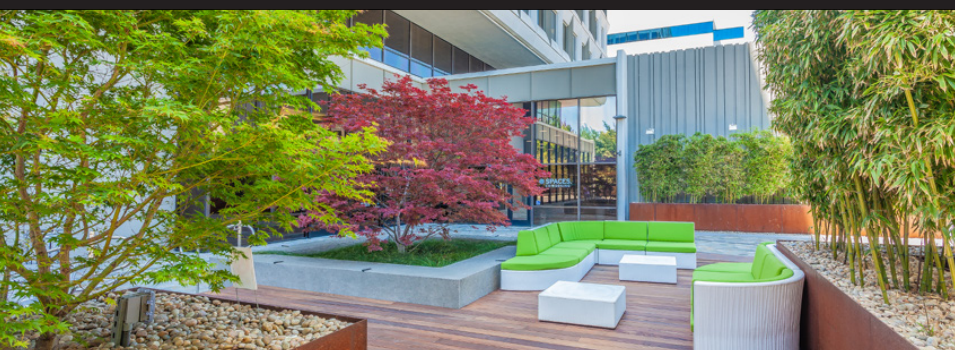
**Can combine for ±6,682 rsf

PLAZA SOUTH

First Floor	±10,159 rsf	Shell condition – TIs to suit!
-------------	-------------	--------------------------------

PLAZA EAST

Suite 200	±12,536 rsf	Available Q3/Q4 2026
-----------	-------------	----------------------



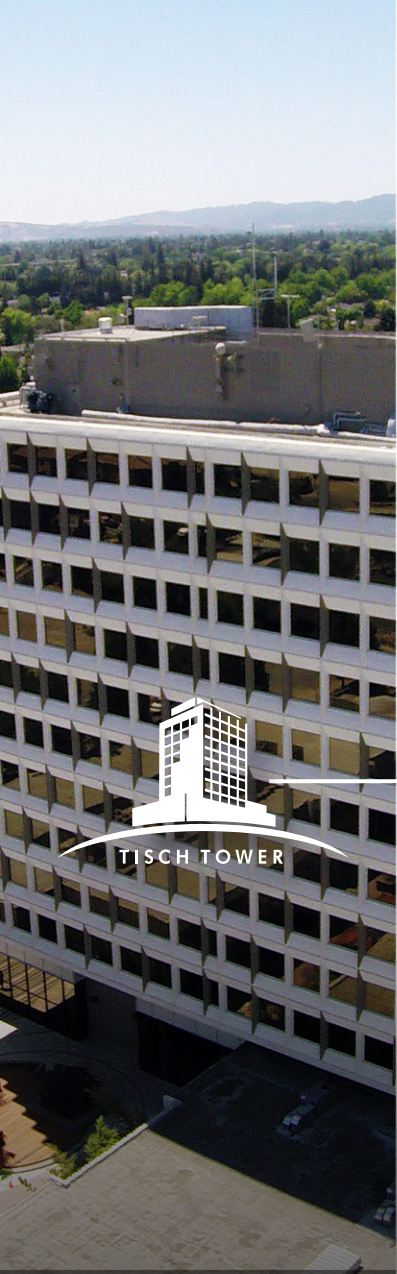
PROJECT AMENITIES

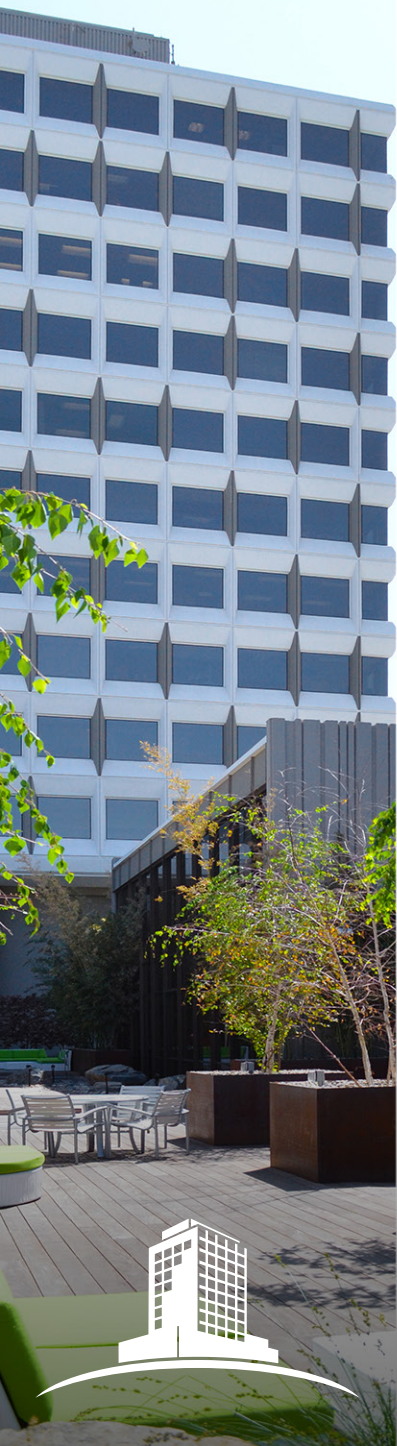


AERIAL MAP



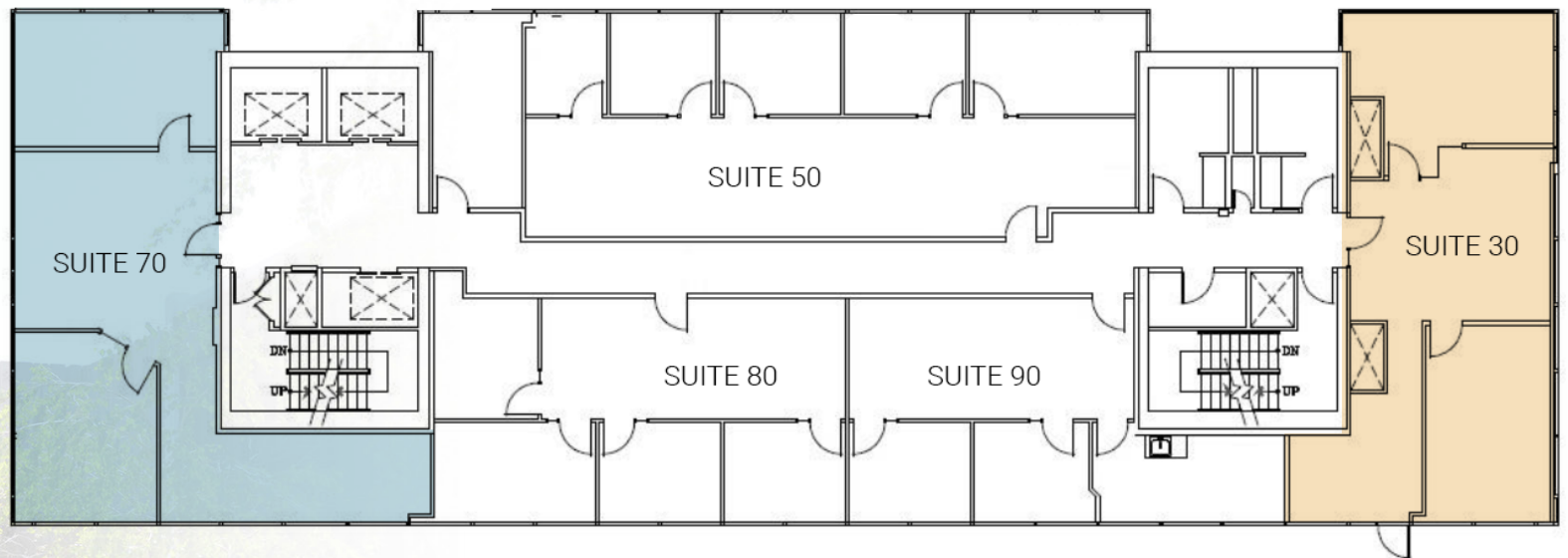
AMENITIES MAP





FLOORPLAN
SUITE 70
±1,511 RSF

FLOORPLAN
SUITE 30
±1,258 RSF



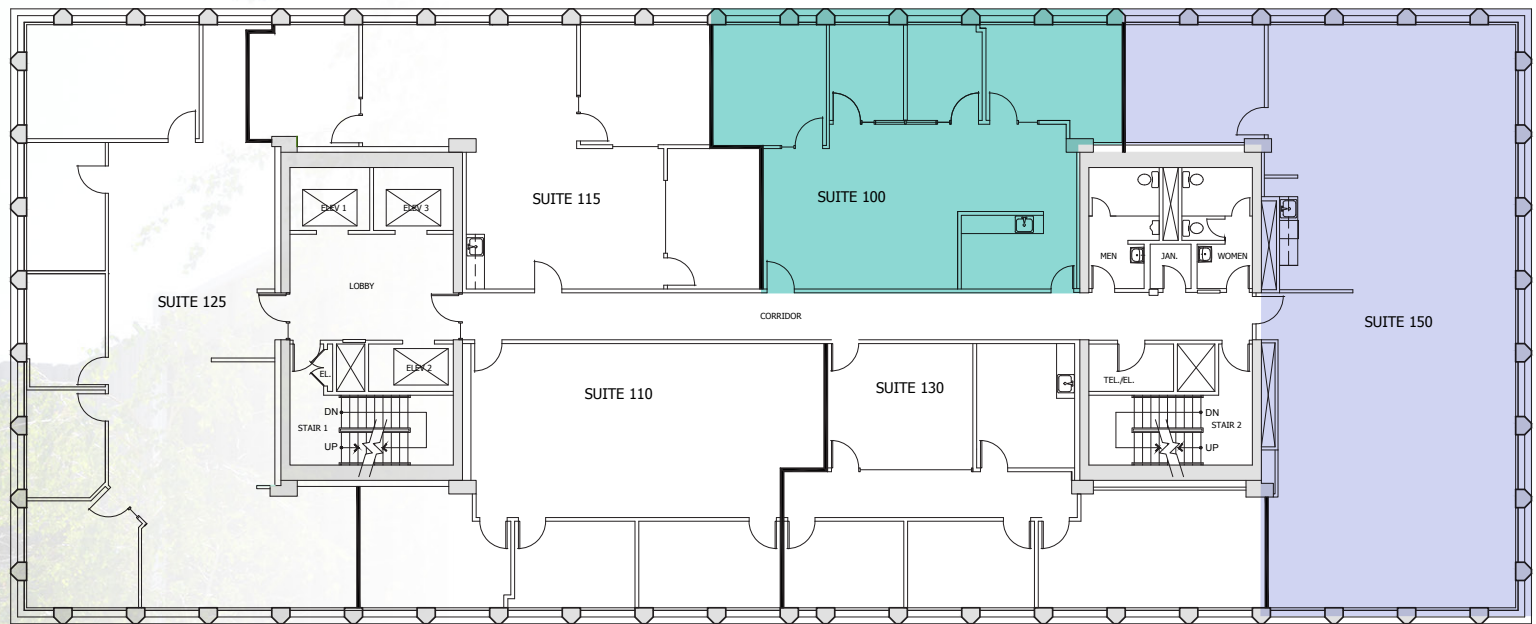
 Available Now
 Available Now



FLOORPLAN
SUITE 100
±1,454 RSF

FLOORPLAN
SUITE 150
±2,518 RSF

Can combine for ±3,972 rsf



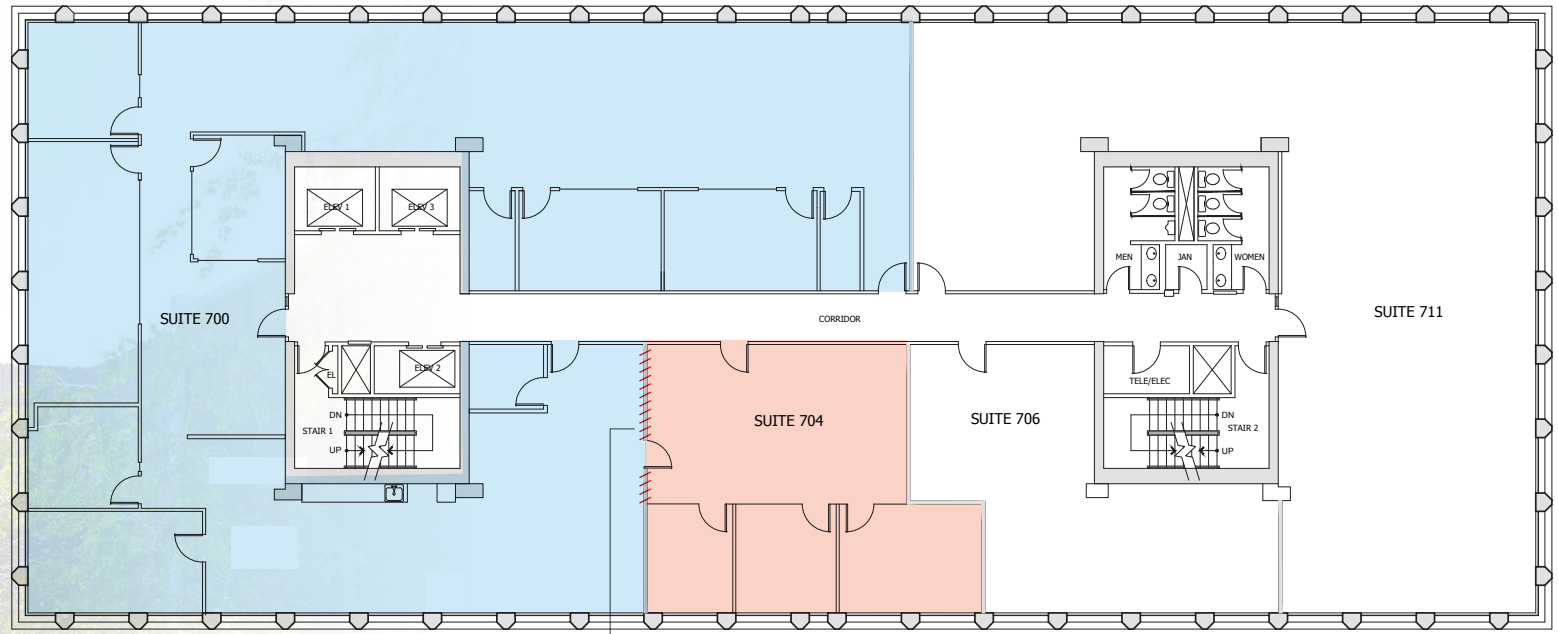
- Available 4/1/26
- Available Now



FLOORPLAN
SUITE 700
±5,523 RSF

FLOORPLAN
SUITE 704
±1,159 RSF

Can combine for ±6,682 rsf

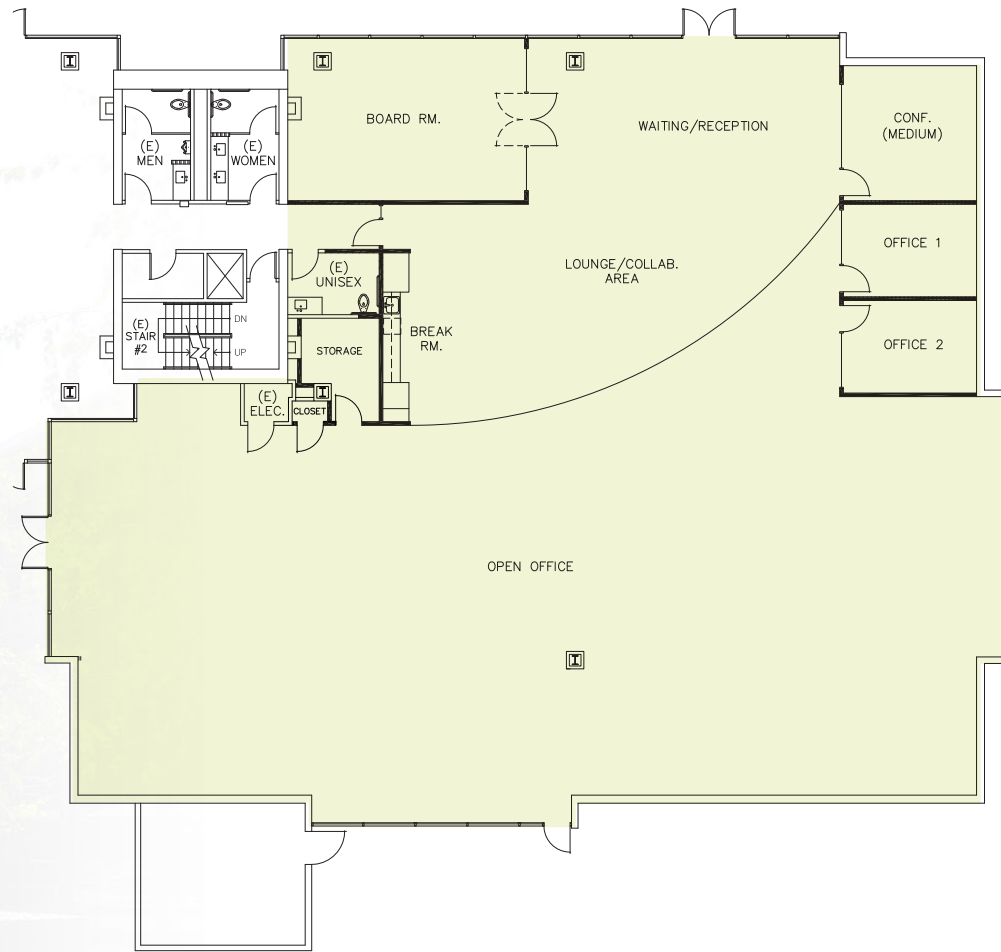


Potential wall to be removed

Available 3/15/26

Available 3/15/26

FLOORPLAN
PLAZA SOUTH FIRST FLOOR
±10,159 RSF

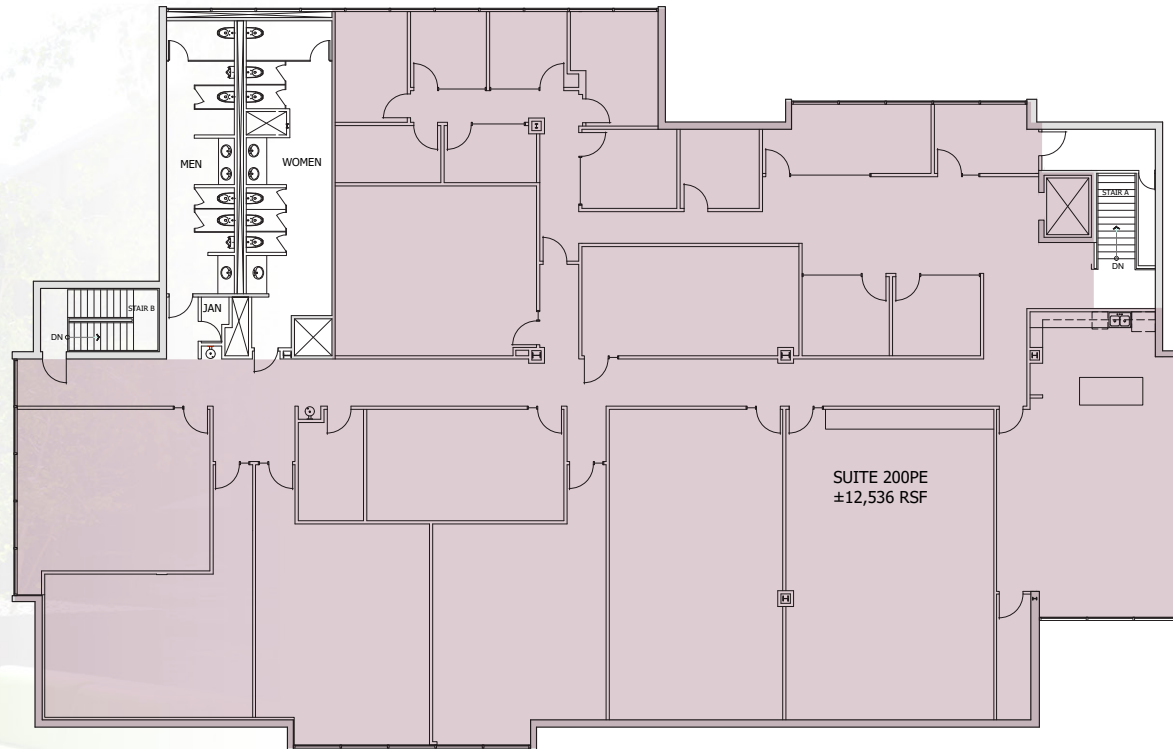


Proposal Hypothetical Market Ready Floorplan
Tenant Improvements to Suit!

Available Now

FLOORPLAN
PLAZA EAST SUITE 200
±12,536 RSF

- Prominent Santana Row location – adjacent to retail amenities
- Exterior entrance off plaza area
- Top building signage facing 280 freeway
- Customized tenant improvements
- Potential lab space for office/R&D type uses
- Elevator served



Available Q3/Q4 2026



Patty STEELE | Senior Managing Director • 408.982.8463
patty.steele@nrmk.com • CA RE License #00839635

Grant MEYLAN | Managing Director • 408.987.4153
grant.meylan@nrmk.com • CA RE License #02078953

Andrea BARTLINSKI | Brokerage Services Specialist • 408.982.8424
andrea.bartlinski@nrmk.com • CA RE License #01338254

3055 Olin Avenue, Suite 2200, San Jose, CA 95128 | The distributor of this communication is performing acts for which a real estate license is required. The information contained herein has been obtained from sources deemed reliable but has not been verified and no guarantee, warranty or representation, either express or implied, is made with respect to such information. Terms of sale or lease and availability are subject to change or withdrawal without notice. 8249694750 • 01/26



NEWMARK

the **Muller**
company

