

# OCEAN®80

SUITE 2B, FIRST FLOOR, 80 HOLDENHURST ROAD, BOURNEMOUTH, DORSET BH8 8AQ



## SUMMARY

- First floor office suite extending to approximately 1,427 sq ft
- 4 lifts
- Generous reception with impressive communal areas
- Open plan refurbished suite
- Coffee shop with internal and external seating
- Private members gym on the ground floor
- Excellent road communications
- Approximately 450m from Bournemouth's mainline railway station and coach station
- Approximately 1km from Bournemouth town centre
- VAT not currently applicable
- 2 car parking spaces





IN GOOD  
COMPANY...



## LOCATION

Ocean 80 occupies a prominent location in Lansdowne, the prime office district in Bournemouth.

**Bournemouth's transport hub**, including coach and railway station, is **approximately 450 metres distant** and provides regular services to **London Waterloo**. The building is also situated on a main bus route. **Access to the A338 is approximately 500 metres distant**, which provides links to the **A35** and **A31**. In the nearby vicinity there are leisure/retail amenities.

### Approximate distances from Ocean 80:

A338 Wessex Way	500m
Bournemouth Train Station	450m
Bournemouth Airport	5.2km
BH2 Leisure Complex	1.9km
Bournemouth Beach	1.4km
Bournemouth Town Centre	1.1km

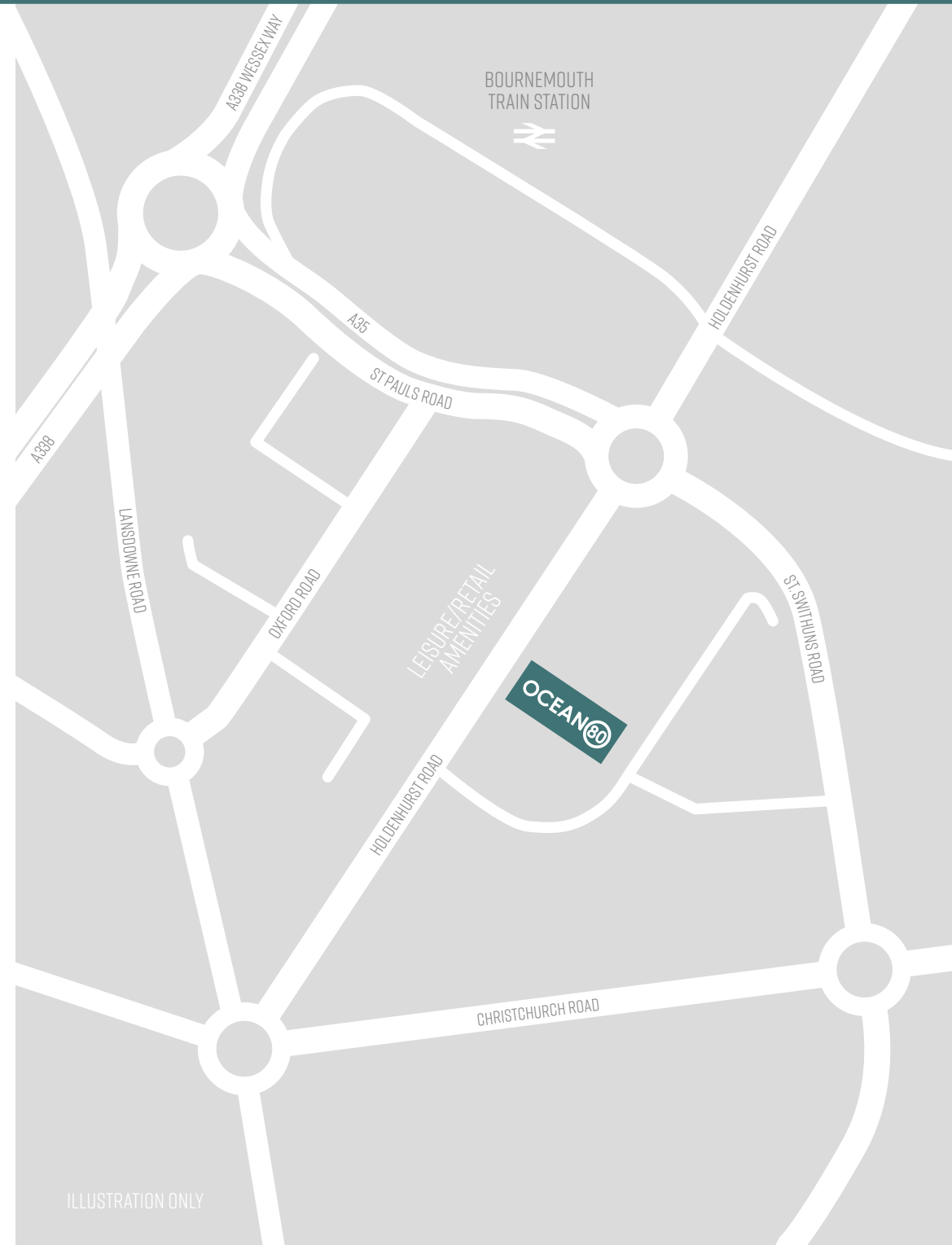


ILLUSTRATION ONLY



Isle of Purbeck

Brownsea Island

Poole Harbour

Sandbanks

Poole Bay

Bournemouth Pier

Bournemouth Beach

BH2

Town Center

A338  
Wessex Way

80

TESCO

ASDA

Bournemouth  
Railway Station

Bournemouth Travel  
interchange



## DESCRIPTION

Ocean 80 is a landmark 10 storey office building situated in a highly visible position fronting Holdenhurst Road.

There are impressive communal areas which include a welcoming receptionist with secure access to the building, a café offering a wide range of food and beverages and a private gym which tenants have the opportunity to join.

Access to the floors is by way of stairs and four 12 person passenger lifts and the accommodation is arranged around the central core.

The offices are open plan and have been refurbished to include the following specification:

- Suspended ceilings with inset LED lighting
- Air conditioning and fresh air system
- High quality finishes and redecoration throughout
- New carpet
- Car-parking spaces in a barrier controlled car-park
- Communal male, female and disabled cloakroom
- Electricity vehicle charging points



## FLOOR AREA

The suite extends to approximately 133 sq m (1,427 sq ft).

## CAR PARKING

The suite is allocated 2 car parking spaces.

## LEASE

The suite is available to let by way of a new full repairing and insuring lease for a negotiable term, incorporating upward only rent reviews.

## RENT

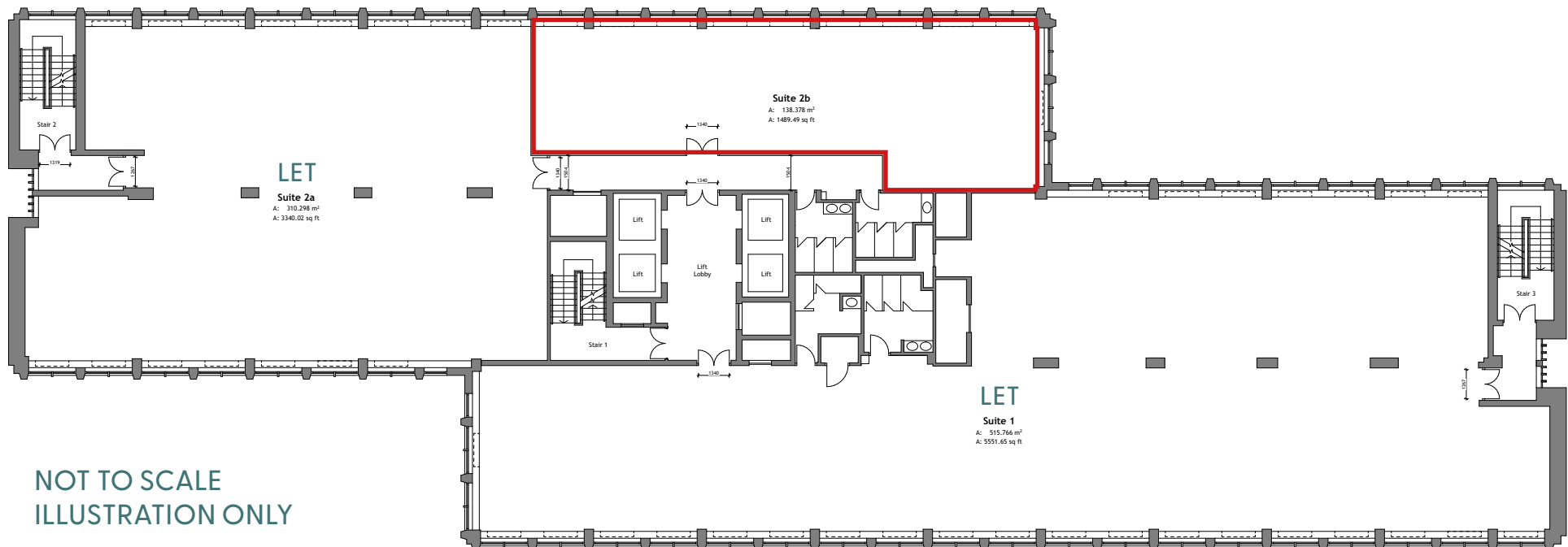
**£32,850 per annum** exclusive of business rates, service charge, insurance premium, common area utilities, electricity for the suite and all other outgoings.

## RATEABLE VALUE

To be assessed.

## EPC RATING

D - 85



# OCEAN<sup>80</sup>

SUITE 2B, FIRST FLOOR, 80 HOLDENHURST ROAD, BOURNEMOUTH, DORSET BH8 8AQ

## SERVICE CHARGE

A service charge is payable in respect of the upkeep, management and maintenance of the common parts within the building. Interested parties are advised to make further enquiries.

## LEGAL COSTS

Each party is to be responsible for their own legal costs incurred in the transaction.

The Code For Leasing Business Premises  
The Code for Leasing Business Premises in England and Wales strongly recommends you seek professional advice from a surveyor or solicitor before agreeing or signing a business tenancy/lease agreement. The Code is available [HERE](#).

## VIEWINGS

Strictly by prior appointment through the sole agents, **Goadsby**, through whom all negotiations must be conducted.



**James Edwards**

james.edwards@goadsby.com

07801 734797

These particulars are believed to be correct, but their accuracy is not guaranteed and they do not form an offer or contract. STRICTLY SUBJECT TO CONTRACT, ALL MEASUREMENTS APPROXIMATE. Agents note: At no time have we undertaken a structural survey and services have not been tested. Interested parties should satisfy themselves as necessary, to the structural integrity of the premises and condition/working order of services, plant or equipment.