



WASHINGTON ST. PARTNERS

**NOW AVAILABLE: MERCHANTS COMMONS**

**220 S. WARREN ST., SYRACUSE, NY**

**3,700+- SF OFFICE AVAILABLE**

**PENTHOUSE LEVEL OFFICE SETTING WITH ROOFTOP DECK, PRIVATE ELEVATOR LOBBY**



### *Property Features:*

1. Unique office space with PRIME LOCATION
2. Multiple Amenities Available
3. Part of Merchants Commons Complex
4. Access to an improved fitness/spa experience
5. Rooftop Deck and Outdoor Experience
6. Glass Front Offices

### *Location Description:*

Merchants Commons mixed use complex consisting of commercial office space and residential apartments, located in the heart of Downtown Syracuse.

### *Current Complex Tenants:*



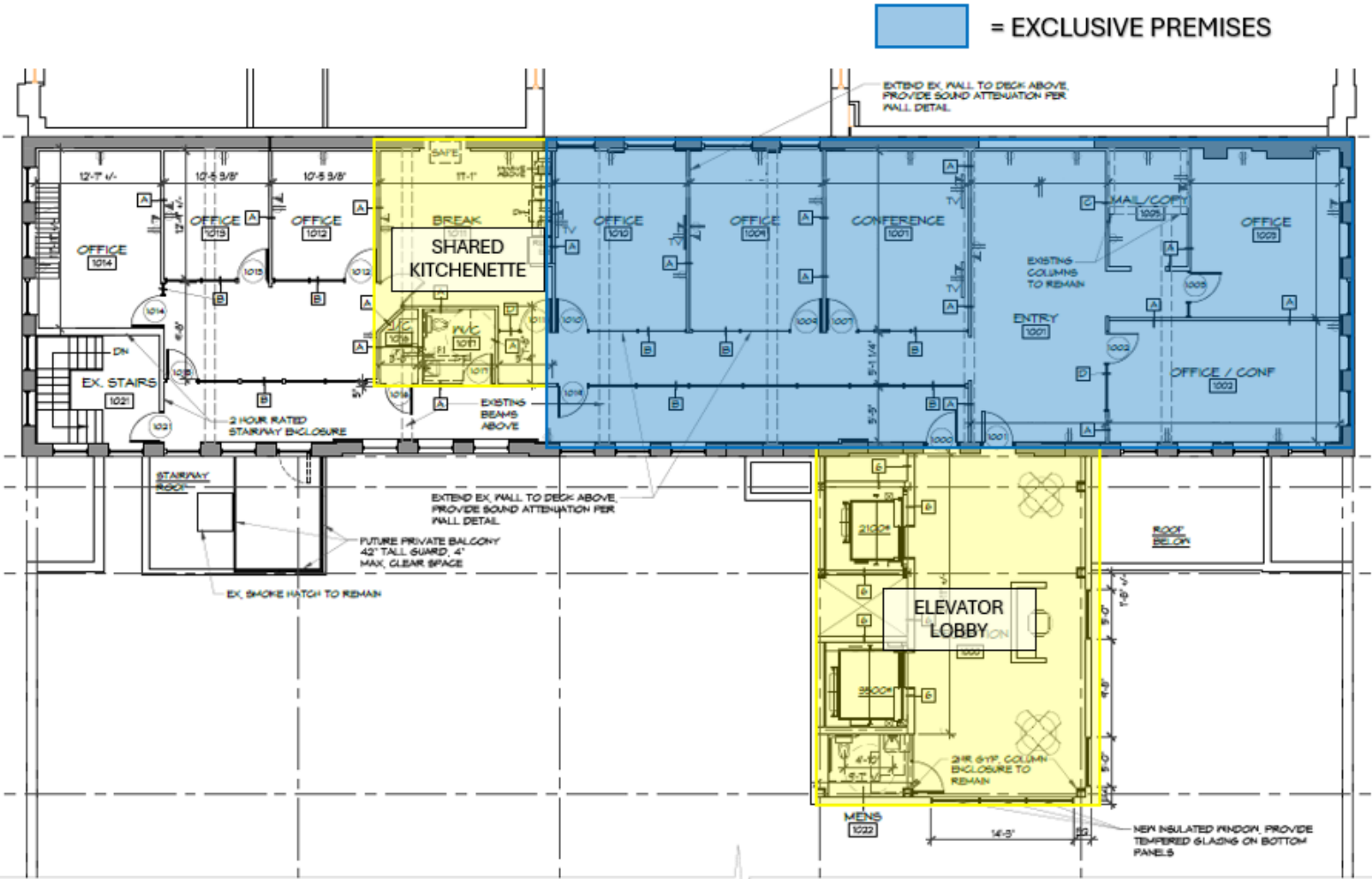
**FOR OTHER LEASING OPPORTUNITIES**  
[WashingtonStPartners.com](http://WashingtonStPartners.com)



**WASHINGTON ST. PARTNERS CORPORATE OFFICES**  
120 E. Washington Street, Syracuse, NY 13202  
PH 315-426-2624 [info@washingtonstpartners.com](mailto:info@washingtonstpartners.com)

NOW AVAILABLE: 3,700+- SF OFFICE

**MERCHANTS COMMONS**



FOR OTHER LEASING OPPORTUNITIES  
[WashingtonStPartners.com](http://WashingtonStPartners.com)



**WASHINGTON ST. PARTNERS CORPORATE OFFICES**  
120 E. Washington Street, Syracuse, NY 13202  
PH 315-426-2624 info@washingtonstpartners.com

NOW AVAILABLE: 3,700+- SF OFFICE

*MERCHANTS COMMONS*

---



---

FOR OTHER LEASING OPPORTUNITIES  
[WashingtonStPartners.com](http://WashingtonStPartners.com)



**WASHINGTON ST. PARTNERS CORPORATE OFFICES**  
120 E. Washington Street, Syracuse, NY 13202  
PH 315-426-2624 [info@washingtonstpartners.com](mailto:info@washingtonstpartners.com)