

# FLEX SPACE AVAILABLE FOR LEASE

940 Corporate Lane, Suite D  
Chesapeake, VA 23320  
(Greenbrier Commerce Park)



**RENTAL RATE: \$13.50 PER SQUARE FOOT**  
**(\$6,075.00 PER MONTH)**

*EXCLUSIVELY OFFERED BY:*

**BILL BRACKMAN**

**[bbrackman@riddleassociates.com](mailto:bbrackman@riddleassociates.com)**

**(757) 523-1900**

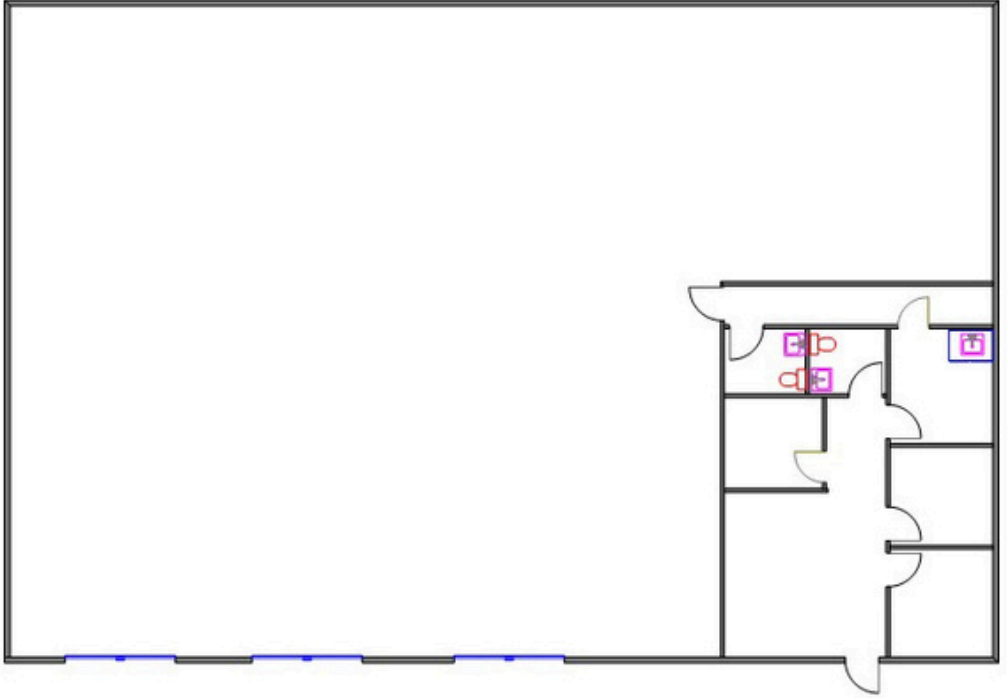
- Available in early 2026 (or potentially sooner)
- Industrial Gross
- Tenant Pays: Utilities, Janitorial and interior maintenance
- Landlord Pays: Real Estate Taxes, Casualty Insurance and Common Area Maintenance
- 5,400 Square Foot
- 850 SF Office & 4,550 SF Warehouse
- 3 Overhead Doors
- Convenient access to Greenbrier Parkway and I-64

The information presented in this marketing flyer is obtained from sources believed to be reliable, but is not warranted. This offer is subject to prior sale or lease, errors, omissions or withdrawal without notice.

**RIDDLE ASSOCIATES, INC.**

Commercial Real Estate

*"Real Estate Services Tailored to Your Needs"*



940 Corporate Ln, Suite D, Chesapeake, VA  
Approximately 5,400 Square Feet

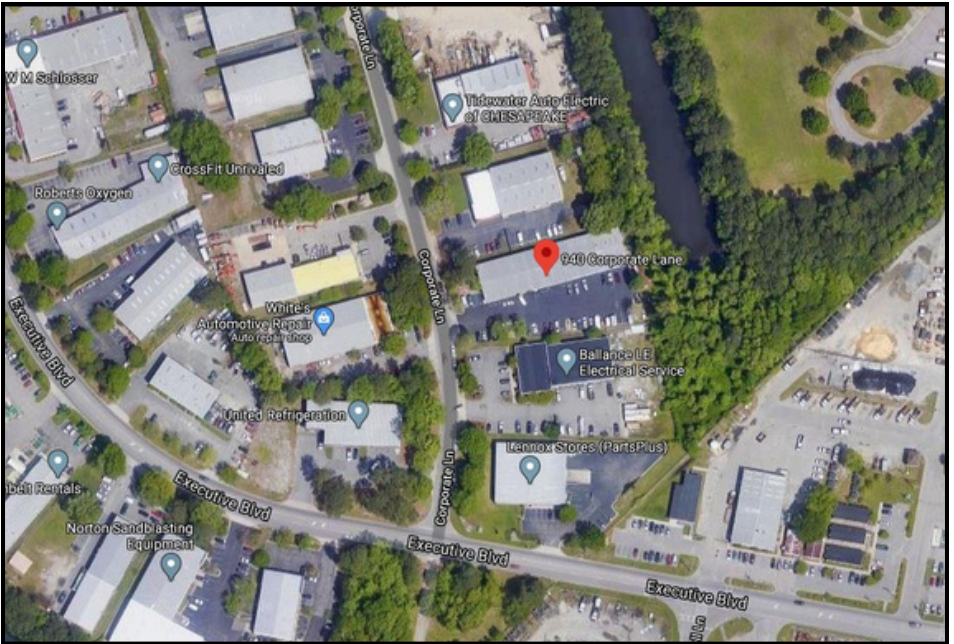
The information presented in this marketing flyer is obtained from sources believed to be reliable, but is not warranted. This offer is subject to prior sale or lease, errors, omissions or withdrawal without notice.

---

## **RIDDLE ASSOCIATES, INC.**

**Commercial Real Estate**

***"Real Estate Services Tailored to Your Needs"***



The information presented in this marketing flyer is obtained from sources believed to be reliable, but is not warranted. This offer is subject to prior sale or lease, errors, omissions or withdrawal without notice.

## **RIDDLE ASSOCIATES, INC.**

**Commercial Real Estate**

*"Real Estate Services Tailored to Your Needs"*