

Pop-ups and
Short-term
Leases
Welcome

FOR LEASE



METROPOLITAN PACIFIC
REAL ESTATE GROUP



212 Santa Monica Boulevard Santa Monica, CA

RETAIL/RESTAURANT SPACE BETWEEN THIRD STREET PROMENADE AND OCEAN

- 4,850 rsf available
- Costar Retail Location Score of 98
- Over 20,000 vehicles per day on Santa Monica Boulevard
- Steps from Third Street Promenade and the beach
- Third Street Promenade had 15.9 million pedestrian impressions in FY 2020/21
- Nearby city parking structures contain 6,149 spaces
- Fifty feet of glass frontage on Santa Monica Blvd.
- Glass accordion door leads to outdoor covered patio area
- Dense trade area with significant retail, office, and mixed-use, and increasing residential developments nearby
- 16' Ceiling Height

CONTACT

310 395 7300

METROPOLITAN PACIFIC

DRE#01395401

Gary Steinhardt

DRE# 02151907

gsteinhardt@metpac.com

John Warfel

DRE# 01184386

jwarfel@metpac.com

REPRESENTED BY METROPOLITAN COMMERCIAL REAL ESTATE SERVICES

Please do not disturb existing tenant. Shown by appointment only.

**Fifty feet of
frontage on
Santa Monica
Blvd.**

**Glass accordion
door**

**Outdoor covered
patio area**



CONTACT

310 395 7300

METROPOLITAN PACIFIC

DRE#01395401

Gary Steinhardt

DRE# 02151907

gsteinhardt@metpac.com

John Warfel

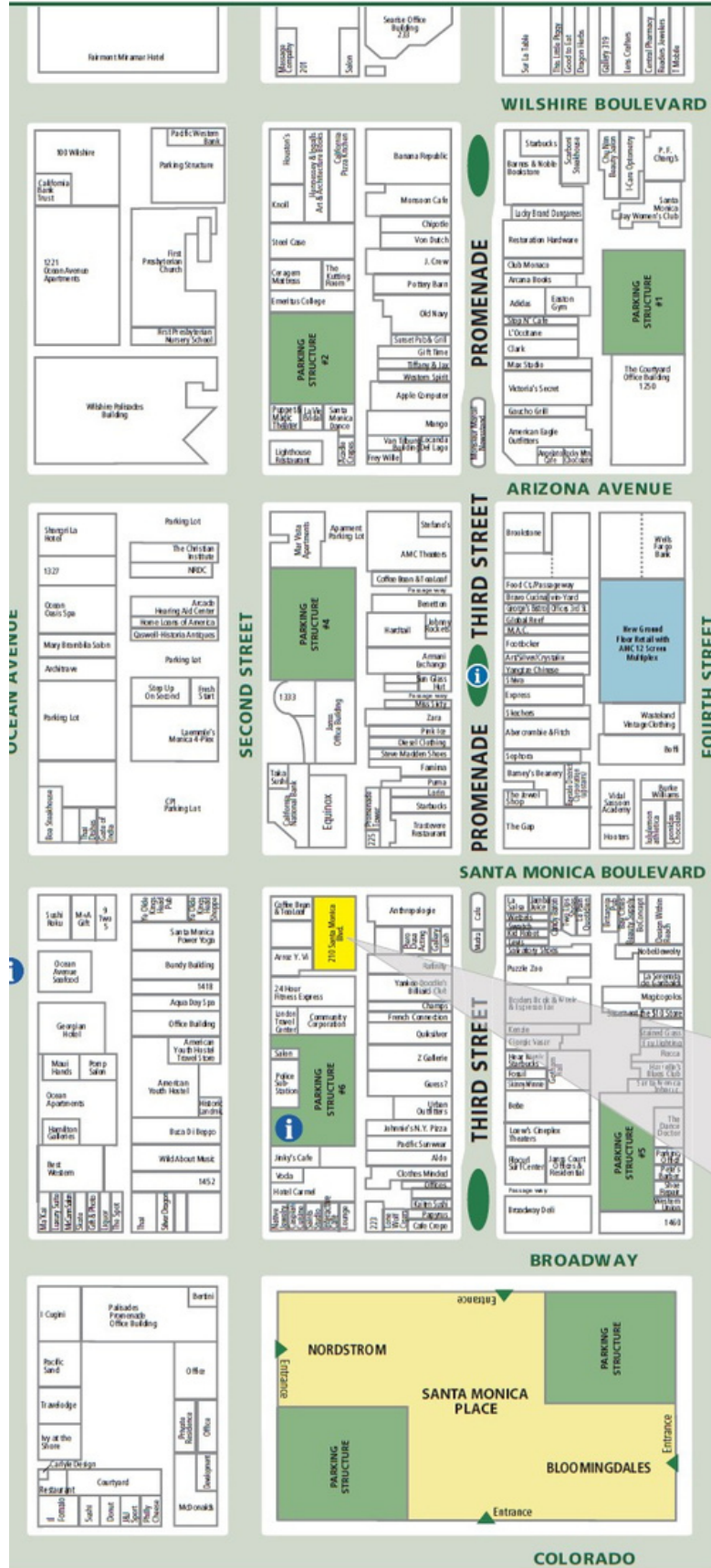
DRE# 01184386

jwarfel@metpac.com



Steps from Third Street Promenade and the beach

Costar Retail Location Score of 98

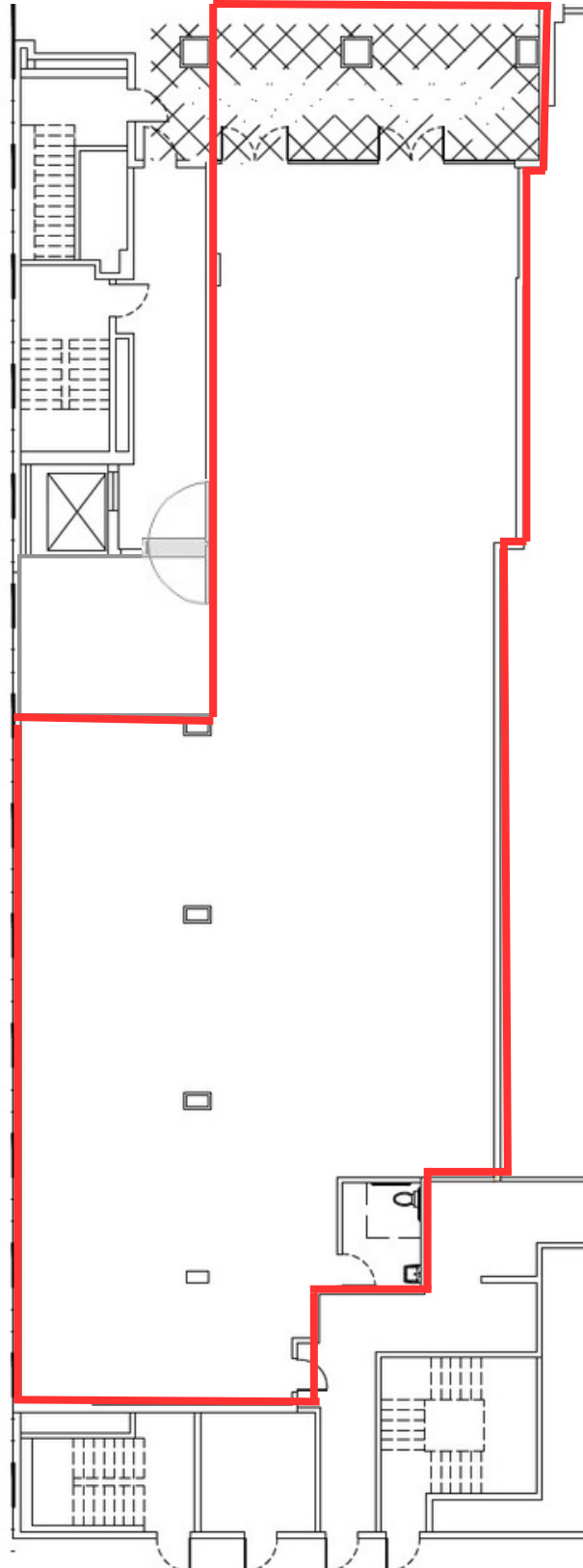


212
Santa Monica Blvd.

MP METROPOLITAN PACIFIC
REAL ESTATE GROUP

CONTACT
310 395 7300
METROPOLITAN PACIFIC
 DRE#01395401
Gary Steinhardt
 DRE# 02151907
 gsteinhardt@metpac.com
John Warfel
 DRE# 01184386
 jwarfel@metpac.com

Santa Monica Boulevard



Functional layout

Loading dock

High Ceilings



CONTACT

310 395 7300

METROPOLITAN PACIFIC

DRE#01395401

Gary Steinhardt

DRE# 02151907

gsteinhardt@metpac.com

John Warfel

DRE# 01184386

jwarfel@metpac.com

REPRESENTED BY METROPOLITAN COMMERCIAL REAL ESTATE SERVICES

Please do not disturb existing tenant. Shown by appointment only.