



2461 SOUTH CLARK

AN OFFICE SPACE THAT SPEAKS VOLUMES

TOWNHALL AT CRYSTAL & CLARK

Be the first to experience the new
top-of-the-building town hall and
repositioned 2461 South Clark

Great views, high ceilings with an
interconnecting stairwell

Building repositioning & Town Hall
NEWLY DELIVERED

CRYSTALANDCLARK.COM

[VIEW VIDEO](#)

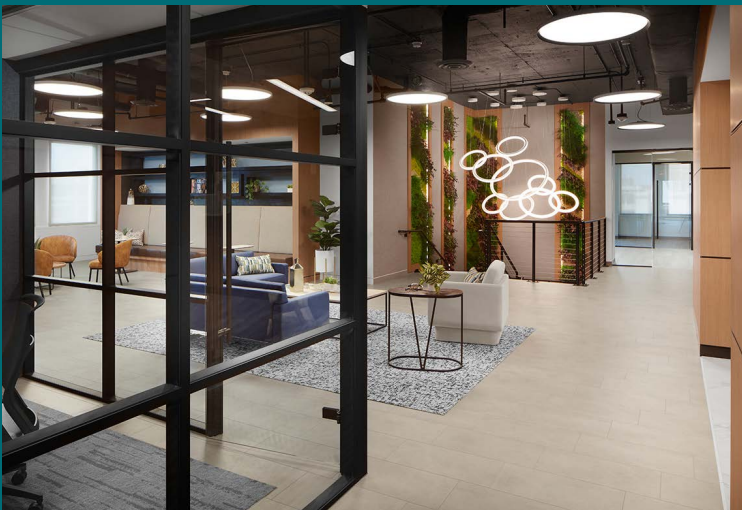
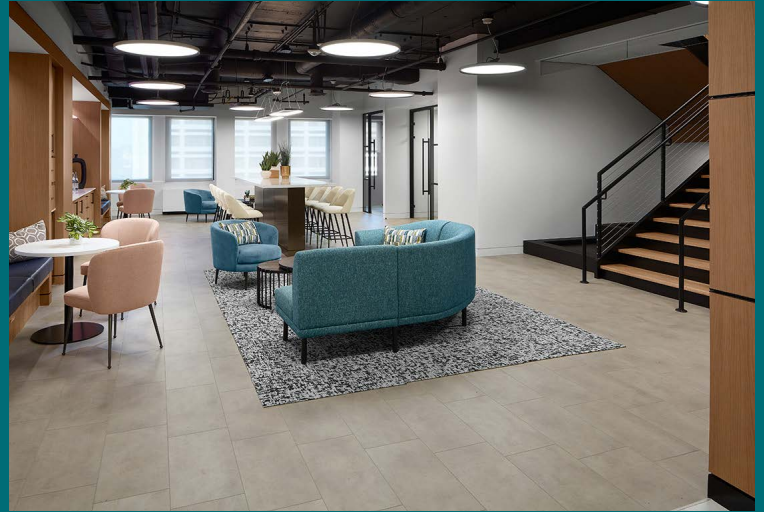




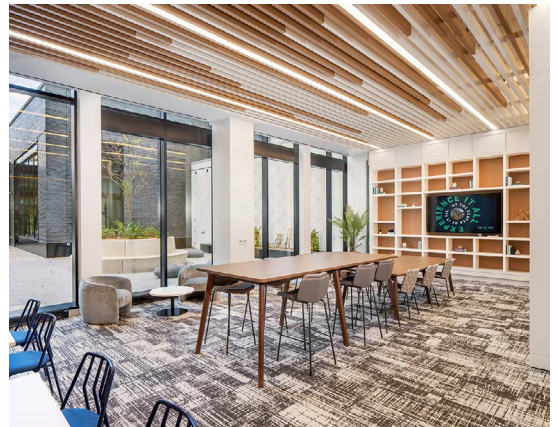
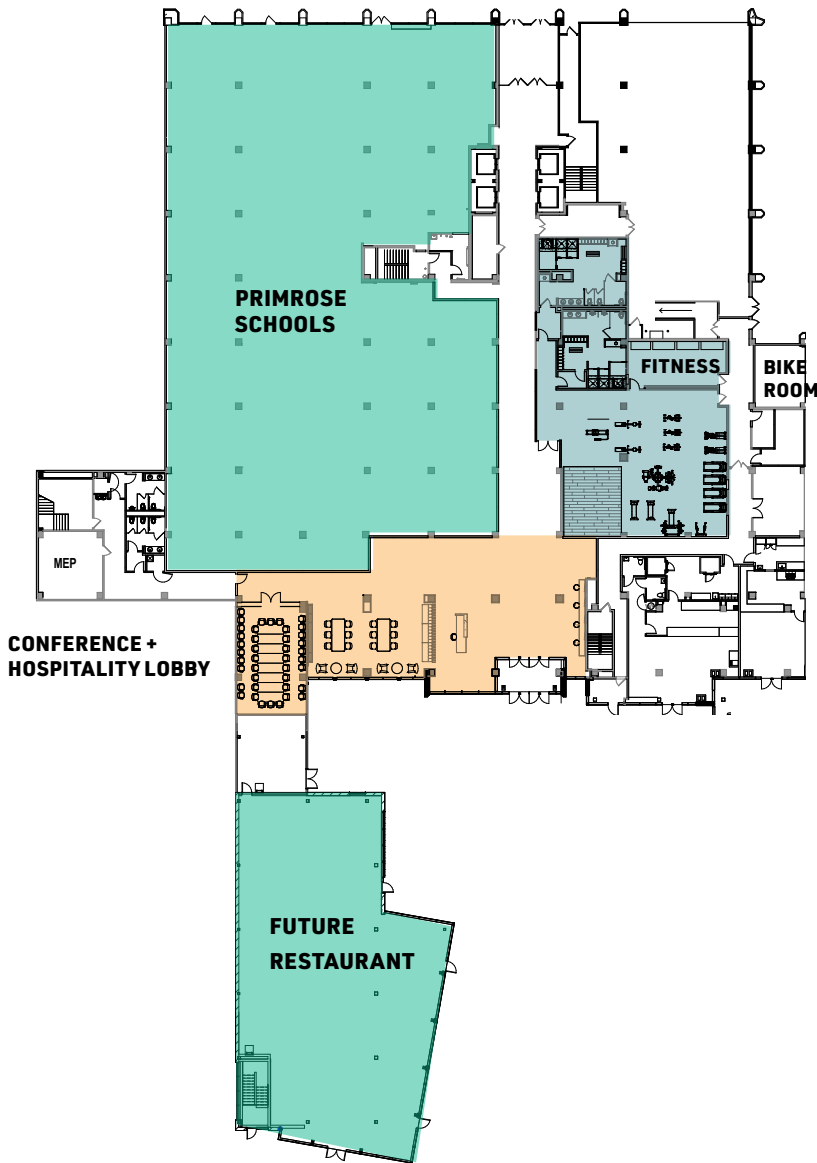
CRYSTAL & CLARK

2461 S. Clark Street, Arlington, VA

Town hall at Crystal & Clark is an environment that offers collaborative “think tank” areas & solo workstations, plus inspiring office suites of all sizes. With a variety of connected conveniences, work/life balance has officially been restored.



2461 S CLARK



Gary Cook
Senior Vice President
703.284.3379
gcook@lpc.com

Stoddie Nibley
Senior Vice President
703.284.5884
snibley@lpc.com

Neil Alt
Senior Vice President
703.284.5868
nalt@lpc.com

Lincoln



CRYSTAL & CLARK

2461 S. Clark Street, Arlington, VA

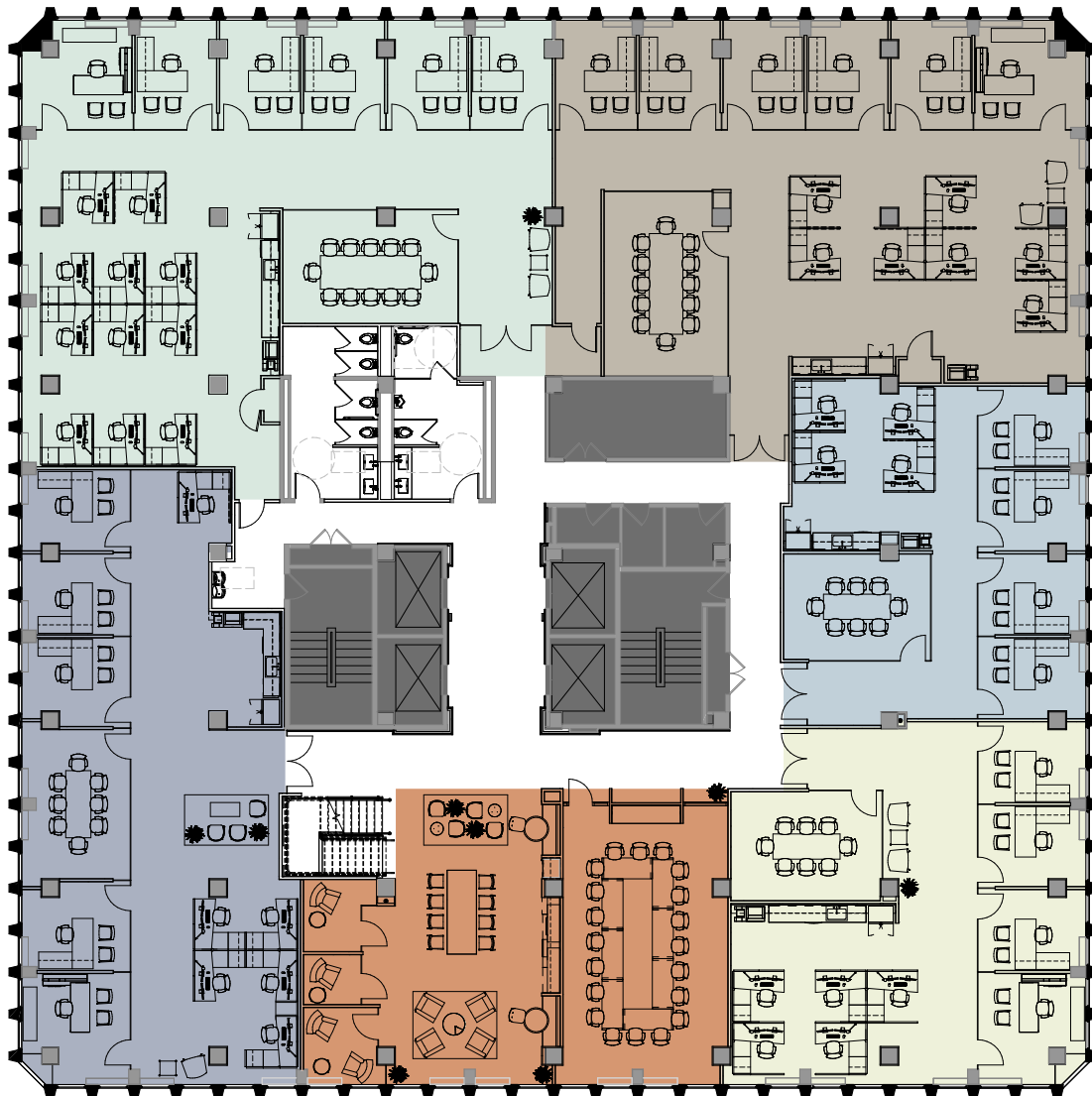
11TH FLOOR SPEC SUITE & CONCEPT PLAN



SPEC SUITE 1100
4,743 SF



SPEC SUITE 1120
4,569 SF



SPEC SUITE 1135
2,375 SF



FURNISHED SPEC SUITE 1150
2,924 SF



AMENITY AREA

SPEC SUITE 1165
3,685 SF





CRYSTAL & CLARK

2461 S. Clark Street, Arlington, VA

12TH FLOOR SPEC SUITE & CONCEPT PLAN



VIRTUAL TOUR

SPEC SUITE 1280

2,504 SF



VIRTUAL TOUR

SPEC SUITE 1220

2,944 SF



VIRTUAL TOUR

AMENITY AREA

SPEC SUITE 1250

3,745 SF



**2450 Crystal Drive / 2461 S. Clark Street
Arlington, VA 22202**

For Leasing Information Contact:

Gary Cook

GCook@lpc.com

703.284.3379

Stoddie Nibley

SNibley@lpc.com

703.284.5884

Neil Alt

NAlt@lpc.com

703.284.5868

NEWLY DELIVERED

CRYSTALANDCLARK.COM



MRP | REALTY

Lincoln