

WAREHOUSE | For Sublease

14801
WILLARD ROAD
CHANTILLY, VA 20151



11,836 RSF SUBLEASE SPACE AVAILABLE

BUILDING HIGHLIGHTS



Size:
11,836 RSF



Asking Rate:
Negotiable



Lease Expiration Date:
March 31, 2032



Parking:
1.8/1,000

SPACE HIGHLIGHTS

- + 19' - 24' Clear Warehouse Height
- + 40' x 42' Column Spacing
- + 1 Dock
- + 1 Ramped Drive in
- + 2,000 SF of Office Space

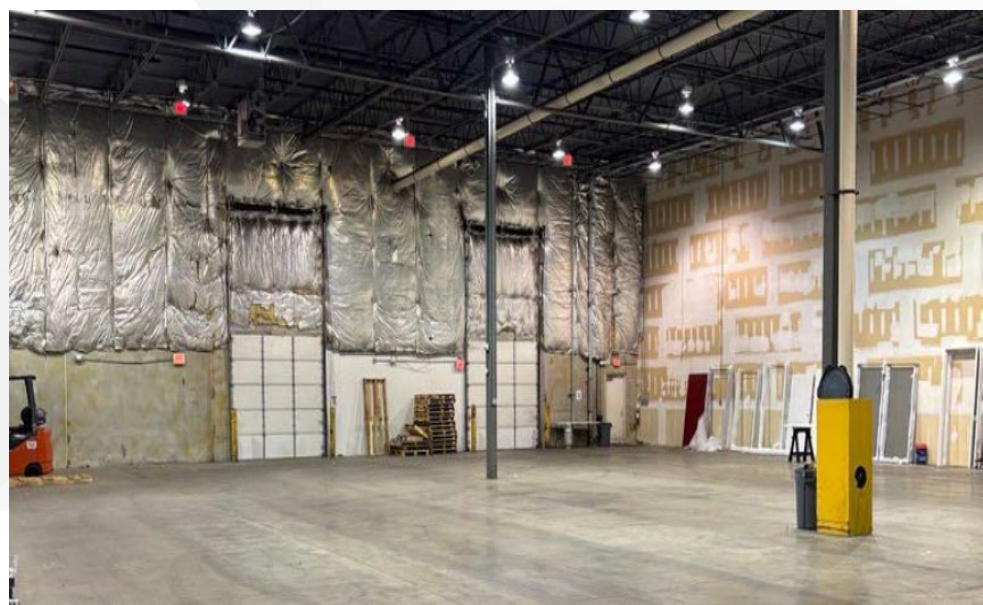
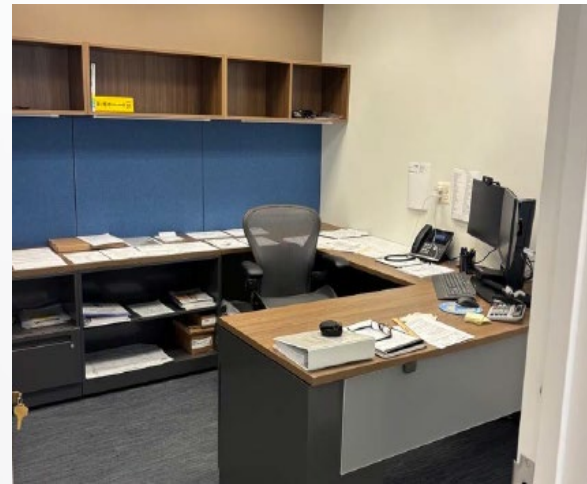
CONTACT INFORMATION

DAVID HARDCASTLE
202-471-3008
david.hardcastle@nrmk.com

GARY CUADROS
703-626-5589
gary.cuadros@nrmk.com

NEWMARK

SPACE PHOTOS



CONTACT INFORMATION

DAVID HARDCASTLE
202-471-3008
david.hardcastle@nrmk.com

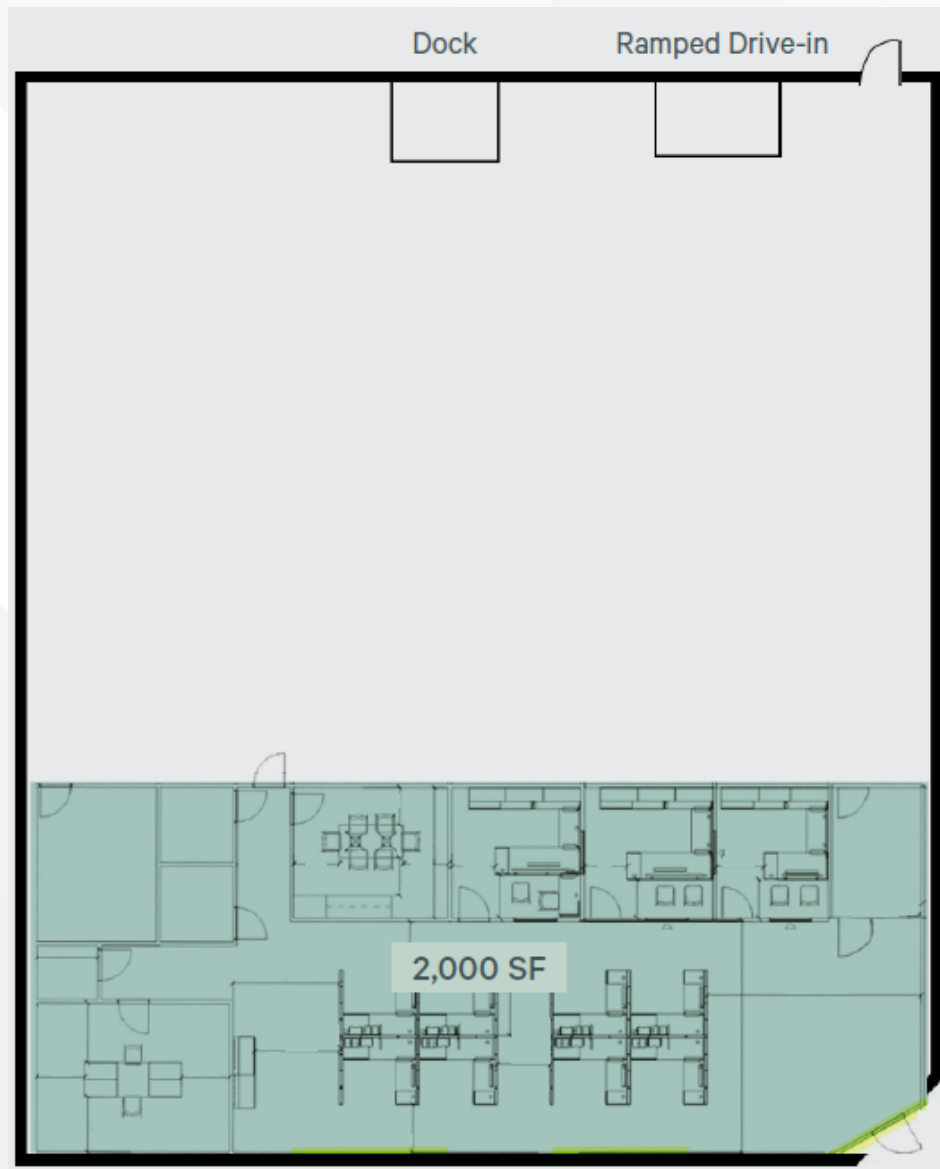
GARY CUADROS
703-626-5589
gary.cuadros@nrmk.com

NEWMARK

FLOOR PLAN

Suite - 11,836 RSF

- Open bull pen area (1,500 - 2,000 RSF)
- (4) Offices
- (1) Breakroom
- (1) IT/Storage Closet
- Changing Room



CONTACT INFORMATION

DAVID HARDCASTLE
202-471-3008
david.hardcastle@nrmk.com

GARY CUADROS
703-626-5589
gary.cuadros@nrmk.com

NEWMARK

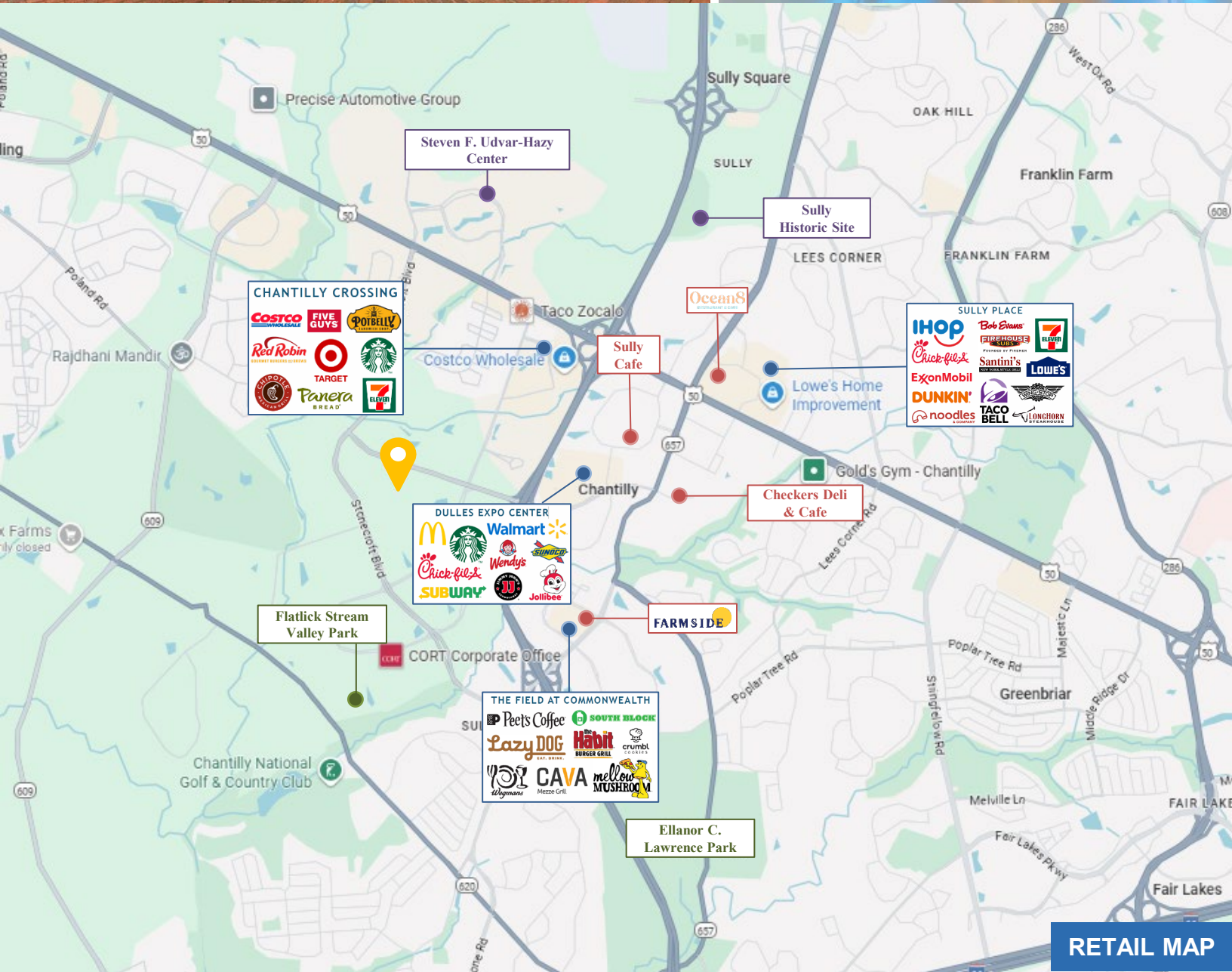
THE NEIGHBORHOOD



City Center



Smithsonian Steven F. Udvar-Hazy Center



RETAIL MAP

CONTACT INFORMATION

DAVID HARDCASTLE
 202-471-3008
 david.hardcastle@nrmk.com

GARY CUADROS
 703-626-5589
 gary.cuadros@nrmk.com

