

FOR LEASE

864± Sq. Ft. Office / Retail Space



91 W. Main Street Suite C, Woodland, CA

Located in well established retail complex
2 Large rooms with private offices
Separated by a wall, could be divided into 2 separate suites
Private parking lot
PG&E, water/sewer and garbage included in rent
Monument Signage

Lease Rate: \$1,253.00/Month

SALLING PROPERTIES INC.

DRE No. 02201437

REAL ESTATE SALES, LEASING & PROPERTY MANAGEMENT

20 N. East Street, Suite 101, Woodland, CA 95776

Phone: (530) 666-5485 Website: www.Sheffield-RealEstate.com

E-Mail: sallingproperties@kathysallingrealtor.com

The information contained herein has been obtained from sources we deem reliable. We cannot, however, assume responsibility for its accuracy.

Listing Agent: **Bryan Sheffield, Agent**
CalBRE: **02065645**
Phone: **(530) 219-0281**
E-Mail: **bsheffield100@gmail.com**

864± Sq. Ft. Office / Retail Space

91 W. Main Street, Suite C • Woodland, CA



SALLING PROPERTIES INC.

DRE No. 02201437

REAL ESTATE SALES, LEASING & PROPERTY MANAGEMENT

20 N. East Street, Suite 101, Woodland, CA 95776

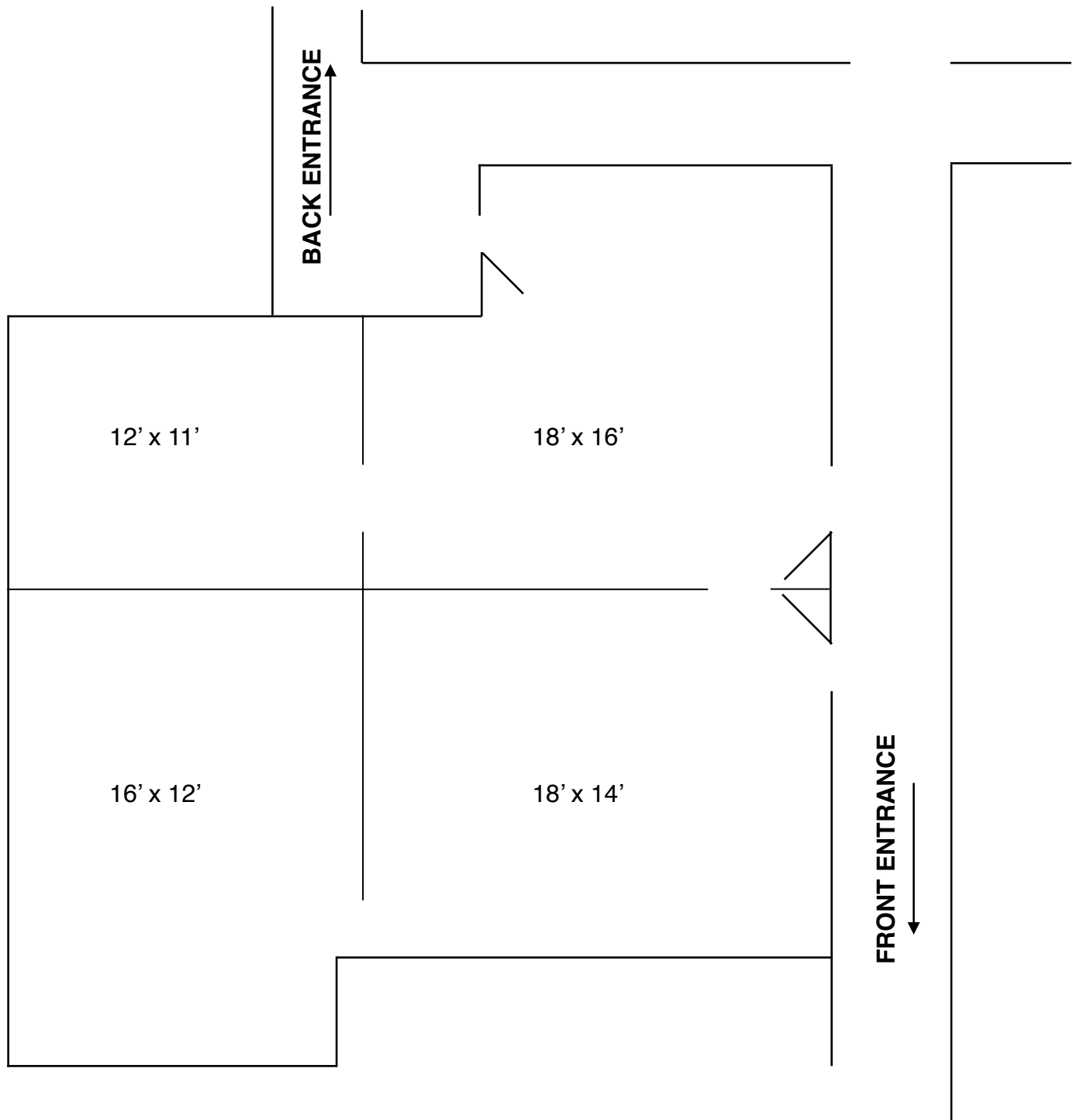
Phone: (530) 666-5485 Website: www.Sheffield-RealEstate.com

E-Mail: sallingproperties@kathysallingrealtor.com

The information contained herein has been obtained from sources we deem reliable. We cannot, however, assume responsibility for its accuracy.

Listing Agent: **Bryan Sheffield, Agent**
CalBRE: **02065645**
Phone: **(530) 219-0281**
E-Mail: **bsheffield100@gmail.com**

864± Sq. Ft. Office / Retail Space
91 W. Main Street, Suite C • Woodland, CA



*Drawing Not To Scale

SALLING PROPERTIES INC.

DRE No. 02201437

REAL ESTATE SALES, LEASING & PROPERTY MANAGEMENT

20 N. East Street, Suite 101, Woodland, CA 95776

Phone: (530) 666-5485 Website: www.Sheffield-RealEstate.com

E-Mail: sallingproperties@kathysallingrealtor.com

The information contained herein has been obtained from sources we deem reliable. We cannot, however, assume responsibility for its accuracy.

Listing Agent: **Bryan Sheffield, Agent**
CalBRE: **02065645**
Phone: **(530) 219-0281**
E-Mail: **bsheffield100@gmail.com**