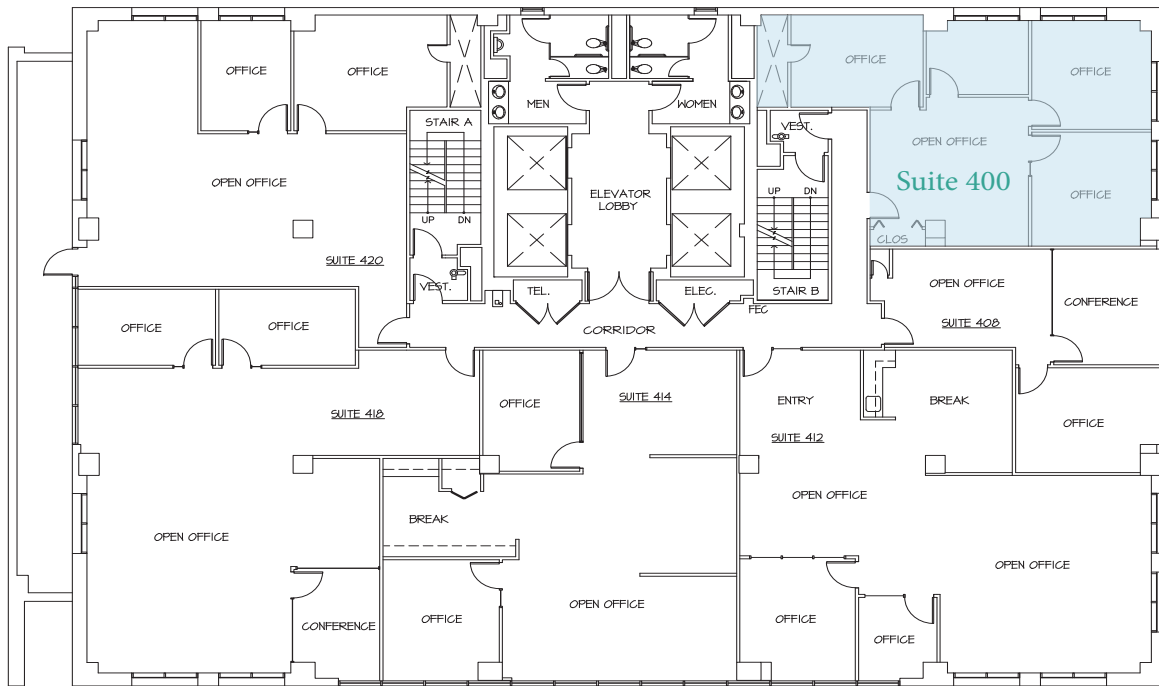


SUITE 400

1,152 SF

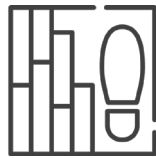
Available 8/1/2025

[Click Here for Virtual Tour](#) 



New Montgomery Street

Mission Street



Open Area



3 Private Offices



1 Conference Room

Contact:

Steven A. Anderson
 Managing Director
 +1 415 395 7265
 steve.anderson@jll.com
 RE License #: 00869389

Tom Doupe
 Senior Vice President
 +1 415 395 4933
 tom.doupe@jll.com
 RE License #: 01921218

Teva Myatt
 Associate
 +1 415 395 7290
 teva.myatt@jll.com
 RE License #: 02198058