



5555 S Inglewood Blvd

5555 S Inglewood Blvd, Culver City, CA 90230

CBRE



Mark Landver

CBRE

2000 Avenue Of The Stars, Suite 800, Los Angeles, CA 90067

mark.landver@cbre.com

(310) 550-2588



5555 S Inglewood Blvd

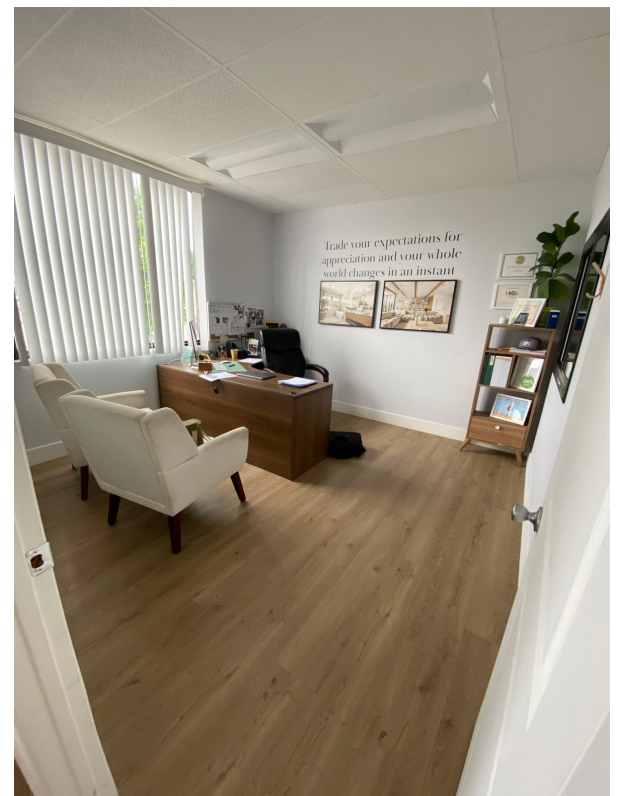
Upon Request

Playa Vista Boutique Office Building with Parking!...

- Street view suite with lots of light and updated offices. See pictures!



Rental Rate:	Upon Request
Property Type:	Office
Property Subtype:	Medical
Building Class:	C
Rentable Building Area:	6,365 SF
Year Built:	1983
Walk Score ®:	76 (Very Walkable)
Transit Score ®:	52 (Good Transit)
Rental Rate Mo:	Upon Request



2nd Floor Ste 202

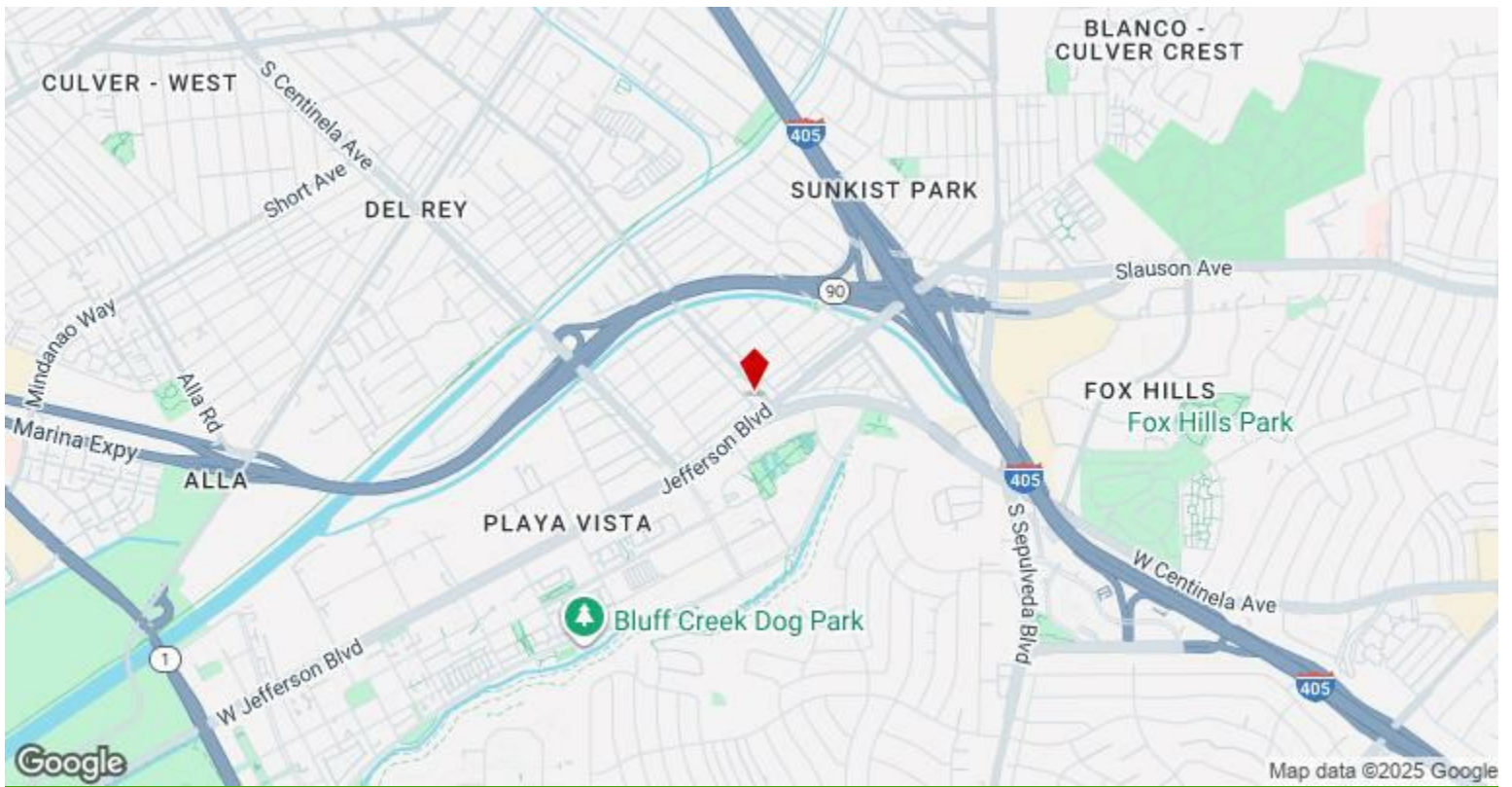
1

Space Available	1,050 SF
Rental Rate	Upon Request
Date Available	Now
Service Type	TBD
Built Out As	Standard Office
Space Type	Relet
Space Use	Office/Medical
Lease Term	Negotiable



Major Tenant Information

Tenant	SF Occupied	Lease Expired
Bob's Cleaning Service	-	
Cyril Financial Group Inc	-	
Melvin Shimizu Cpa	-	
Memo & Co Landscapes	-	
Metropolatian Cleaning Pros	-	
Smoking Tire, Llc, The	-	



5555 S Inglewood Blvd, Culver City, CA 90230

Playa Vista Boutique Office Building with Parking!