

FOR LEASE

68,290 Square Feet—DIVISIBLE

Retail / Showroom / Warehouse / R&D / Office

7157 Front Beach Road, Panama City Beach, Florida 32408



Location: 7157 Front Beach Road
Panama City Beach, FL 32408

0.66 Mile to the Main Gate at
Naval Support Activity Panama City

Size: 68,290 Total Heated & Cooled Sq. Ft.
On the ground floor
Plus 9,306 SF 2nd Floor (office,
storage, and apartment)
+ 6,600 Fenced Canopy

Will subdivide as small as +/-19,000 Sq. Ft.

Height: 16' Eave-height

Loading: #2, 8'W x 10'H Dock-Height
#2, 12'W x 14'H Grade Doors
#1, 10'W x 12'H Grade Door

Power: 3-Phase, 400 and 600 Amps

Zoning: C-3, General Commercial
Bay County

Lease Rate: \$12.00 NNN Per Sq. Ft.

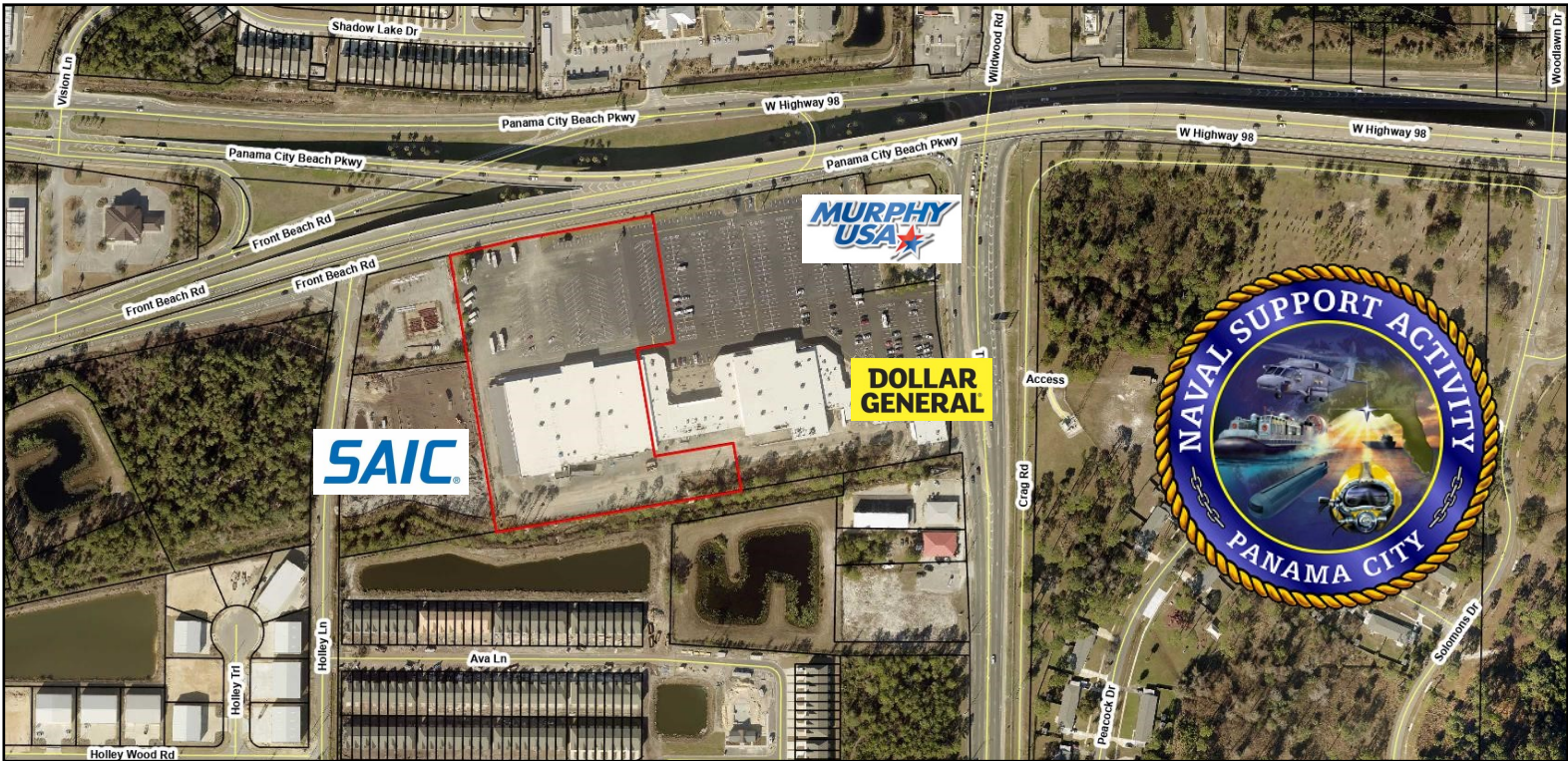


Chris McCall, SIOR
Senior Director/Partner
850.814.9889
Chris1@CountsRealEstate.com

www.CountsCommercial.com

Carl Allen, CCIM
Senior Director/Partner
850.960.8808
Carl@CountsRealEstate.com





Chris McCall
850.814.9889



INFORMATION IS BELIEVED TO BE ACCURATE BUT IS NOT WARRANTED OR GUARANTEED AND SHOULD BE INDEPENDANTLY VERIFIED.



Sep 2022 See more dates



www.CountsCommercial.com

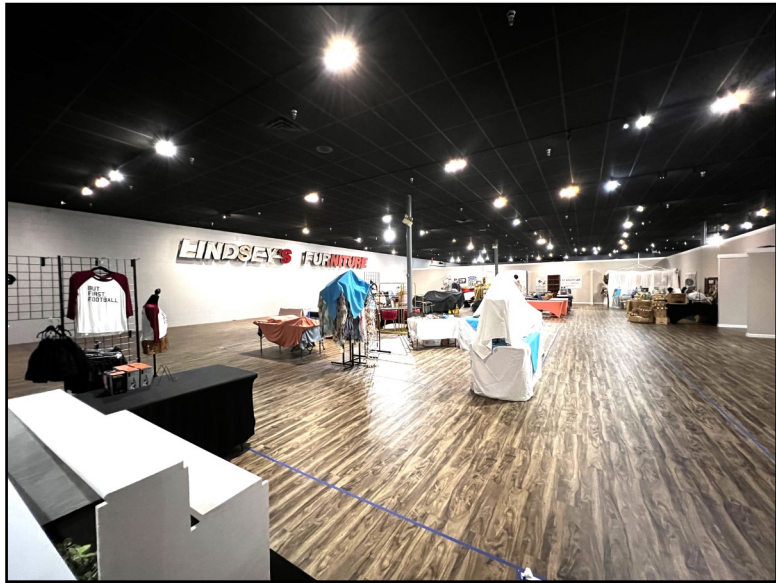
Chris McCall 850.814.9889

INFORMATION IS BELIEVED TO BE ACCURATE BUT IS NOT WARRANTED OR GUARANTEED AND SHOULD BE INDEPENDANTLY VERIFIED.

Google Street View

Sep 2022







Chris McCall, SIOR

Counts Real Estate Group - *Commercial Division*
Senior Director | Partner



Phone: (850) 249-3623
Cellular: (850) 814-9889
E-Mail: Chris1@CountsRealEstate.com
Web Site: www.McCallCommercial.com

For 26 years, Chris McCall has been a leader in Northwest Florida commercial real estate. Chris has set the bar in every facet of commercial real estate brokerage and advisory services. He specializes in Investment Sales, Representation Services, Leasing and Development Services related to office, retail, industrial, multi-family and land. Chris has a wealth of experience and a vast knowledge of the commercial real estate markets in northwest Florida. McCall is consistently a top producer in commercial real estate sales and lease transactions northwest Florida. *Experience Counts!*

Chris is a graduate of Florida State University where he double-majored in Real Estate and Finance. FSU has one of the premier real estate programs in the country. He also worked with Cushman & Wakefield’s prestigious Executive Development Program and later the Industrial Services Group in the Miami office where he honed his skills in Brokerage, Market Analysis, Financial Analysis and Lease Negotiations, and Corporate Advisory Services. Mr. McCall’s vast experience, formal real estate education, and multi-faceted expertise provides his clients with the ability to maximize the value of real estate transactions and decisions.

Chris and his wife Michelle of 22 years have two incredible daughters, Alex (21) who will graduate from Florida State this year and then attend law school and Elle (19) attending the U.S. Naval Academy. Chris is active with numerous civic activities including Economic Development Alliance, Leadership Bay Program, the United Way, March of Dimes and several local economic development groups.

Mr. McCall has been involved with significant transactions over his career in Northwest and South Florida. Some of his past clients include:

- | | | |
|-----------------------------------|----------------------------------|------------------------------------|
| <i>Synovus Bank</i> | <i>American Freightways</i> | <i>L-3 Communications</i> |
| <i>Seahaven Development</i> | <i>Ingersoll Rand / Trane</i> | <i>Sprint / Nextel</i> |
| <i>Honeywell International</i> | <i>Hellman International</i> | <i>The St. Joe Company</i> |
| <i>Kemper Insurance</i> | <i>Gildan Activewear</i> | <i>Tropical Shipping</i> |
| <i>UPS Properties</i> | <i>RetailSouth Development</i> | <i>Hancock Bank</i> |
| <i>Ford Motor Land Services</i> | <i>AT&T / BellSouth</i> | <i>Breland Companies</i> |
| <i>Rally Manufacturing</i> | <i>LandAmerica</i> | <i>Collins Goodman Development</i> |
| <i>Locally Global Investments</i> | <i>Seneca Industrial Park</i> | <i>Wachovia Securities</i> |
| <i>EOLA Capital</i> | <i>CBL</i> | <i>State of Florida</i> |
| <i>BAE Systems</i> | <i>Grand Panama Beach Resort</i> | <i>Sacred Heart Hospital</i> |
| <i>PBS&J</i> | <i>Forterra Capital Partners</i> | <i>Inland Real Estate</i> |

- Top Ranked Commercial Agent in Bay County:
- #1 in Commercial Sales, #1 in Commercial Land Sales, and #1 in Commercial Leasing.
- Top Producer out of 120 agents at Counts Real Estate Group
- Counts Real Estate Group #1 in total closed transactions in nearly every category: –
- Commercial, Commercial Land, Commercial Leasing Residential and Residential Land, 10 consecutive years and running.