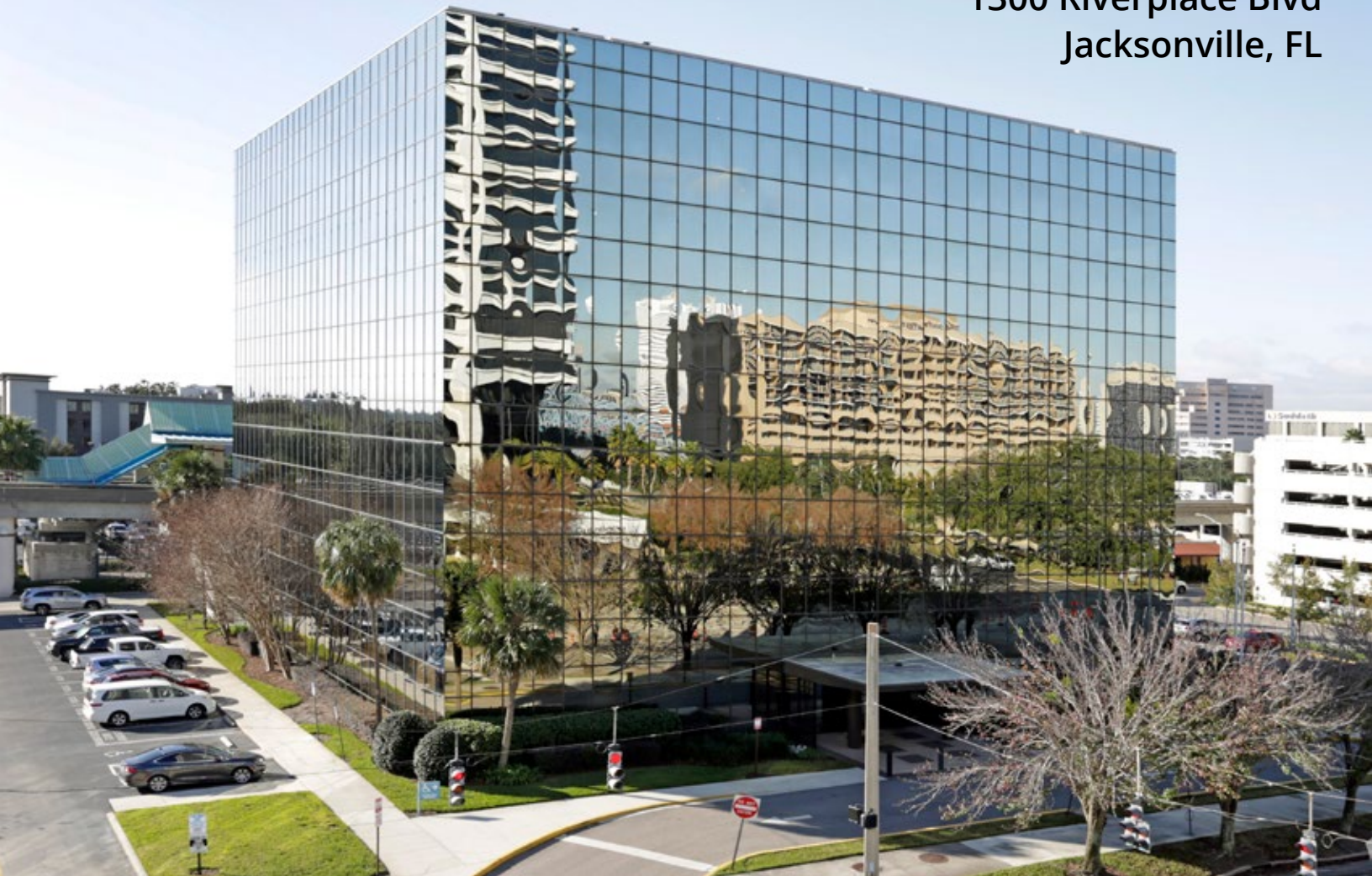


Riverplace South

1300 Riverplace Blvd

Jacksonville, FL



AVAILABLE FOR LEASE

In the heart of the Southbank District

Located on the south side of the St. Johns River, Riverplace South boasts gorgeous views overlooking the river and is surrounded by high-rise office, residential, retail, and hotels.

For further information

Mark Montgomery, CCIM

Senior Vice President

904 708 0542

mark.montgomery@avisonyoung.com

**AVISON
YOUNG**

Riverplace South

1300 Riverplace Blvd

Jacksonville, FL



RIVERPLACE SOUTH HIGHLIGHTS

- Aggressive rental rates
- Eight-story building totaling 112,488 sf
- Renovated common areas, new elevators
- 3.5/1,000 parking ratio
- Courtesy patrol, closed circuit monitoring, and card access for after hours and surface lot entrance

LOCATION HIGHLIGHTS

- Located in the heart of Jacksonville's CBD in the Southbank District on the St. Johns River
- Adjacent to the Skyway's Riverplace Transit Stop
- Steps away from dining, retail, hotels, parks, and arts & culture
- Located off I-95 and within minutes to I-10 and I-295
- 15 miles from Jacksonville International Airport

For further information

Mark Montgomery, CCIM

Senior Vice President

904 708 0542

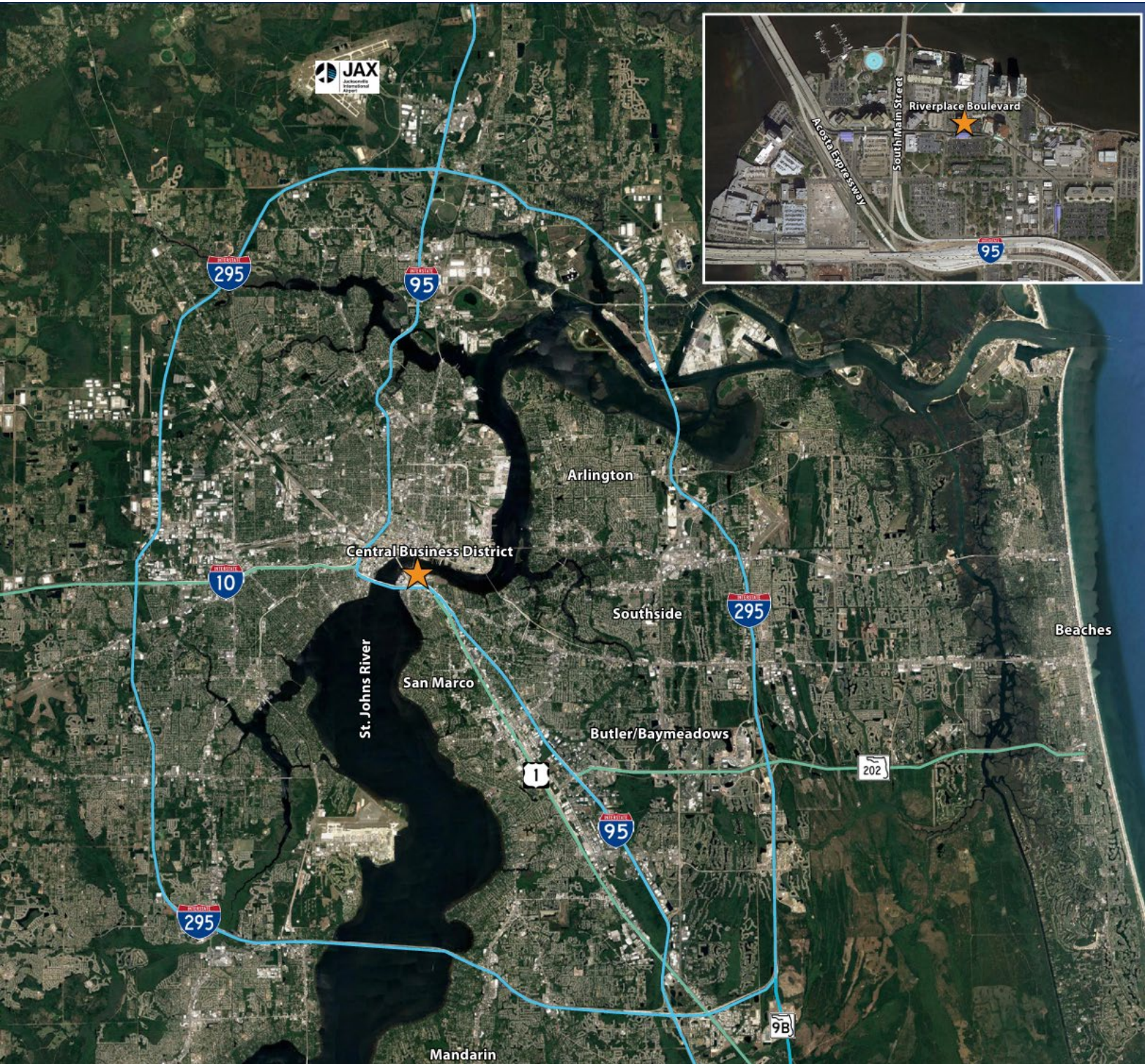
mark.montgomery@avisonyoung.com



Riverplace South

1300 Riverplace Blvd

Jacksonville, FL



For further information

Mark Montgomery, CCIM

Senior Vice President

904 708 0542

mark.montgomery@avisonyoung.com



Riverplace South

1300 Riverplace Blvd

Jacksonville, FL



**If you would like to discuss this further,
please get in touch.**

Mark Montgomery, CCIM

Senior Vice President

904 708 0542

mark.montgomery@avisonyoung.com

© 2025 Avison Young - Florida, LLC. All rights reserved.

E. & O.E.: The information contained herein was obtained from sources which we deem reliable and, while thought to be correct, is not guaranteed by Avison Young.

**AVISON
YOUNG**