

For Lease

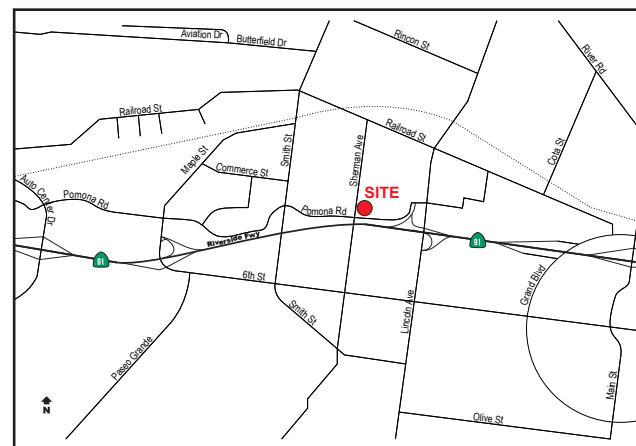
# Corona Lewis Business Center 3,680 SF Industrial Unit For Lease

1251 Pomona Road Unit 108-109, Corona, CA



## Property Details

- ±1,660 of Office Space
- ±2,020 SF of Warehouse Space
- High Identity Building Signage
- 2:1 Parking Ratio
- 2 Ground Level Doors
- 14' Warehouse Clear Height
- 100 Amps Electrical Service
- Freeway Visibility
- Immediate Access to Riverside (91) Freeway



**Reed Rutter**  
SENIOR ASSOCIATE  
949.933.5744  
RRutter@voitco.com  
Lic. #02153762

**Michael Zehner**  
SENIOR VICE PRESIDENT  
714.935.2328  
mczehner@voitco.com  
Lic. # 01917963

**Voit**  
REAL ESTATE SERVICES

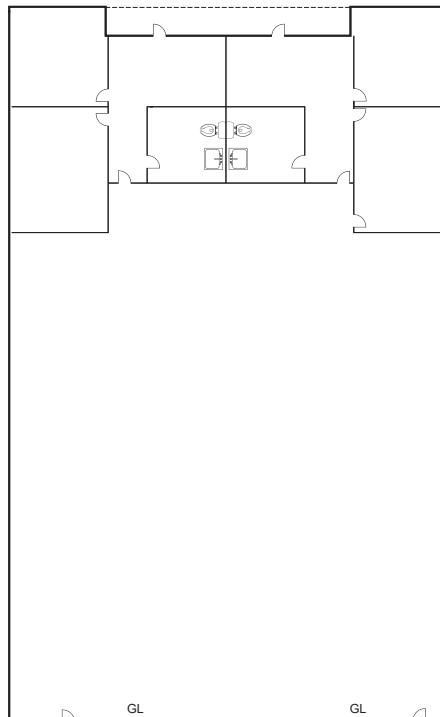
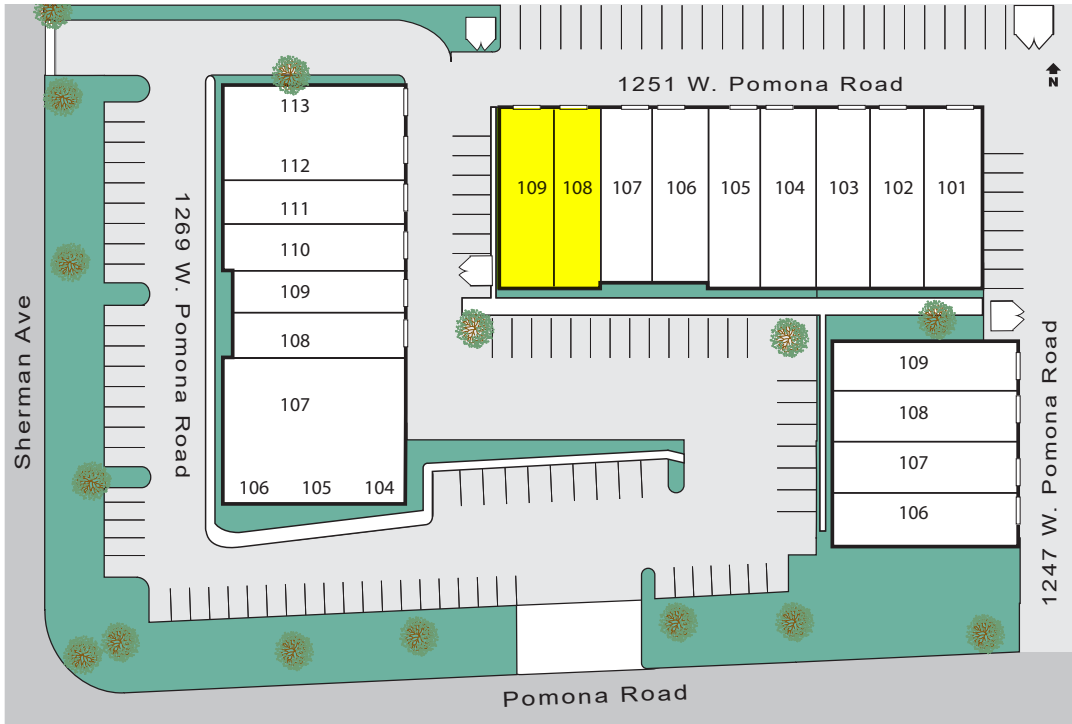
2020 Main Street, Suite 100 | Irvine, California 92614 | 949.851.5100 | 949.261.9092 Fax | Lic #01991785 | www.VoitCo.com

Licensed as Real Estate Salespersons by the CA DRE. The information contained herein has been obtained from sources we deem reliable. While we have no reason to doubt its accuracy, we do not guarantee it. ©2026 Voit Real Estate Services, Inc. All Rights Reserved. License #01991785.

For Lease

# Corona Lewis Business Center 3,680 SF Industrial Unit For Lease

1251 Pomona Road Unit 108-109, Corona, CA



**Reed Rutter**  
SENIOR ASSOCIATE  
949.933.5744  
RRutter@voitco.com  
Lic. #02153762

**Michael Zehner**  
SENIOR VICE PRESIDENT  
714.935.2328  
mczehner@voitco.com  
Lic. # 01917963

**Voit**  
REAL ESTATE SERVICES

2020 Main Street, Suite 100 | Irvine, California 92614 | 949.851.5100 | 949.261.9092 Fax | Lic #01991785 | www.VoitCo.com

Licensed as Real Estate Salespersons by the CA DRE. The information contained herein has been obtained from sources we deem reliable. While we have no reason to doubt its accuracy, we do not guarantee it. ©2026 Voit Real Estate Services, Inc. All Rights Reserved. License #01991785.