

Industrial | For Lease

±176,013 SF Cross-Dock Industrial Building

3225 Venture Drive | Lincoln, CA 95648



Contacts:

TODD SANFILIPPO
Executive Vice President
+1 916 847 3206
todd.sanfilippo@cbre.com
Lic. 0104512

ZAC SWEET
Senior Vice President
+1 916 717 4768
zac.sweet@cbre.com
Lic. 01352800

WALTER SMYTH
Senior Vice President
+1 916 781 4843
walter.smyth@cbre.com
Lic. 00956946

COURTNEY LEE
Associate
+1 916 906 5544
courtney.lee@cbre.com
Lic. 02031694

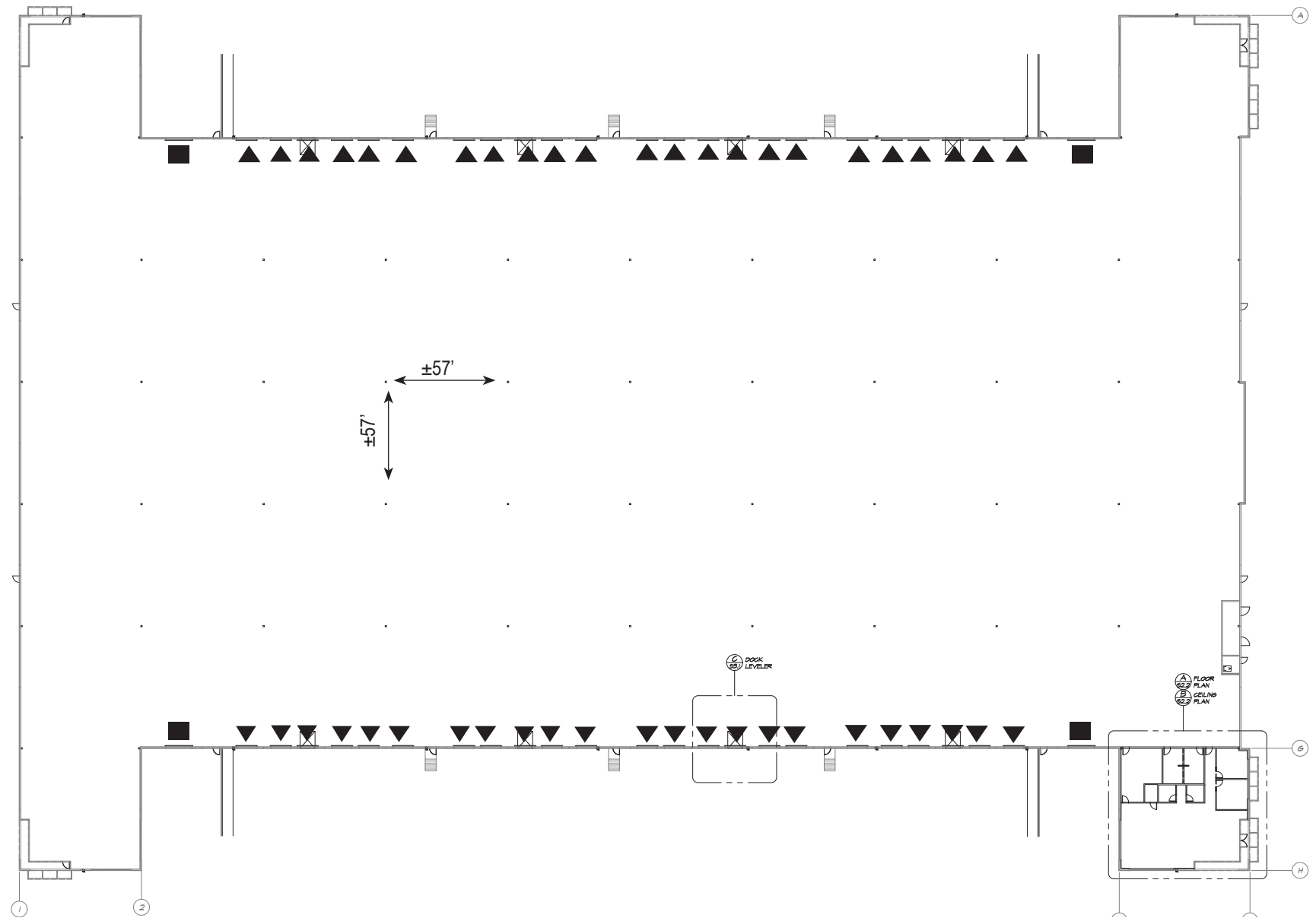
STACY LADD
Senior Asset Manager
+1 916 379 3847
stacyladd@buzzoates.com
Lic. 01214064

DREW BOCOOK
Portfolio Manager
+1 916 379 3856
drewbocook@buzzoates.com
Lic. 01836301



Building Features

- Total Building Area: ±176,013 SF
- Office: ±2,795 SF
- Site Size: ±10.66 Acres
- Clear Height: ±32'
- GL Doors: 4
- DH Doors: 46
- Column Spacing: ±57'x57'
- Power: ±2,500 Amps, 277/480 Volt
- Fire Sprinklers: ESFR
- Passenger Vehicle Parking: ±123 stalls
- Trailer Parking: ±22
- Construcion Type: Concrete Tilt
- Zoning: LLI (per City of Lincoln)
- APN: 021-564-007 (Placer County)

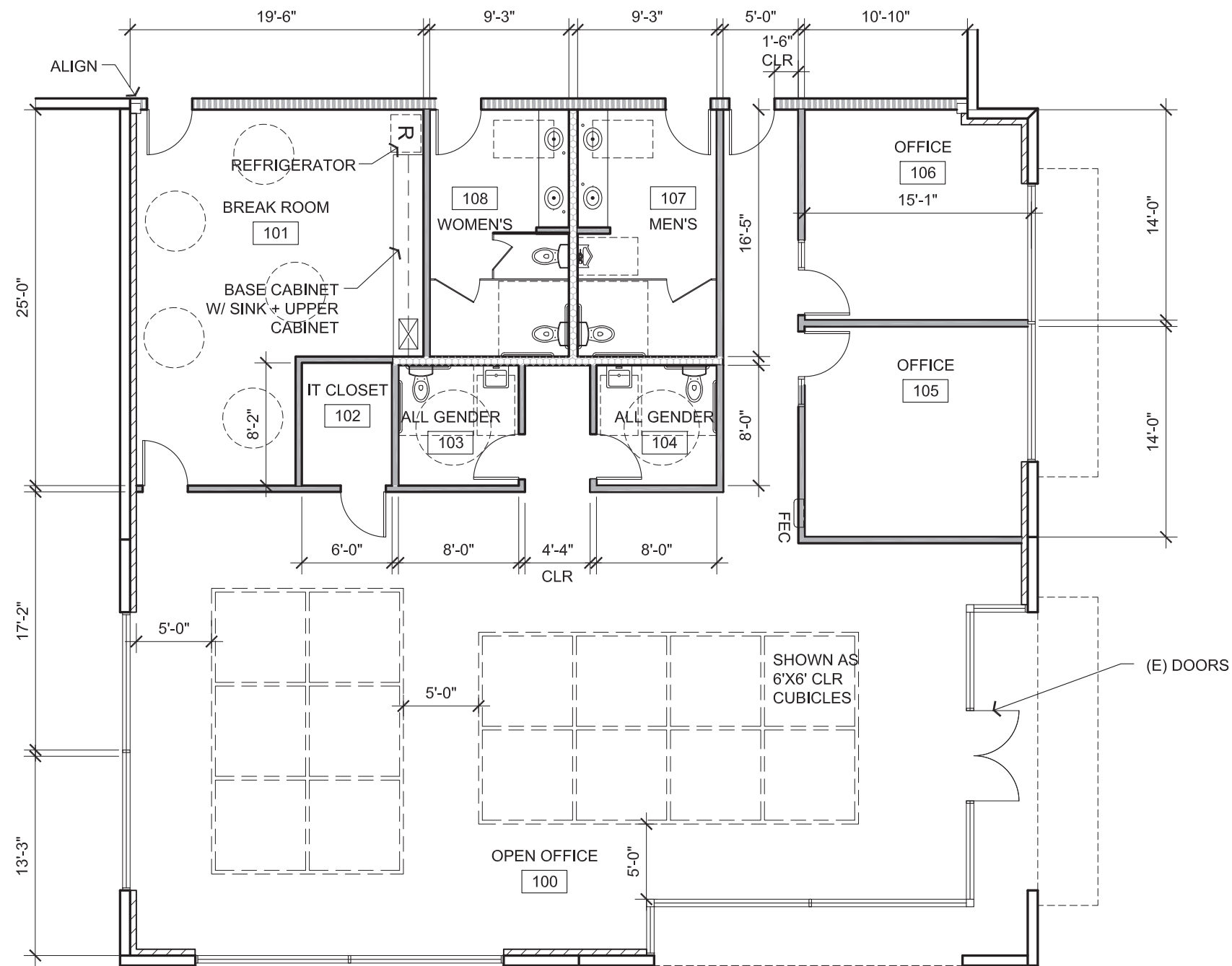


NOT TO SCALE. ALL DIMENSIONS ARE APPROXIMATE.

- = GL Door
- ▼ = Dock Doors



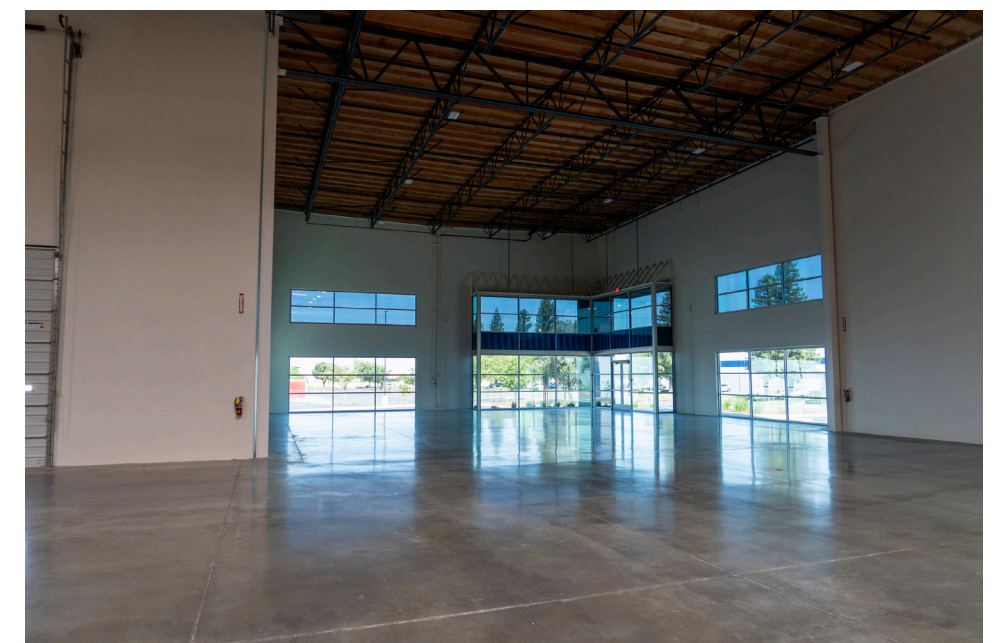
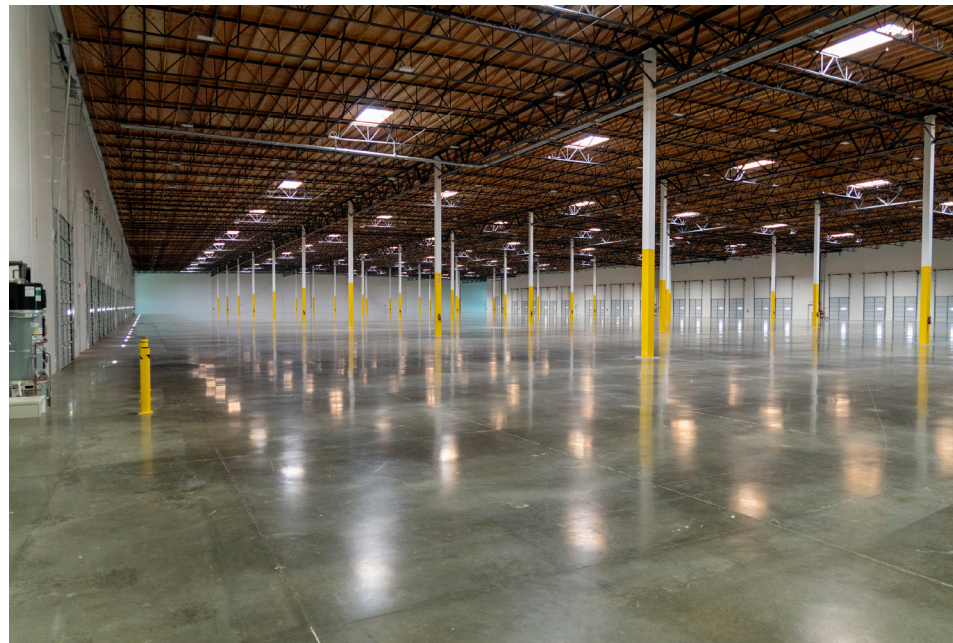
Office Floorplan



NOT TO SCALE. ALL DIMENSIONS ARE APPROXIMATE.



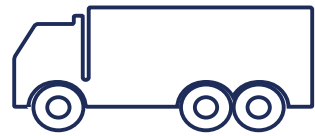
Building Photos



Building Photos



Access Overview



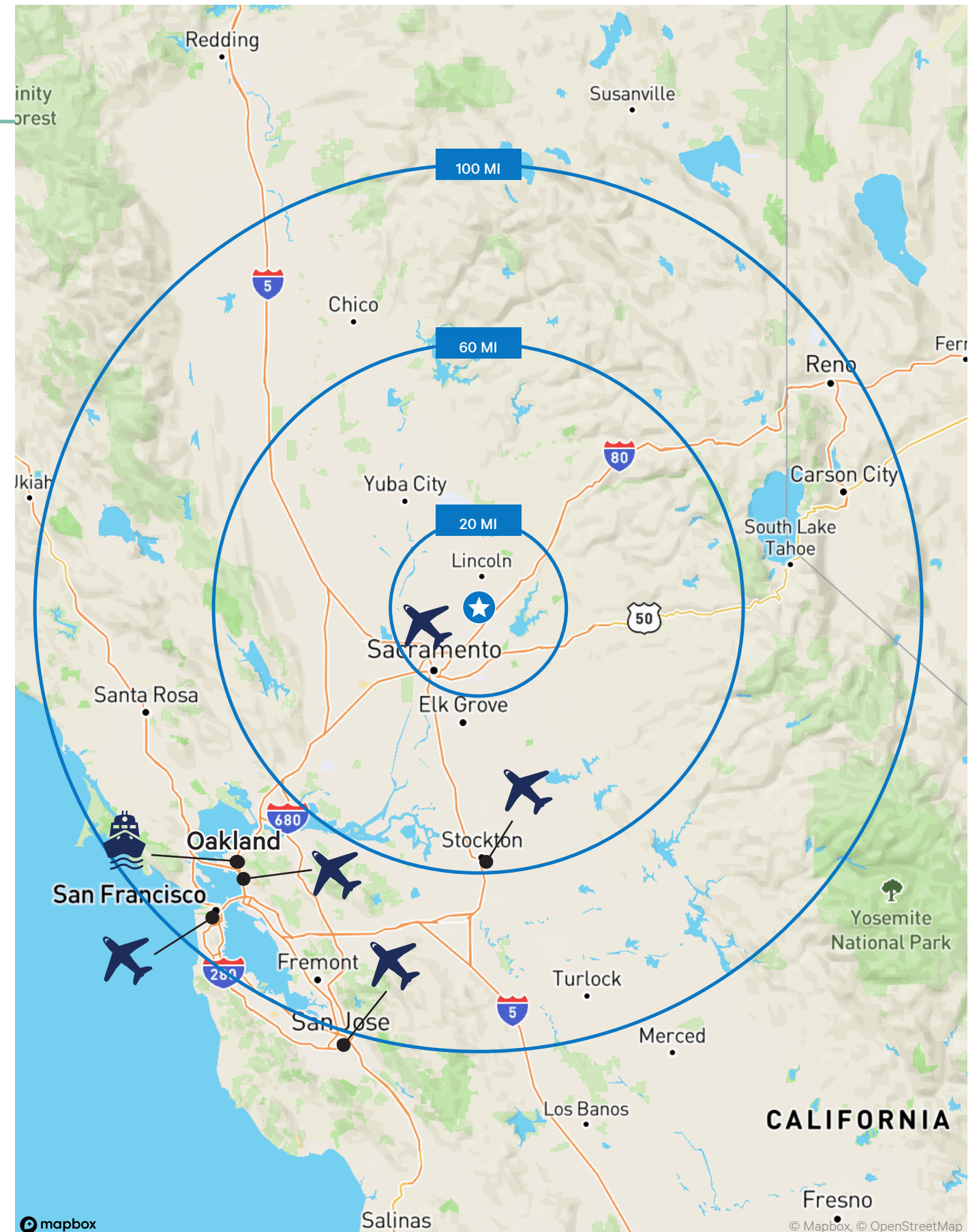
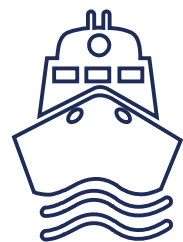
CITY	MILES
DAVIS	38
SACRAMENTO	27
OAKLAND	109
SAN FRANCISCO	110
SAN JOSE	142
RENO	116
FRESNO	199
LOS ANGELES	417
PORTLAND	569
SALT LAKE	634
SEATTLE	742
PHOENIX	780



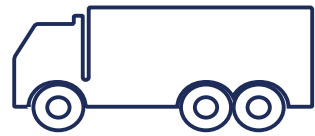
AIRPORT	MILES
SACRAMENTO	24
STOCKTON	79
OAKLAND	114
SAN FRANCISCO	121
SAN JOSE	140



PORT	MILES
PORT OF STOCKTON	77
PORT OF OAKLAND	105
PORT OF LA/ LONG BEACH	438
PORT OF PORTLAND	581
PORT OF SEATTLE	744

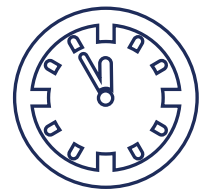


Drive Time to Major Distribution Destinations



Local & Regional

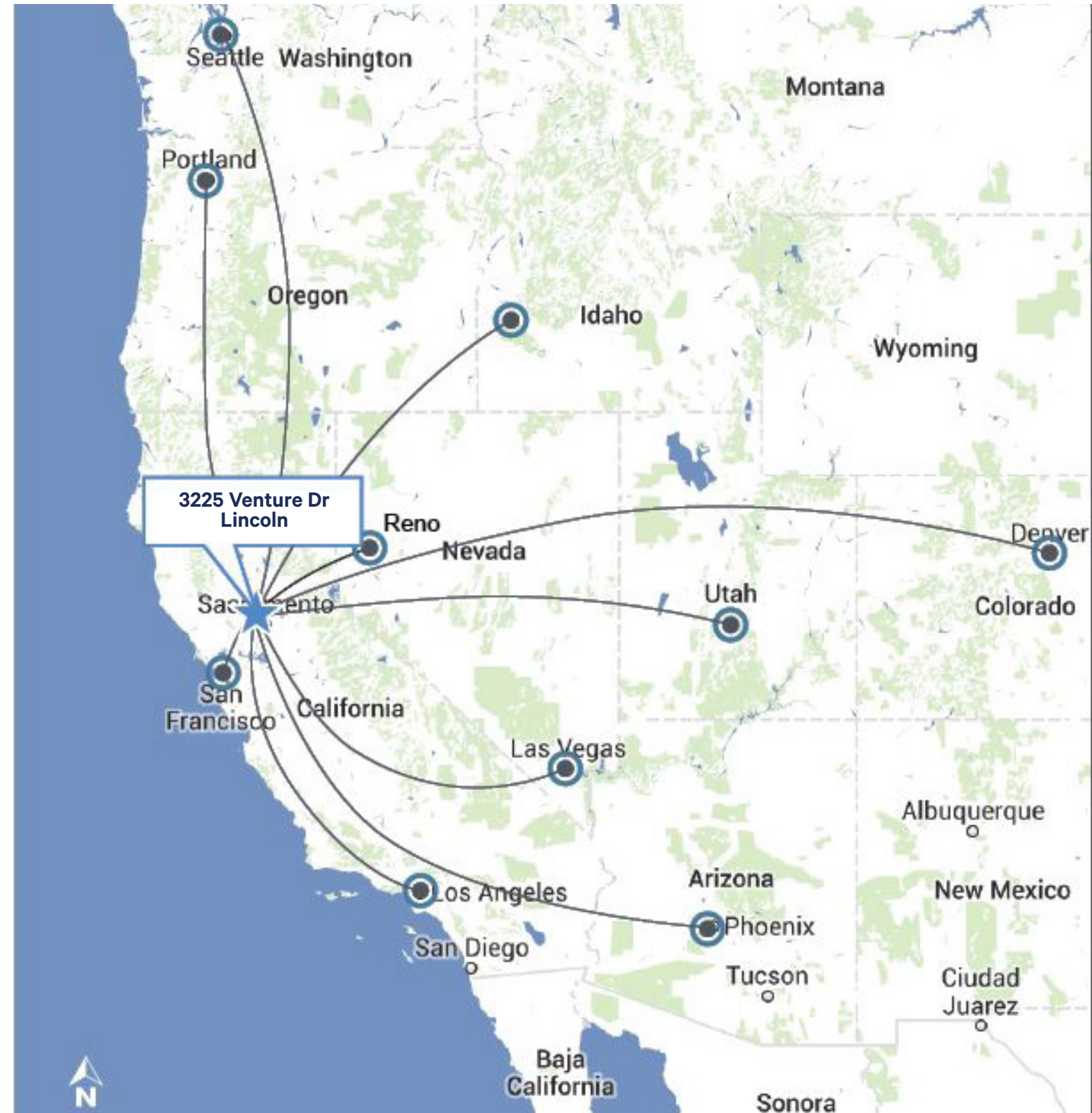
CITY	MILES
DAVIS	37
SACRAMENTO	27
OAKLAND	109
SAN FRANCISCO	110
SAN JOSE	142
RENO	116
FRESNO	199
LOS ANGELES	411
PORTLAND	569
SALT LAKE	634
SEATTLE	742
PHOENIX	780



Western U.S.

AIRPORT	MILES
SACRAMENTO	24
STOCKTON	79
OAKLAND	114
SAN FRANCISCO	121
SAN JOSE	140

PORT	MILES
PORT OF STOCKTON	77
PORT OF OAKLAND	105
PORT OF LA/ LONG BEACH	438
PORT OF PORTLAND	581
PORT OF SEATTLE	744



Retail Amenities



3225 Venture Drive | Lincoln, CA 95648

Contact Us:

Todd Sanfilippo, SIOR
Executive Vice President
+1 916 781 4859
todd.sanfilippo@cbre.com

Zac Sweet
Senior Vice President
+1 916 717 4768
zac.sweet@cbre.com

Walter Smyth
Senior Vice President
+1 916 781 4843
walter.smyth@cbre.com

Courtney Lee
Associate
+1 916 906 5544
courtney.lee@cbre.com

Stacy Ladd
Senior Asset Manager
+1 916 379 3847
stacyladd@buzzoates.com

Drew Bocook
Portfolio Manager
+1 916 379 3856
drewbocook@buzzoates.com