



Available Q2 2026

Flex Building For Lease

Another Quality Institutionally Owned & Managed
Asset By Rexford Industrial



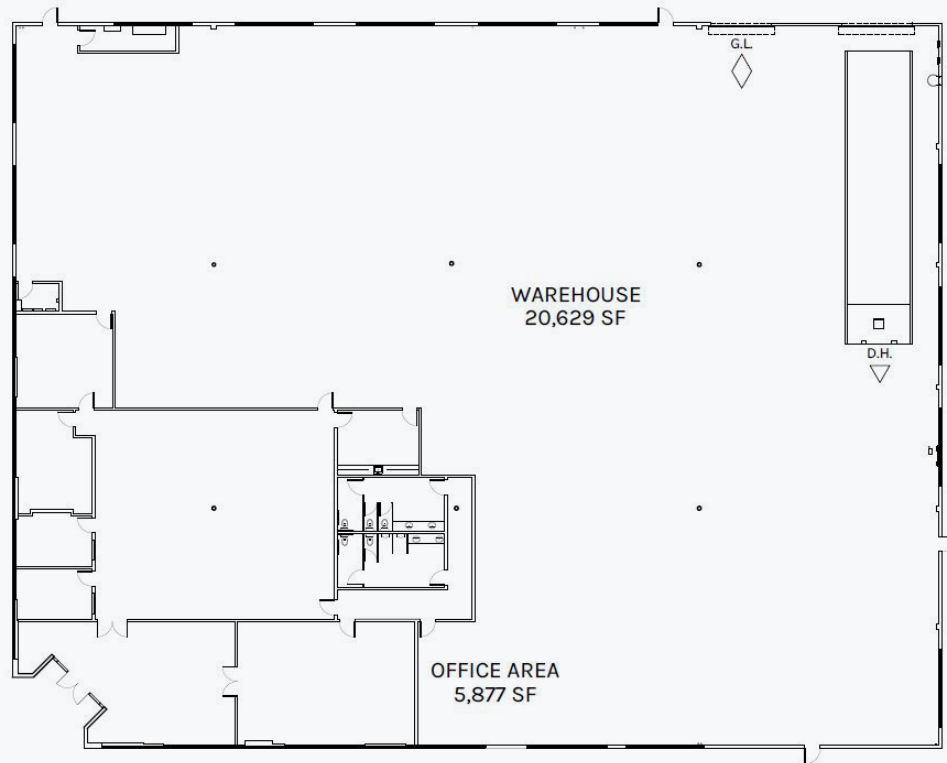
10860 6TH STREET

Rancho Cucamonga, CA

EMPIRE LAKES

26,506 Square Foot Freestanding Building with 1 Dock High Loading Door,
Corporate Identity, and 119 Parking Spaces





PROPERTY HIGHLIGHTS

- Freestanding identity building totaling 26,506 Rentable Square Feet
- 5,877 Square Feet of office with high end finishes
- Abundant 4.5 : 1,000 SF parking ratio
- 1 Dock High Loading Door and 1 Grade Level Loading Door
- 24' minimum warehouse clearance; 400 Amps 277-480V 3 Phase Power
- High Visibility Corner Location
- Numerous retail support services nearby including Ontario Mills and Victoria Gardens



Property Location

10860 6TH ST



KEY DISTANCES

ONT Airport
3.3 MILES

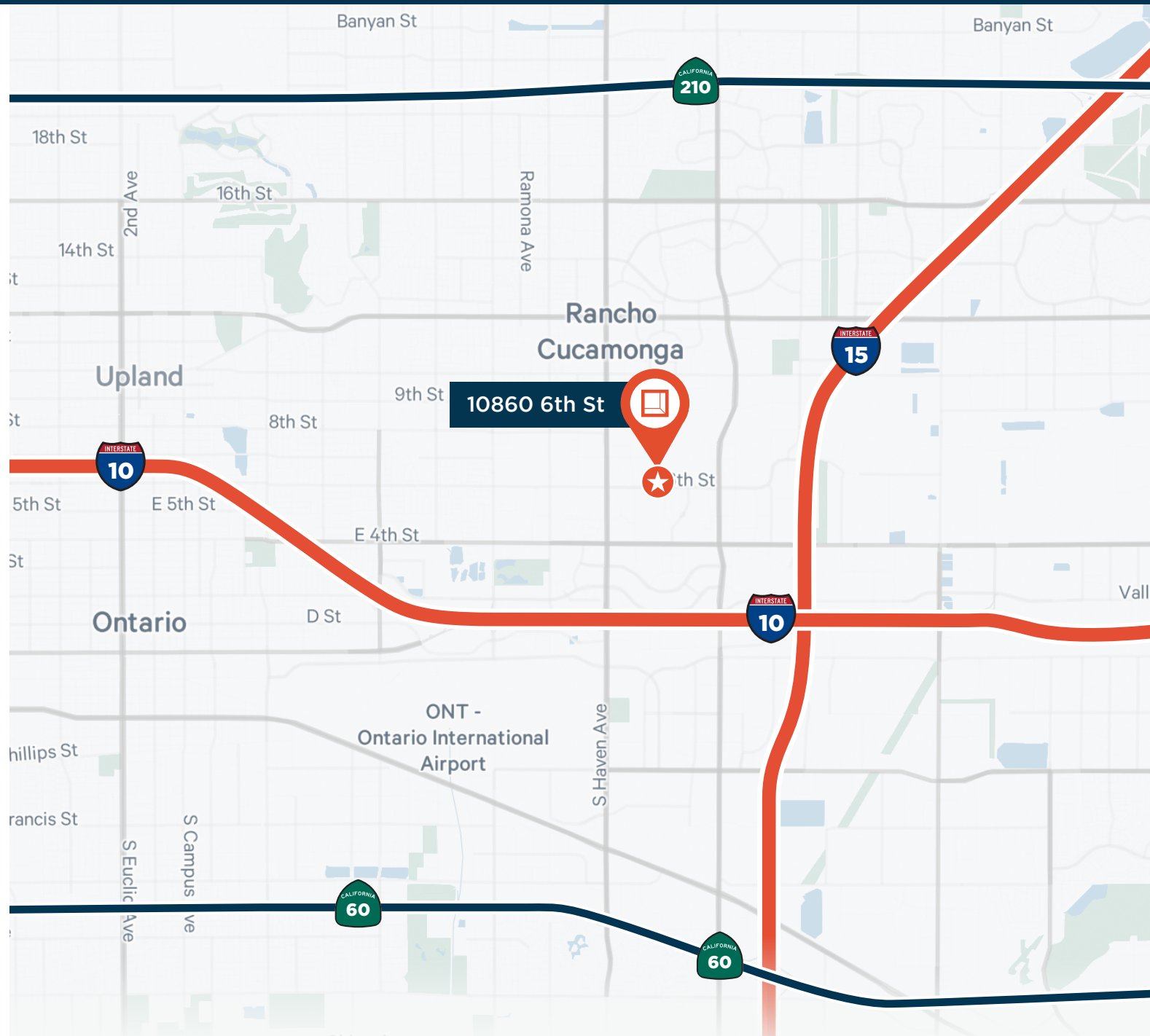
Victoria Gardens
4 MILES

BNSF Intermodal Railyard
21 MILES

FedEx Hub
4 MILES

UPS Hub
3 MILES

Nearest on/off Ramp
1.59 MILE





**Rexford
Industrial**

Contact:

Richard Lee

Senior Vice President
+1 909 418 2010
richard.lee@cbre.com
Lic. 01757870

Nicholas Chang

Senior Vice President
+1 949 375 2310
nicholas.chang@cbre.com
Lic. 01344844

Justin Kuehn

First Vice President
+1 949 370 5931
justin.kuehn@cbre.com
Lic. 01966182

Sione Fua

Vice President
+1 909 418 2007
sione.fua@cbre.com
Lic. 02006432

© 2025 CBRE, Inc. All rights reserved. This information has been obtained from reliable sources but has not been verified for accuracy or completeness. CBRE, Inc. makes no guarantee, representation, or warranty and accepts no responsibility or liability for the accuracy, completeness, or reliability of the information contained herein. You should conduct a careful, independent investigation of the property and verify all information. Any reliance on this information is solely at your own risk. CBRE and the CBRE logo are service marks of CBRE, Inc. All other marks displayed on this document are the property of their respective owners, and the use of such marks does not imply any affiliation with or endorsement of CBRE. Photos herein are the property of their respective owners. Use of these images without the express written consent of the owner is prohibited.

CBRE