

# 2501 W. BURBANK BLVD., BURBANK, CA

## JENNIFER DONALDSON

Principal

818.933.0347

[jdonaldson@lee-re.com](mailto:jdonaldson@lee-re.com)

DRE #01317737



COMMERCIAL REAL ESTATE SERVICES

Lee & Associates®- LA North/Ventura, Inc.

*A Member of the Lee & Associates Group of Companies*

15060 Ventura Blvd, Suite 100

Sherman Oaks, CA 91403

P 818.986.9800 F 818.783.9260

No warranty or representation is made as to the accuracy of the foregoing information. Terms of sale or lease and availability are subject to change or withdrawal without notice. Corporate ID #01191898



## AVAILABLE SUITES

Suite 201	1,000 RSF	Available Now
Suite 307	1,261 RSF	Available with Notice

## BASE RENT

\$2.85/PSF, FSG

## PARKING

\$50.00/Reserved Space per Month

## AMENITIES

- Elevator Serviced and Professionally Managed Creative Building
- HVAC Available 24/7 at No Additional Cost as well as Operable Windows
- Rates Also Include Utilities, Building Services and Property Expenses
- Easy Access to 5, 170 and 134 Freeways
- Restaurants and Shopping within Walking Distance



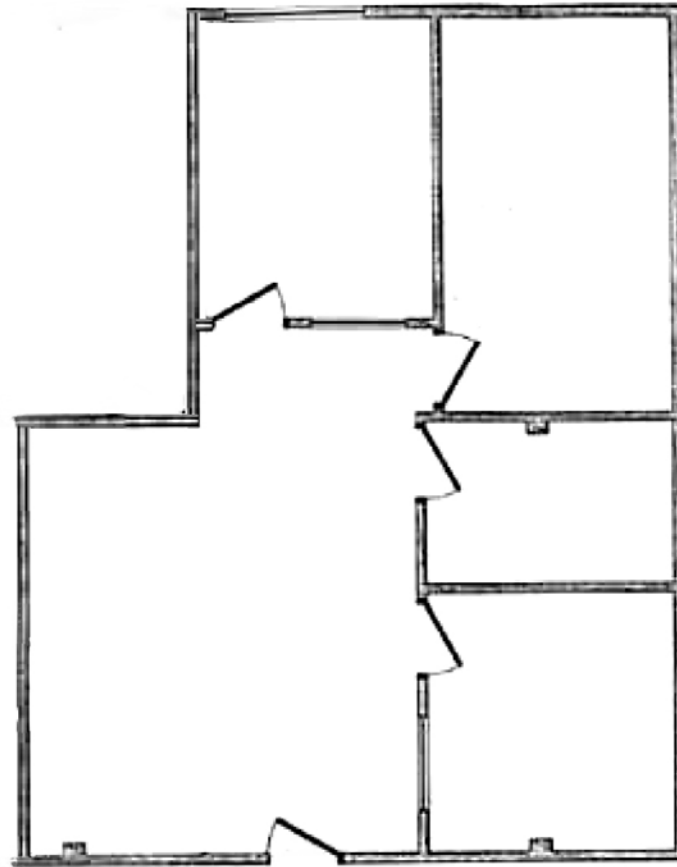
**JENNIFER DONALDSON 818.933.0347**

PRINCIPAL | DRE 01317737

JDONALDSON@LEE-RE.COM



**SUITE 201 - 1,000 RSF**

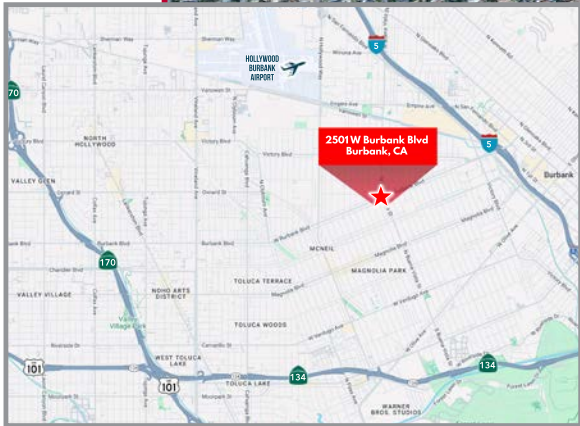


**JENNIFER DONALDSON 818.933.0347**

PRINCIPAL | DRE 01317737

[JDONALDSON@LEE-RE.COM](mailto:JDONALDSON@LEE-RE.COM)





JENNIFER DONALDSON 818.933.0347

PRINCIPAL | DRE #01317737

JDONALDSON@LEE-RE.COM

