

FOR LEASE

23731 EL TORO RD | LAKE FOREST, CA

YOUR NAME HERE

LAST SUITES AVAILABLE

orange county
OFFICE | GROUP

LEE &
ASSOCIATES
COMMERCIAL REAL ESTATE SERVICES

AVAILABLE FOR LEASE

- LAST SUITES AVAILABLE
- PRIME RETAIL STREET FRONTAGE ON EL TORO ROAD
- IMMEDIATE 5 FREEWAY ACCESS VIA EL TORO ROAD ON AND OFF RAMP
- BUILDING TOP SIGNAGE AT A MAJOR INTERSECTION
- ±1,517 SF AVAILABLE ON THE FIRST FLOOR
- OPEN, EFFICIENT, CREATIVE SPACE
- PRIVATE RESTROOMS, DROPPED CEILING, LIGHTING AND DISTRIBUTED HVAC
- PERFECT FOR RETAIL, MEDICAL OR PROFESSIONAL OFFICE USER LOOKING FOR GREAT EXPOSURE
- SPACE IS DIVISIBLE INTO SMALLER SUITES
- PROFESSIONALLY MANAGED AND MAINTAINED
- EXCELLENT FINANCIAL, RESTAURANT AND ASSORTED SERVICES WITHIN WALKING DISTANCE
- 5:1 SURFACE PARKING, FREE OF CHARGE
- \$3.95 NNN (\$1.05 NETS)
- AVAILABLE NOW



ALLEN BASSO
Senior Vice President
Lic. #01298152
949.790.3130
abasso@leeirvine.com



ERIC DARNELL
Senior Vice President
Lic. #01888743
949.460.3681
edarnell@leeirvine.com



KYLEE KING
Vice President
Lic. #02101275
949.790.3108
kking@leeirvine.com

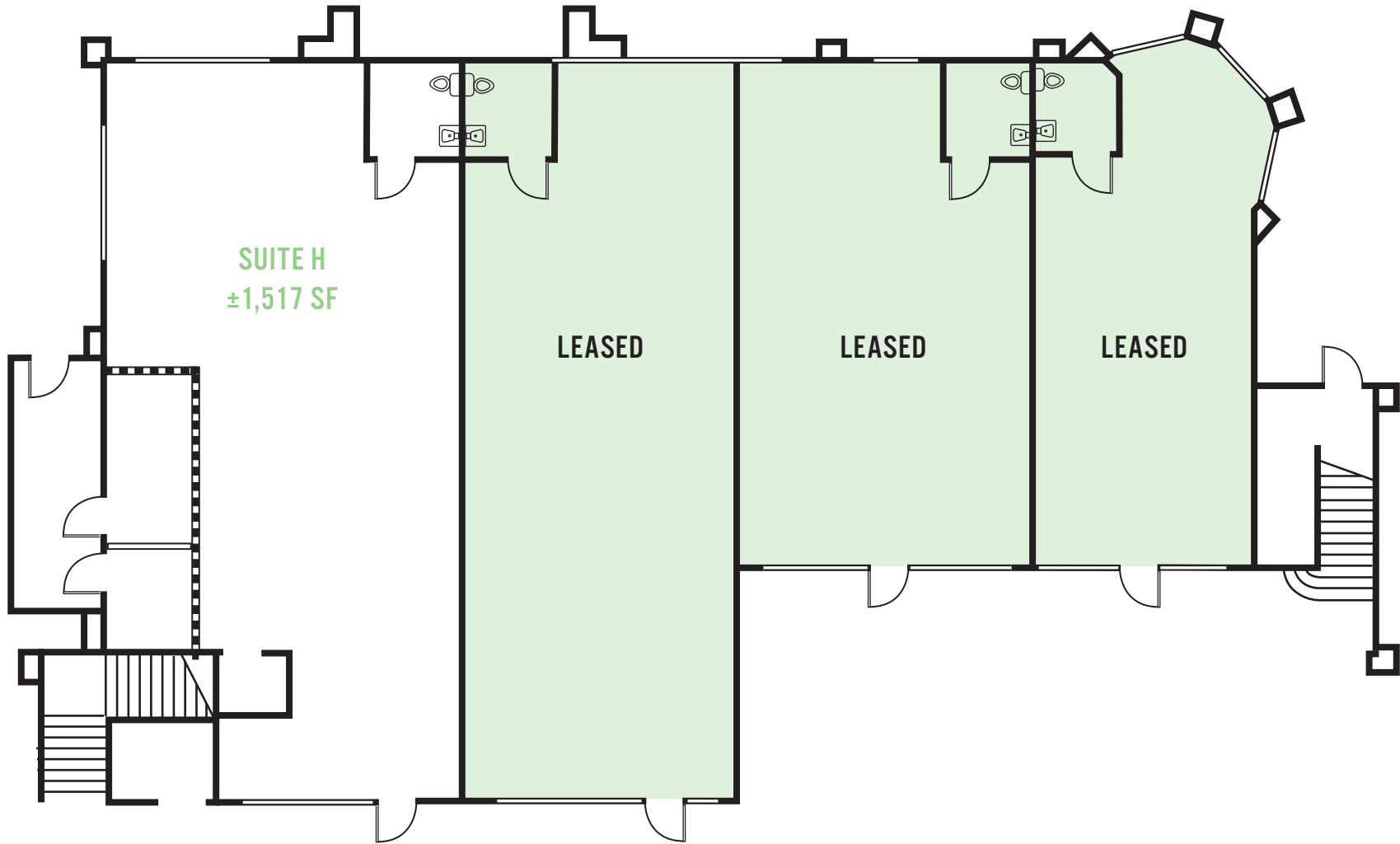


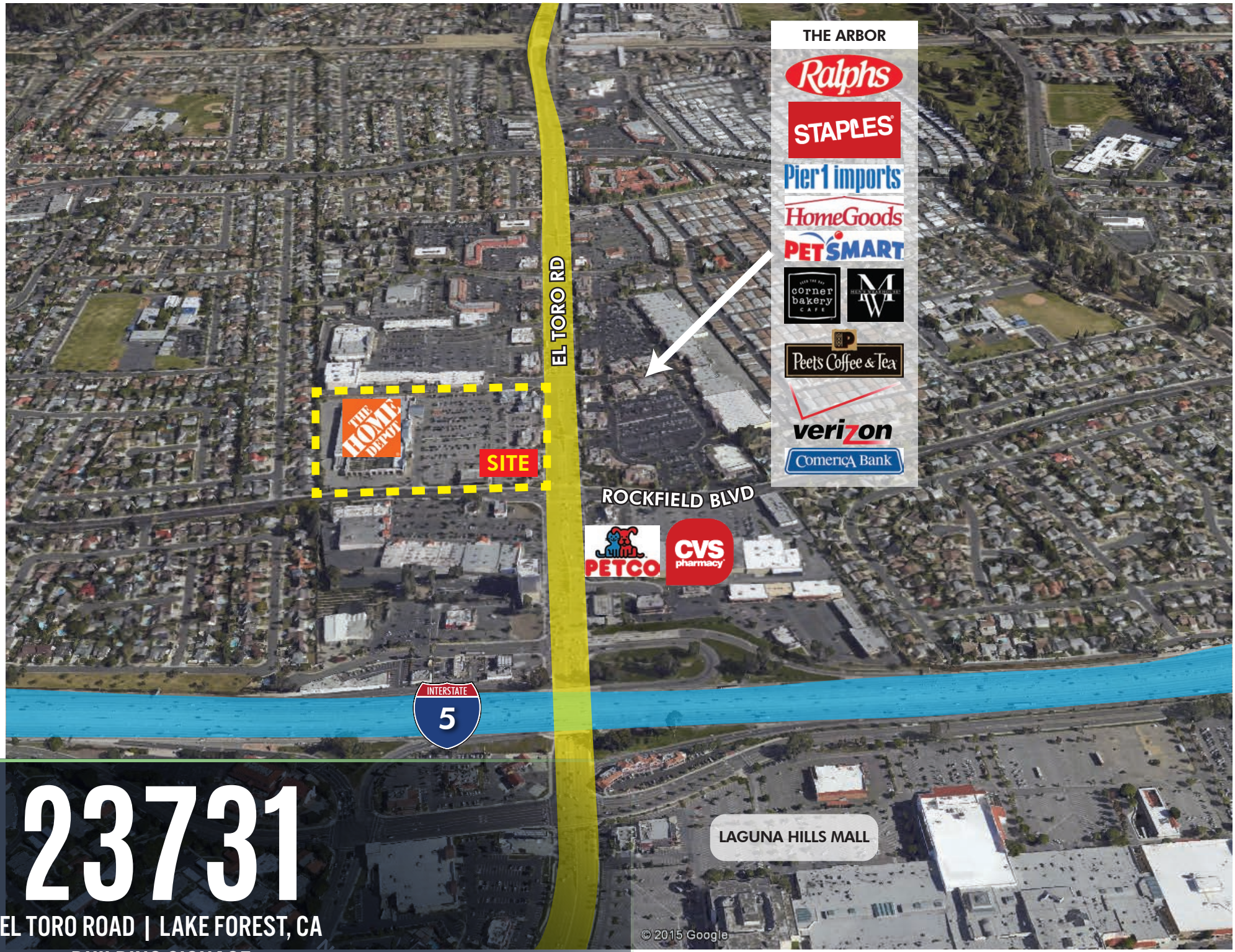
23731

EL TORO ROAD | LAKE FOREST, CA
BUILDING SIGNAGE



EL TORO ROAD





THE ARBOR



EL TORO RD



SITE

ROCKFIELD BLVD



LAGUNA HILLS MALL

23731

EL TORO ROAD | LAKE FOREST, CA
BUILDING SIGNAGE

© 2015 Google