

3233 BIDDLE AVENUE
WYANDOTTE, MICHIGAN

RETAIL FOR SALE
4,000 Square Feet Available



**SIGNATURE
ASSOCIATES**
KNOW SIGNATURE | KNOW RESULTS

TURN-KEY RESTAURANT



PROPERTY FEATURES

- 4,000 square feet
- Located in Downtown Wyandotte
- Includes furniture, fixtures, equipment, and liquor license
- Fully remodeled in 2016 (new roof, HVAC, etc.)
- Zoned CBD
- Excellent condition
- Sale Price: \$1,200,000 (\$300.00/sq. ft.)



For more information, please contact:

JUSTIN GAFFREY
(248) 799 3143
jgaffrey@signatureassociates.com

STEVE GORDON
(248) 948 0101
sgordon@signatureassociates.com

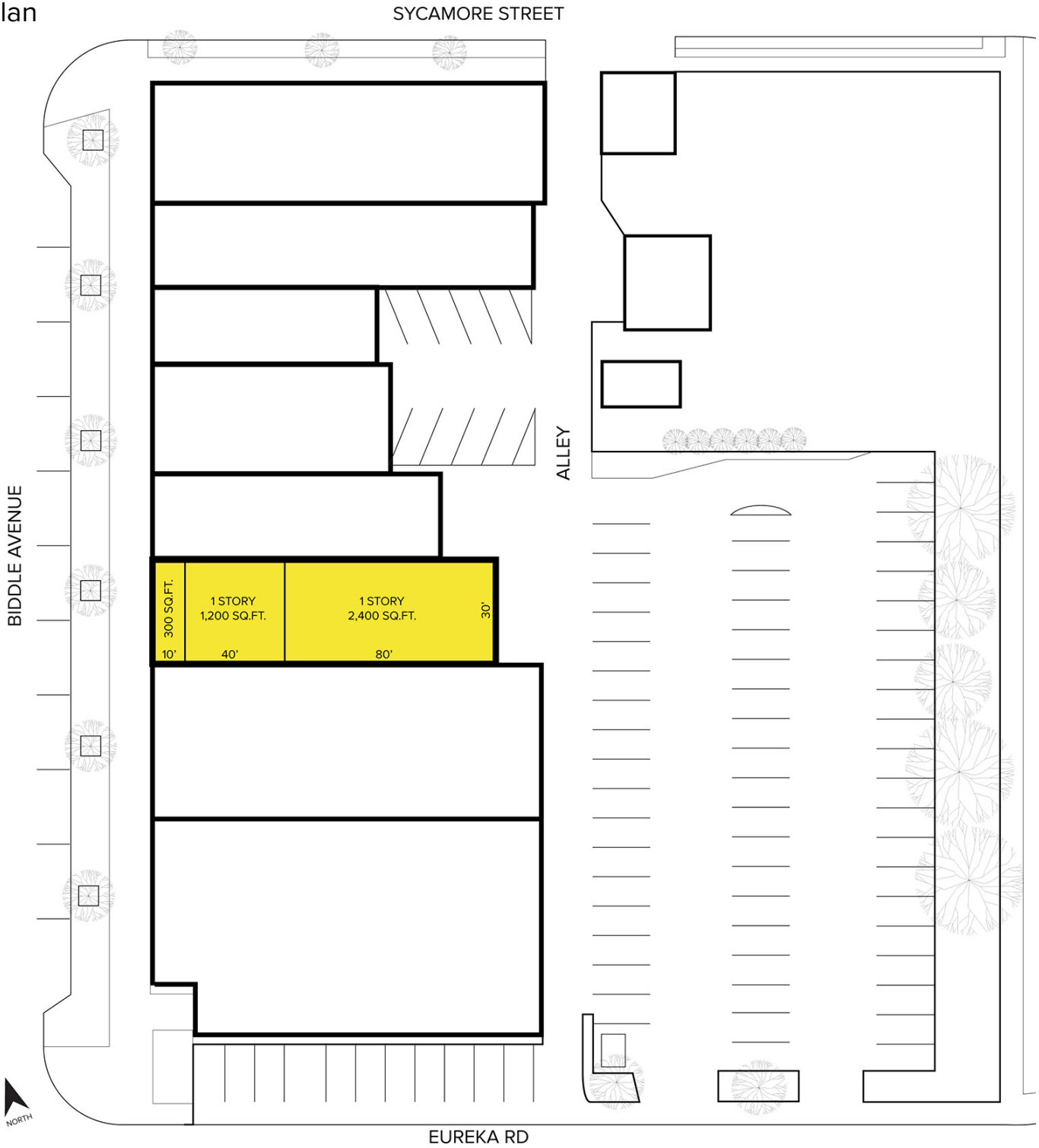
SIGNATURE ASSOCIATES
One Towne Square, Suite 1200
Southfield, MI 48076
www.signatureassociates.com

3233 Biddle Avenue – Wyandotte, Michigan

Retail For Sale

4,000
Square Feet
AVAILABLE

Site Plan



For more information, please contact:

JUSTIN GAFFREY
(248) 799 3143
jgaffrey@signatureassociates.com

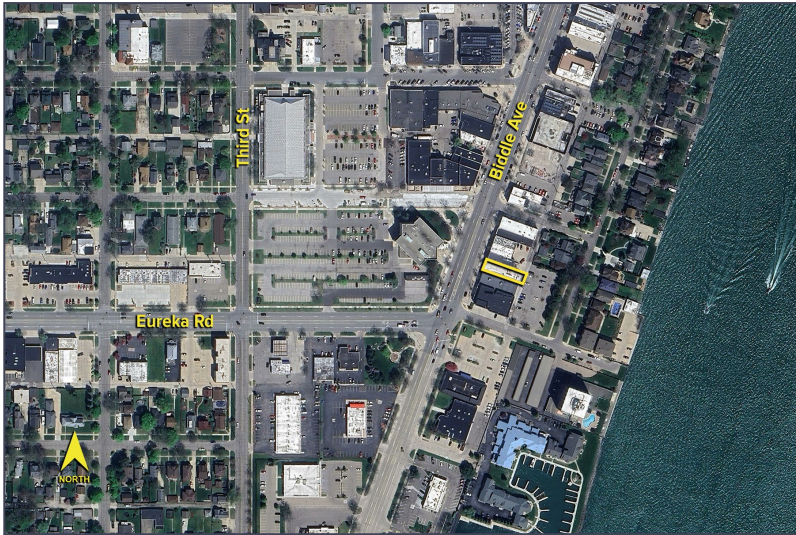
STEVE GORDON
(248) 948 0101
sgordon@signatureassociates.com

SIGNATURE ASSOCIATES
One Towne Square, Suite 1200
Southfield, MI 48076
www.signatureassociates.com

3233 Biddle Avenue – Wyandotte, Michigan

Retail For Sale

4,000
Square Feet
AVAILABLE

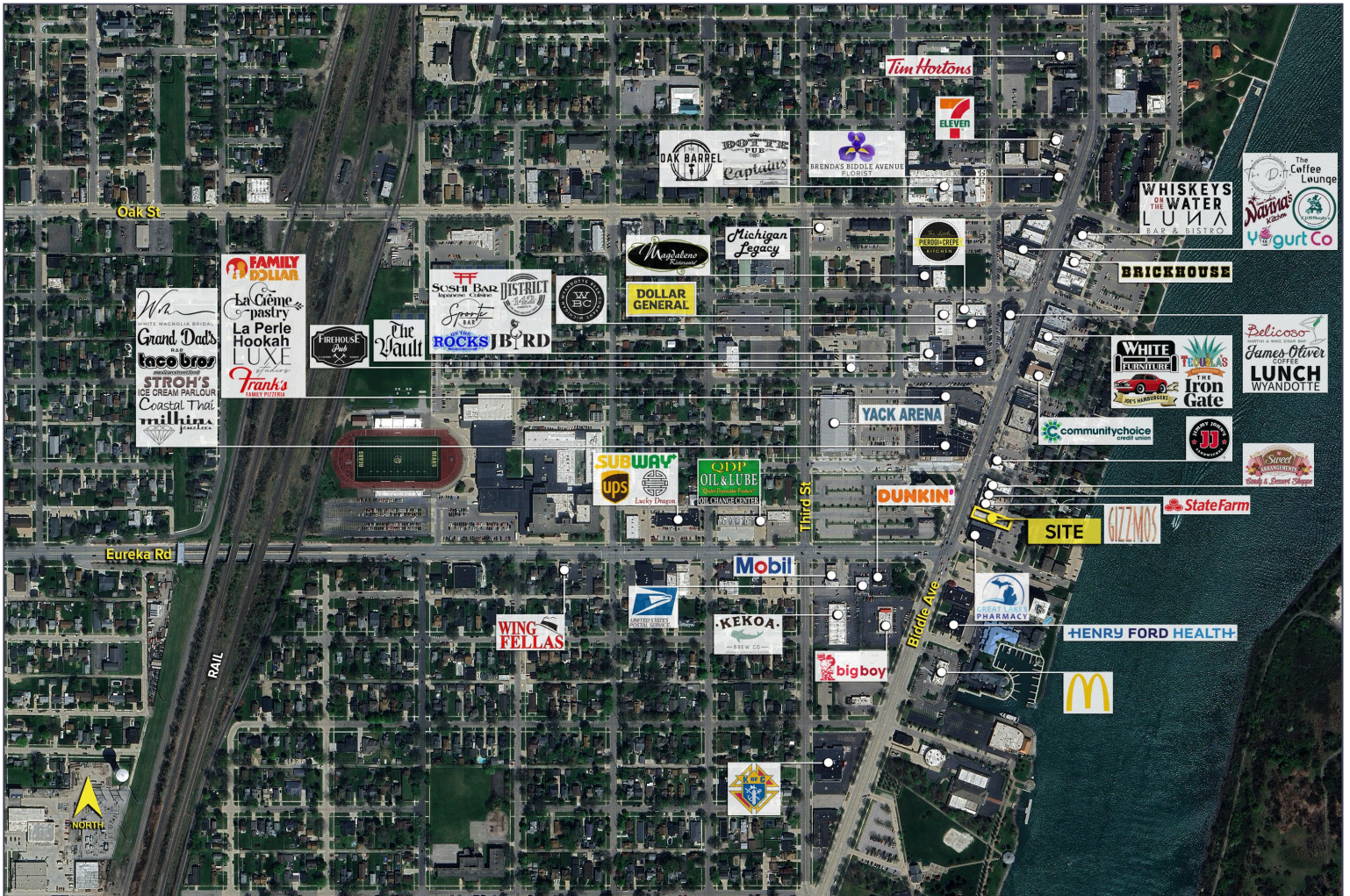


DEMOGRAPHICS

	POPULATION	MED. HH INCOME
1 MILE	6,916	\$60,248
3 MILE	63,200	\$65,719
5 MILE	157,913	\$68,070

TRAFFIC COUNTS (TWO-WAY)

16,993	Biddle Ave. N. of Eureka Rd. 2-Way
13,149	Biddle Ave. S. of Eureka Rd. 2-Way
10,779	Eureka Rd. W. of Biddle Rd. 2-Way



For more information, please contact:

JUSTIN GAFFREY
(248) 799 3143
jgaffrey@signatureassociates.com

STEVE GORDON
(248) 948 0101
sgordon@signatureassociates.com

SIGNATURE ASSOCIATES
One Towne Square, Suite 1200
Southfield, MI 48076
www.signatureassociates.com