



BOOSALIS
PROPERTIES

REAL ESTATE INVESTMENT AND MANAGEMENT

UP TO 2,509 SQ. FT. AVAILABLE FOR LEASE

3299 WOODBURN ROAD, SUITE 370, ANNANDALE VA 22003

FOR LEASE



PROPERTY FEATURES

- Space Available:** Up to 2509 SF, all or partial
(1,200 SF - co-working arrangement)
- Lease Term:** 1-8 years
- Price:** \$35 PSF, plus utilities
- 10 to 30 minutes from Tysons, Arlington, Alexandria, Herndon, Falls Church, Reston, and Washington, DC.
 - Anchored by Inova Health with co-tenants in specialties like nuclear medicine, radiology, pathology, lab testing, and rehabilitation.
 - Complex includes surface/garage parking, on-site deli, and bank services.

PROPERTY DESCRIPTION

- Attractive medical arts building off of I-495 and Gallows in Annandale, VA.
- Space includes reception area, 8 offices, kitchen and two conference rooms.
- Sublease from existing tenant with flexible term from one to eight years (through early 2034).
- Priced at \$35 PSF modified gross; tenant pays proportionate share of electricity charge.

FOR MORE INFORMATION

DOUG COMER

doug@boosalisproperties.com
703.494.7691 (o) | 202.500.1975 (c)

GEORGE BOOSALIS

President/Principal Broker
george@boosalisproperties.com
703.494.7691 (o)

BOOSALIS PROPERTIES

13562 Richmond Highway, Suite 100
Woodbridge, VA 22191
www.BoosalisProperties.com



BOOSALIS
PROPERTIES

REAL ESTATE INVESTMENT AND MANAGEMENT

UP TO 2,509 SQ. FT. AVAILABLE FOR LEASE

3299 WOODBURN ROAD, SUITE 370, ANNANDALE VA 22003

PHOTOS



FOR MORE INFORMATION

DOUG COMER

doug@boosalisproperties.com

703.494.7691 (o) | 202.500.1975 (c)

GEORGE BOOSALIS

President/Principal Broker

george@boosalisproperties.com

703.494.7691 (o)

BOOSALIS PROPERTIES

13562 Richmond Highway, Suite 100

Woodbridge, VA 22191

www.BoosalisProperties.com

This information has been obtained through sources deemed reliable, but accuracy can not be guaranteed.



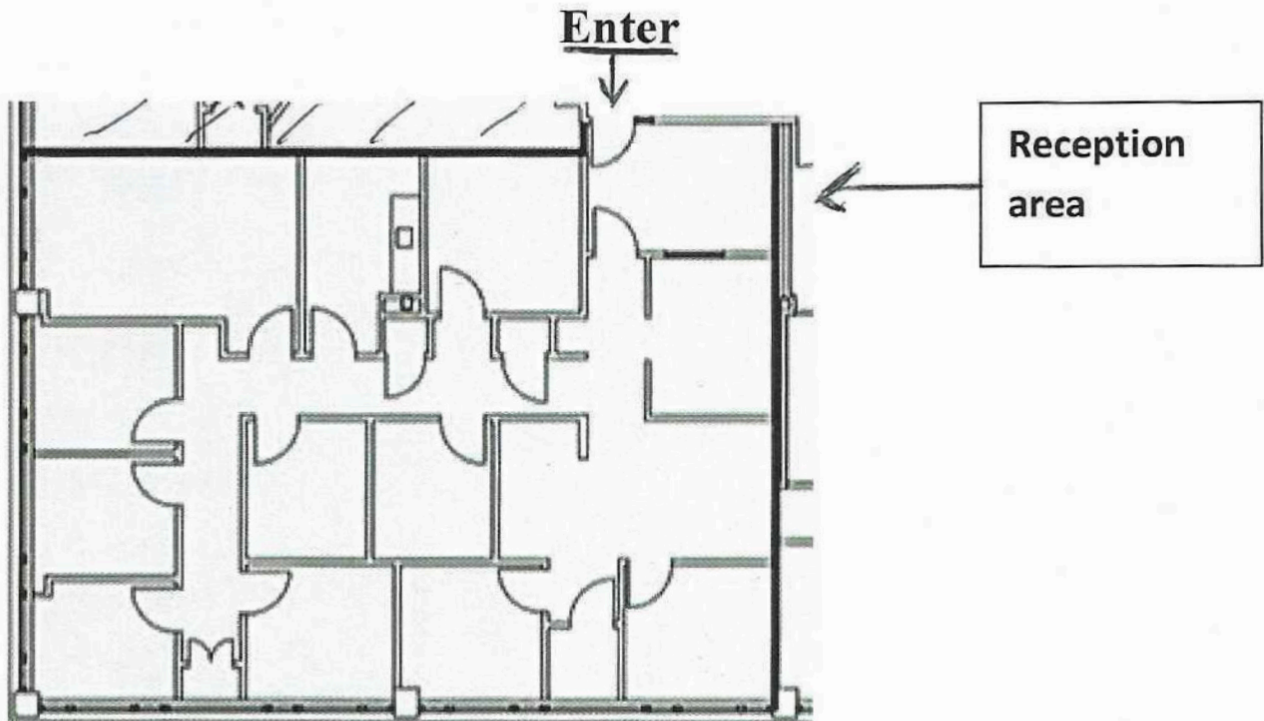
BOOSALIS
PROPERTIES

REAL ESTATE INVESTMENT AND MANAGEMENT

UP TO 2,509 SQ. FT. AVAILABLE FOR LEASE

3299 WOODBURN ROAD, SUITE 370, ANNANDALE VA 22003

FLOOR PLAN



SUITE 370

LEASED

FOR MORE INFORMATION

DOUG COMER

doug@boosalisproperties.com

703.494.7691 (o) | 202.500.1975 (c)

GEORGE BOOSALIS

President/Principal Broker

george@boosalisproperties.com

703.494.7691 (o)

BOOSALIS PROPERTIES

13562 Richmond Highway, Suite 100

Woodbridge, VA 22191

www.BoosalisProperties.com



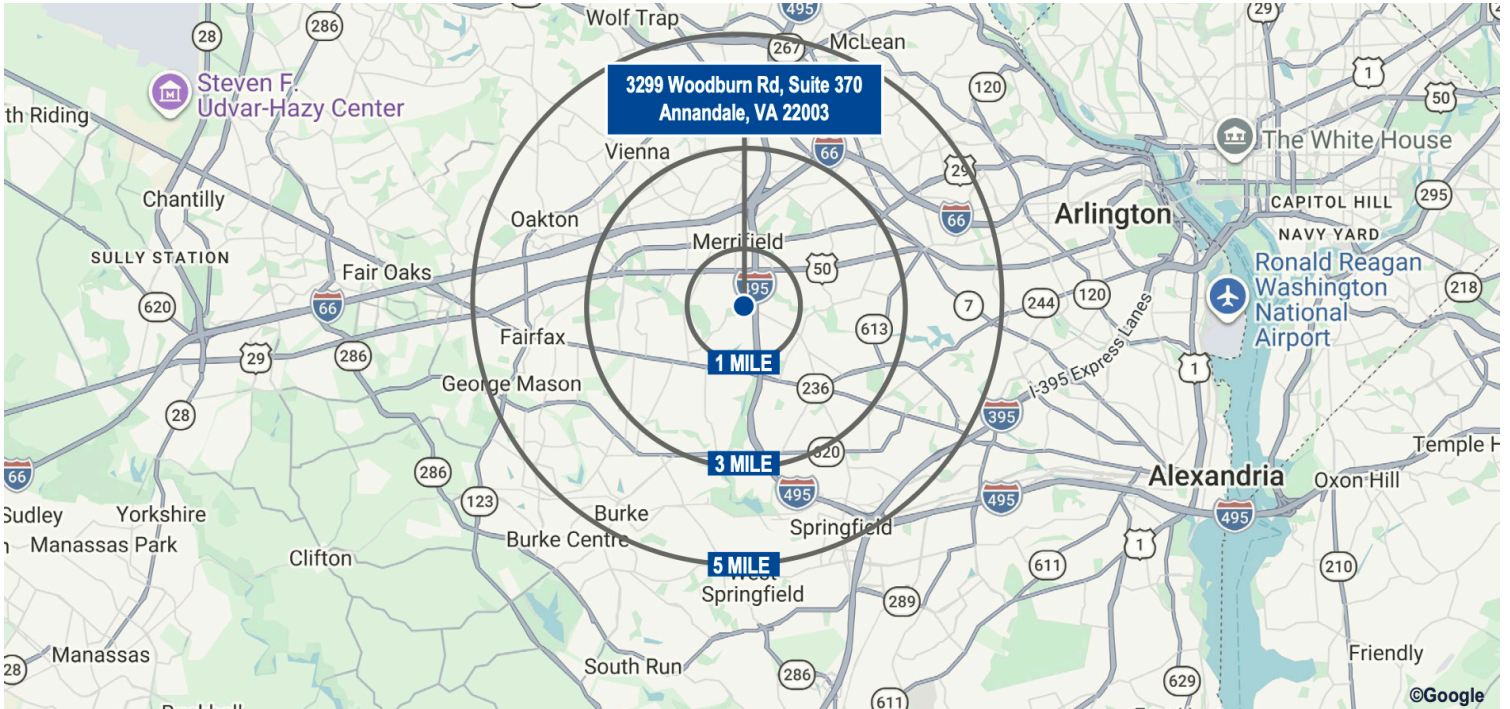
BOOSALIS PROPERTIES

REAL ESTATE INVESTMENT AND MANAGEMENT

UP TO 2,509 SQ. FT. AVAILABLE FOR LEASE

3299 WOODBURN ROAD, SUITE 370, ANNANDALE VA 22003

DEMOGRAPHICS



DEMOGRAPHICS 2025

	1 MILE	3 MILES	5 MILES
Population	10,348	139,292	393,064
Households	3,676	49,188	138,231
Avg. HH Income	\$165,523	\$161,633	\$168,628
Median Home Value	\$711,561	\$742,516	\$777,871
Owner Occupied	2,461	29,402	88,958
Renter Occupied	1,236	20,632	52,332
Employees	19,427	66,946	219,480
Businesses	3,377	9,553	26,645

FOR MORE INFORMATION

DOUG COMER

doug@boosalisproperties.com
703.494.7691 (o) | 202.500.1975 (c)

GEORGE BOOSALIS

President/Principal Broker
george@boosalisproperties.com
703.494.7691 (o)

BOOSALIS PROPERTIES

13562 Richmond Highway, Suite 100
Woodbridge, VA 22191
www.BoosalisProperties.com