

OFFICE BUILDING FOR LEASE



ONE DUPONT

1 Dupont Circle, NW, Washington, DC 20036

LEASING INFORMATION: 202.513.6700

ADAM BIBERAJ

202.513.6736
abiberaj@lpc.com

MERRILL TURNBULL

202.513.6713
mturnbull@lpc.com

ALEXANDER CHOLET

202.513.6716
acholet@lpc.com

LINCOLN
PROPERTY
COMPANY

lpcwashingtondc.com

ONE DUPONT

1 Dupont Circle, NW, Washington, DC 20036



PROPERTY HIGHLIGHTS

- Join the community at the National Center for Higher Education!
- Value opportunities with direct views overlooking Dupont Circle
- Tenant only conference center
- 1 / 1,700 sf parking ratio
- 1 block from Dupont Circle Metro Station (Red Line)
- New restaurant, The Admiral, onsite

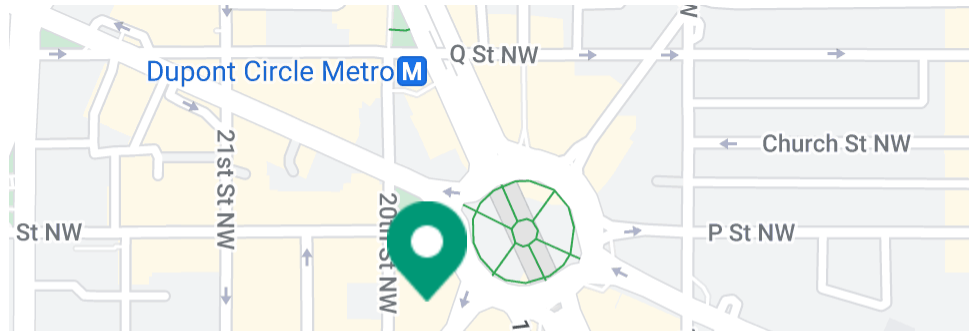
AVAILABILITIES

SF

LEASE RATE

DATE AVAILABLE

Suite 350	4,553 SF	\$44.00 FS	Available Immediately
Suite 405	3,306 SF	\$46.00 FS	Available Immediately
Suite 415	1,567 SF	Negotiable	Q1 2024
Suite 615	3,805 SF	\$46.00 FS	Available Immediately
Suite 615*	1,673 SF	Negotiable	Q1 2024
8th Floor	3,000 - 25,229 SF	\$48.00 FS	Available 4/24



ADAM BIBERAJ

202.513.6736
abiberaj@lpc.com

MERRILL TURNBULL

202.513.6713
mturnbull@lpc.com

ALEXANDER CHOLET

202.513.6716
acholet@lpc.com



**LINCOLN
PROPERTY
COMPANY**

ONE DUPONT

8TH FLOOR

1 Dupont Circle, NW, Washington, DC 20036



SUITE	SIZE	DESCRIPTION
■ 8th Floor	3,000 - 25,229 SF	Available 4/24

ADAM BIBERAJ

202.513.6736
abiberaj@lpc.com

MERRILL TURNBULL

202.513.6713
mturnbull@lpc.com

ALEXANDER CHOLET

202.513.6716
acholet@lpc.com



**LINCOLN
PROPERTY
COMPANY**

ONE DUPONT

SUITE 615*

1 Dupont Circle, NW, Washington, DC 20036



SUITE	SIZE	LEASE RATE	DESCRIPTION
■ Suite 615*	1,673 SF	Negotiable	Future Spec Suite

ADAM BIBERAJ

202.513.6736
abiberaj@lpc.com

MERRILL TURNBULL

202.513.6713
mturnbull@lpc.com

ALEXANDER CHOLET

202.513.6716
acholet@lpc.com

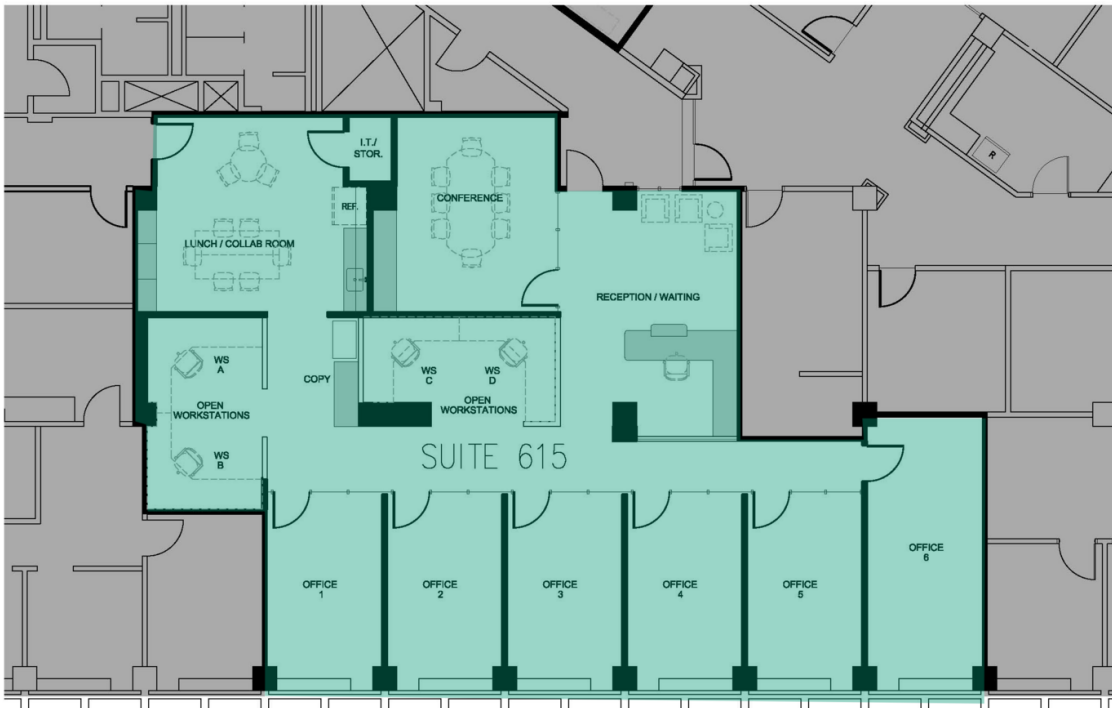


**LINCOLN
PROPERTY
COMPANY**

ONE DUPONT

SUITE 615

1 Dupont Circle, NW, Washington, DC 20036



20TH STREET

SUITE	SIZE	LEASE RATE	DESCRIPTION
■ Suite 615	3,805 SF	\$46.00 FS	Hypothetical Layout Available Immediately

ADAM BIBERAJ
202.513.6736
abiberaj@lpc.com

MERRILL TURNBULL
202.513.6713
mturnbull@lpc.com

ALEXANDER CHOLET
202.513.6716
acholet@lpc.com



ONE DUPONT

SUITE 405

1 Dupont Circle, NW, Washington, DC 20036



SUITE	SIZE	DESCRIPTION
■ Suite 405	3,306 SF	Available Immediately

ADAM BIBERAJ

202.513.6736
abiberaj@lpc.com

MERRILL TURNBULL

202.513.6713
mturnbull@lpc.com

ALEXANDER CHOLET

202.513.6716
acholet@lpc.com

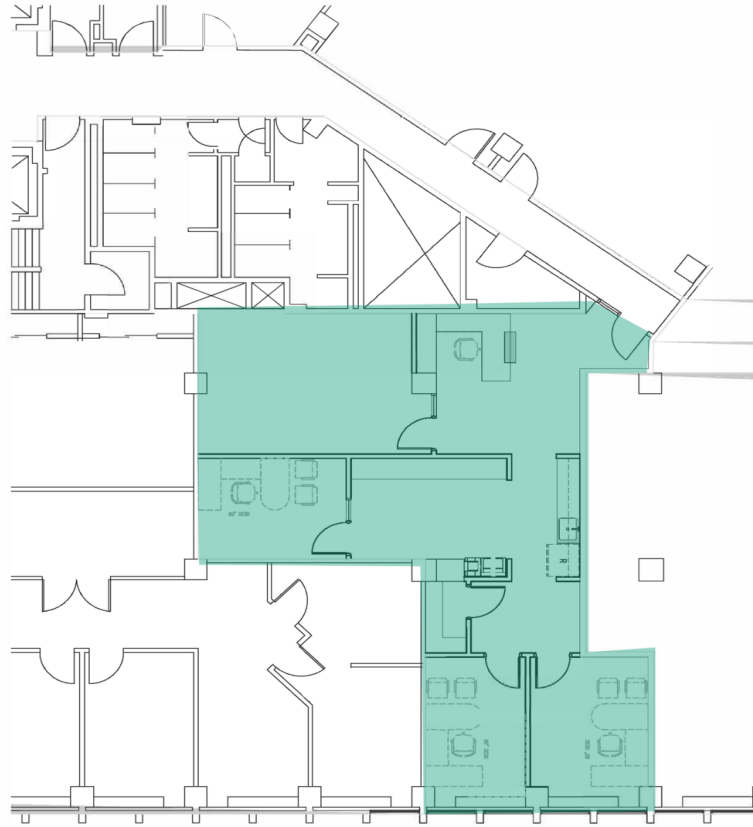


**LINCOLN
PROPERTY
COMPANY**

ONE DUPONT

SUITE 415

1 Dupont Circle, NW, Washington, DC 20036



20th Street

SUITE	SIZE	DESCRIPTION
■ Suite 415	1,567 SF	Future Spec Suite

ADAM BIBERAJ

202.513.6736
abiberaj@lpc.com

MERRILL TURNBULL

202.513.6713
mturnbull@lpc.com

ALEXANDER CHOLET

202.513.6716
acholet@lpc.com



**LINCOLN
PROPERTY
COMPANY**

ONE DUPONT

SUITE 350

1 Dupont Circle, NW, Washington, DC 20036



SUITE	SIZE	LEASE RATE	DESCRIPTION
■ Suite 350	4,553 SF	\$44.00 FS	Available Immediately

ADAM BIBERAJ
202.513.6736
abiberaj@lpc.com

MERRILL TURNBULL
202.513.6713
mturnbull@lpc.com

ALEXANDER CHOLET
202.513.6716
acholet@lpc.com

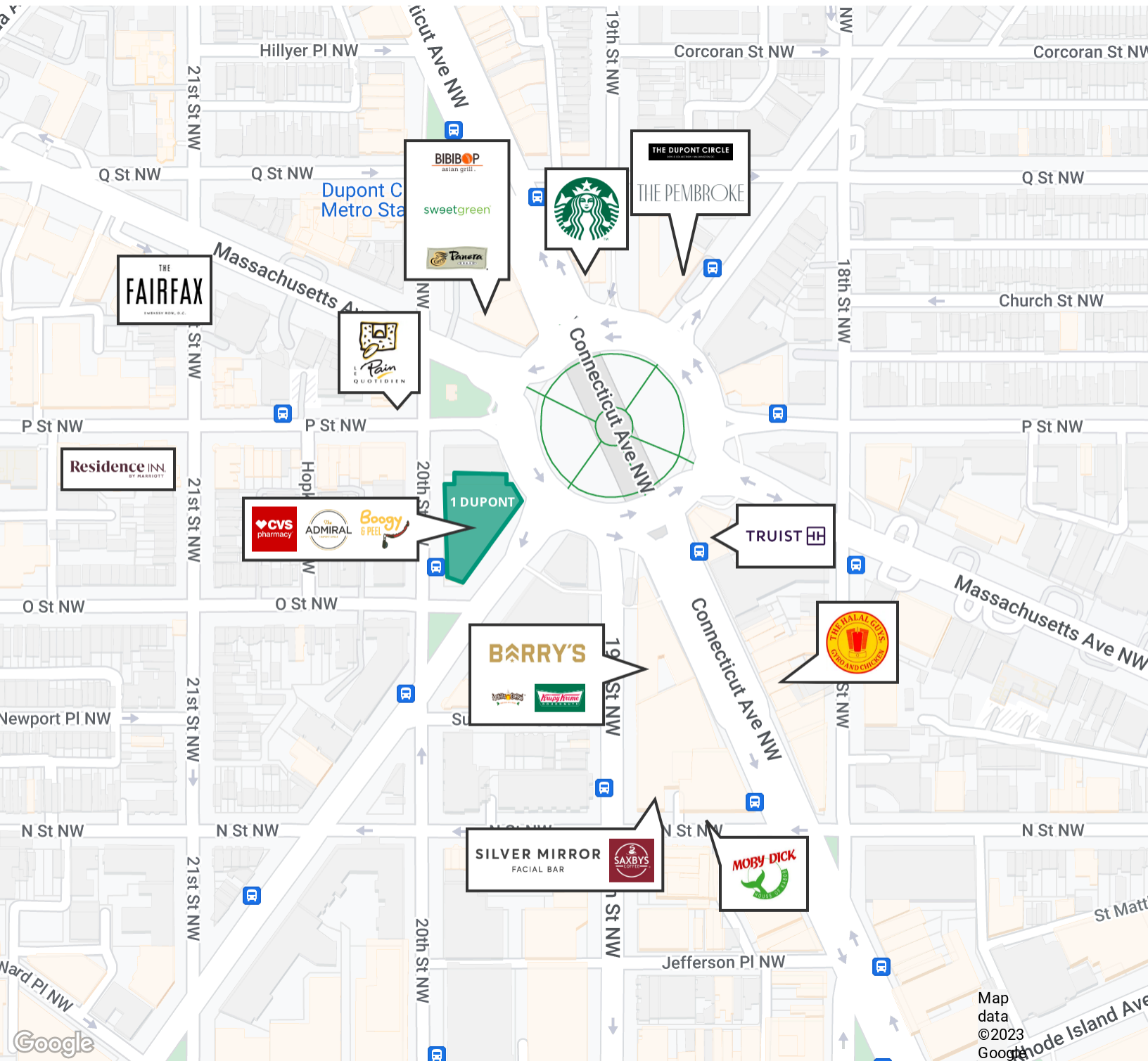


**LINCOLN
PROPERTY
COMPANY**

ONE DUPONT

DUPONT AMENITIES

1 Dupont Circle, NW, Washington, DC 20036



ADAM BIBERAJ

202.513.6736
abiberaj@lpc.com

MERRILL TURNBULL

202.513.6713
mturnbull@lpc.com

ALEXANDER CHOLET

202.513.6716
acholet@lpc.com



ONE DUPONT

1 Dupont Circle, NW, Washington, DC 20036

ADDITIONAL PHOTOS



ADAM BIBERAJ

202.513.6736
abiberaj@lpc.com

MERRILL TURNBULL

202.513.6713
mturnbull@lpc.com

ALEXANDER CHOLET

202.513.6716
acholet@lpc.com



**LINCOLN
PROPERTY
COMPANY**



ONE DUPONT

1 Dupont Circle, NW, Washington, DC 20036

LEASING INFORMATION: 202.513.6700

ADAM BIBERAJ

202.513.6736
abiberaj@lpc.com

MERRILL TURNBULL

202.513.6713
mturnbull@lpc.com

ALEXANDER CHOLET

202.513.6716
acholet@lpc.com

**LINCOLN
PROPERTY
COMPANY**

lpcwashingtondc.com