

18226 Ventura Blvd

Tarzana , CA 91356

Tarzana Med/Off Space Available

PROPERTY HIGHLIGHTS:

- High Identity Ventura Blvd Location In Tarzana
- Competitive Leasing Rates
- Flexible HVAC Hours
- Walking Distance To Shops, Restaurants, And Banks
- Ample Street Parking And Underground Parking
- Professional Management
- Major Building Renovations Underway To Include Exterior, Common Areas And Restrooms



Leasing Now



PACIFIC PARTNERS
COMMERCIAL, INC.

23901 Calabasas Rd., Suite 2024
Calabasas, CA 91302
Office 818.862.2848

Bruce A. Frasco

Senior Vice President
Direct: 818.298.2900
Bruce@pacificpartnerscre.com
CA BRE: 00639403

Michelle Buckner

Vice President
Direct: 818.284-4020
michelle@pacificpartnerscre.com
CA BRE: 01957319

The information herein has been furnished from sources which we deem reliable, but has not been verified by Pacific Partners Commercial, Inc. or its agents and for which we assume no liability. This marketing material is to be used for conceptual purposes only. All measurements and numerical data are approximate and to be verified by the prospective buyer.

18226 Ventura Blvd

Tarzana , CA 91356

Suite Availabilities & Rates

| LEASE RATE | |
|----------------------|-----------------------|
| Medical | \$6.00 PSF (FSG) |
| Parking | 3/1000 \$45 /Month |
| 18226 Ventura | Square Footage |
| Suite 102 | 3,581 SF |



Bruce A. Frasco
Senior Vice President
Direct: 818.298.2900
Bruce@pacificpartnerscre.com
CA BRE: 00639403

Michelle Buckner
Vice President
Direct: 818.284-4020
michelle@pacificpartnerscre.com
CA BRE: 01957319

PACIFIC PARTNERS COMMERCIAL
23901 Calabasas Rd., Suite 2024
Calabasas, CA 91302
Office 818.862.2848

18226 Ventura Blvd

Tarzana, CA 91356

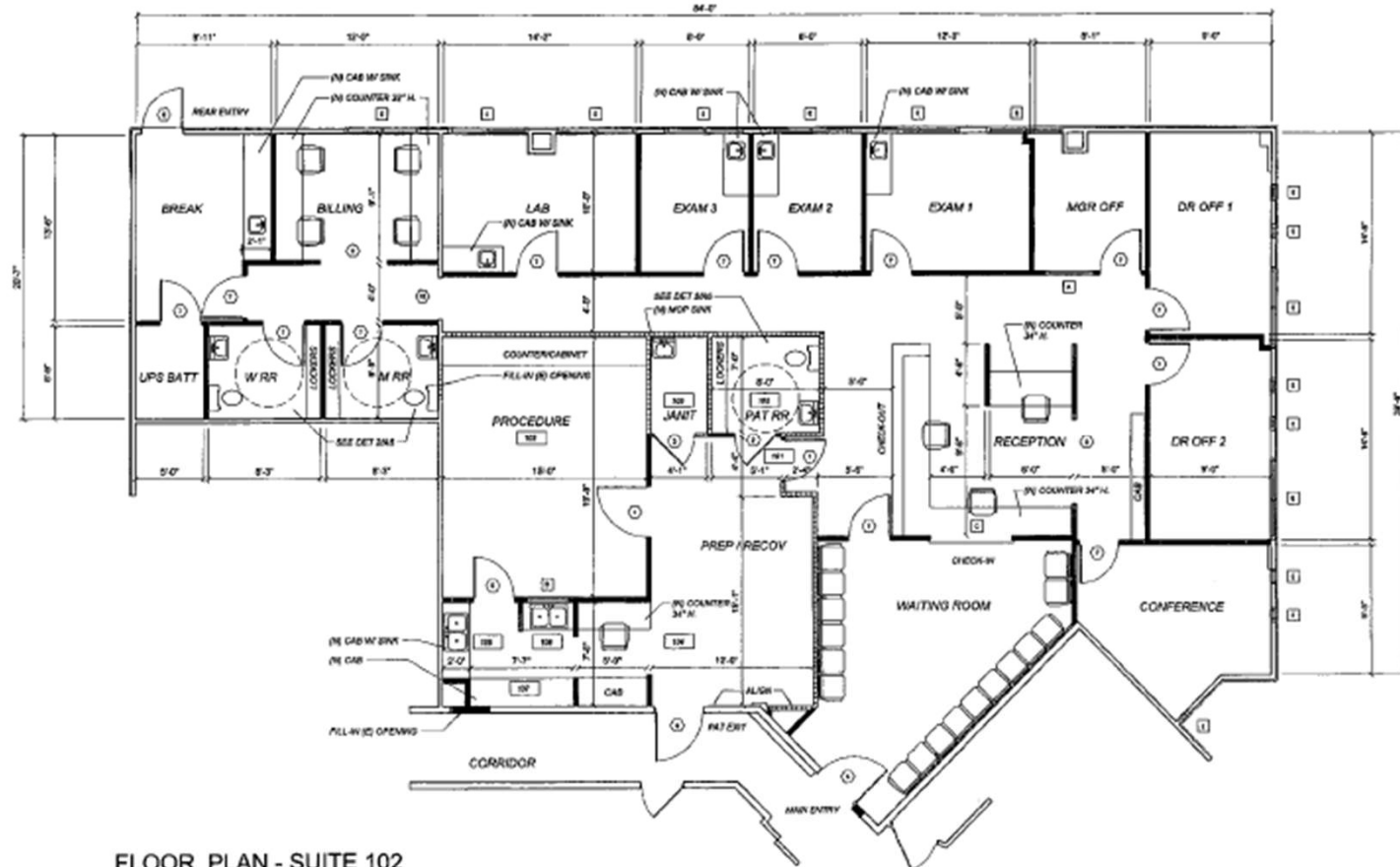
Suite # 102

3,581 SF

Rate

\$6.00 FSG

Fully functional surgery center



FLOOR PLAN - SUITE 102

SCALE: 1/4" = 1'-0"

Plan may not be accurate or to scale.



Bruce A. Frasco

Senior Vice President

Direct: 818.298.2900

Bruce@pacificpartnerscre.com

CA BRE: 00639403

Michelle Buckner

Vice President

Direct: 818.284.4020

michelle@pacificpartnerscre.com

CA BRE: 01957319

PACIFIC PARTNERS COMMERCIAL

23901 Calabasas Rd., Suite 2024

Calabasas, CA 91302

Office 818.862.2848

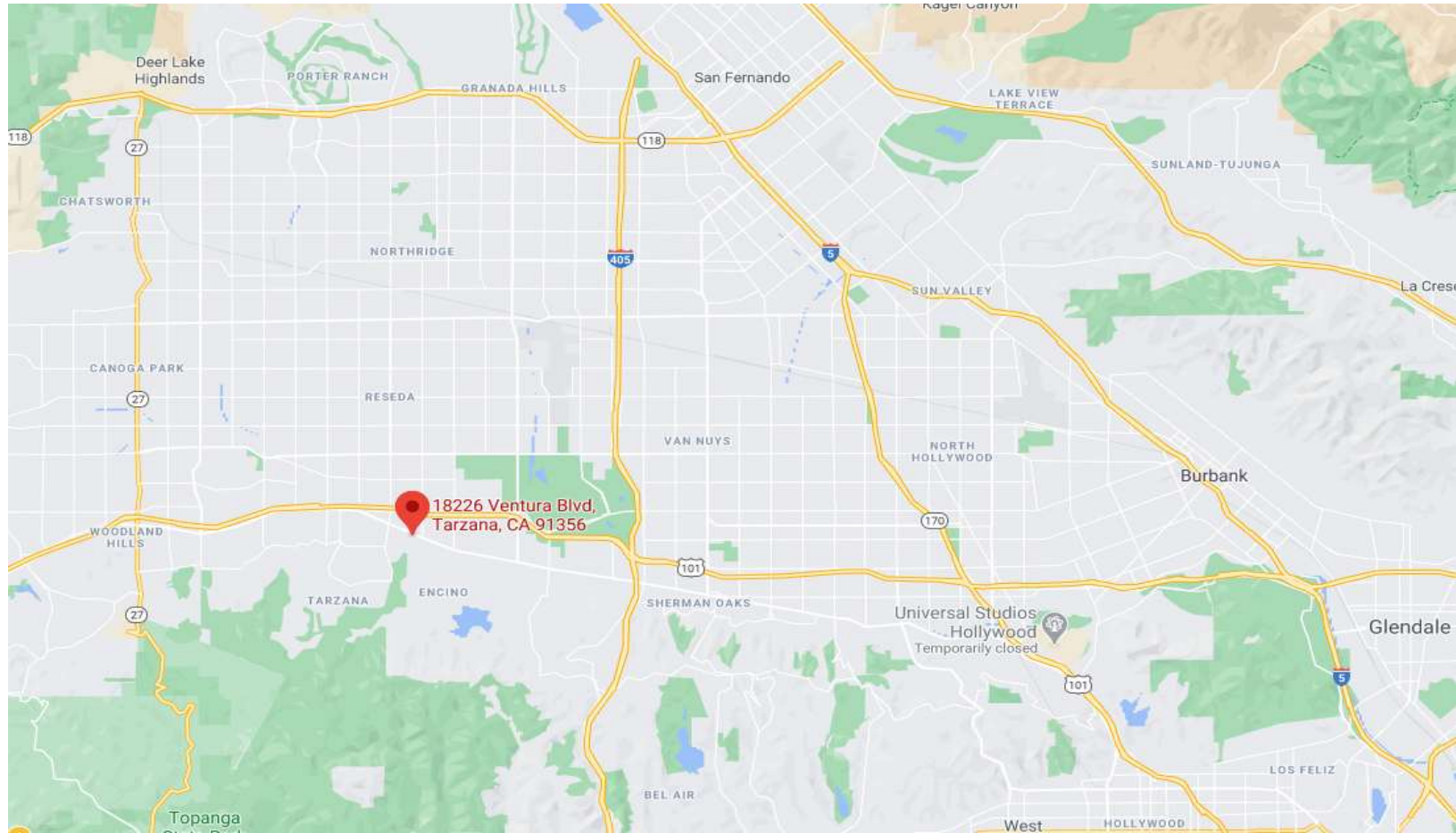
18226 Ventura Blvd

Tarzana , CA 91356



Property VICINITY

- Ventura Blvd
Restaurants & Shops
- Office Depot
- <1 mile To
The 101
Freeway
Access
North & South



Tarzana ,Ca ▶▶



Bruce A. Frasco

Senior Vice President

Direct: 818.298.2900

Bruce@pacificpartnerscre.com

CA BRE: 00639403

Michelle Buckner

Vice President

Direct: 818.284-4020

michelle@pacificpartnerscre.com

CA BRE: 01957319

Pacific Partners Commercial

23901 Calabasas Rd., Suite 2024

Calabasas, CA 91302

info@pacificpartnerscre.com

Office 818.862.2848

