

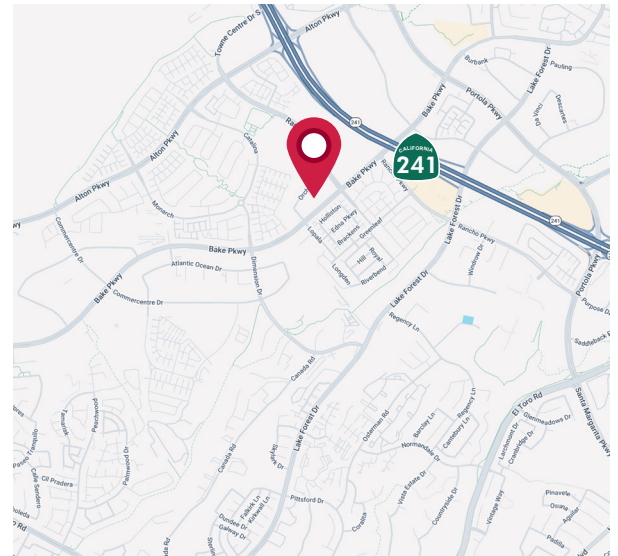
±13,784 OFFICE SUITE FOR LEASE ORCHARD TECHNOLOGY PARK

6 ORCHARD RD, SUITE 100/150 | LAKE FOREST, CA



LISTING DATA

- Approximately 13,784 SF on the First Floor
- Orchard Technology Park
- Part of a 2 Story Office Building: 27,099 SF Total
- Elevator Served
- Ample 4:1,000 Surface Free Parking
- Turnkey Office Space
- 15 Private Offices, 2 Conference Rooms, 2 Break Room, 2 Open Areas
- Close Proximity to Numerous Retail Amenities
- Easy Access to the 241 Hwy, Bake Pkwy, and Alton Pkwy
- Call to show



For more information, contact:

BJ FELL
Senior Vice President
CalDRE: 01929179
(949) 790-3144
bfell@leeirvine.com

MARK JERUE
Senior Vice President
CalDRE: 01073399
(949) 790-3121
mjerue@leeirvine.com

CRAIG FITTERER
Senior Vice President
CalDRE: 01246929
(949) 790-3123
cfitterer@leeirvine.com

All information furnished regarding property for sale, rental or financing is from sources deemed reliable, but no warranty or representation is made to the accuracy thereof and same is submitted to errors, omissions, change of price, rental or other conditions prior to sale, lease or financing or withdrawal without notice. No liability of any kind is to be imposed on the broker herein.

±13,784 OFFICE SUITE FOR LEASE

ORCHARD TECHNOLOGY PARK

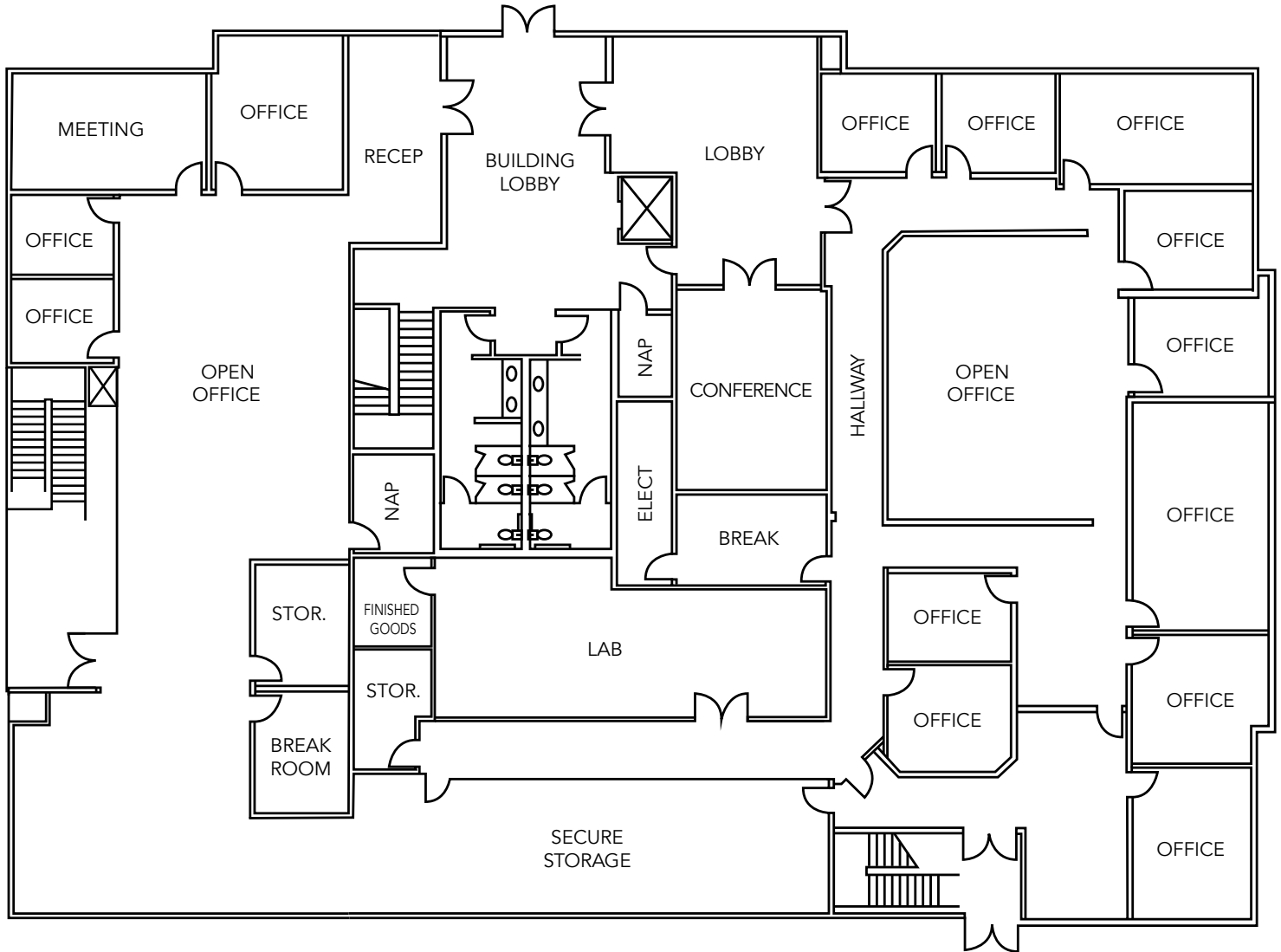
6 ORCHARD RD, SUITE 100/150 | LAKE FOREST, CA



COMMERCIAL REAL ESTATE SERVICES

NOT A PART

FLOOR PLAN



For more information, contact:

BJ FELL
Senior Vice President
CalDRE: 01929179
(949) 790-3144
bfell@leeirvine.com

MARK JERUE
Senior Vice President
CalDRE: 01073399
(949) 790-3121
mjerue@leeirvine.com

CRAIG FITTERER
Senior Vice President
CalDRE: 01246929
(949) 790-3123
cfitterer@leeirvine.com

All information furnished regarding property for sale, rental or financing is from sources deemed reliable, but no warranty or representation is made to the accuracy thereof and same is submitted to errors, omissions, change of price, rental or other conditions prior to sale, lease or financing or withdrawal without notice. No liability of any kind is to be imposed on the broker herein.