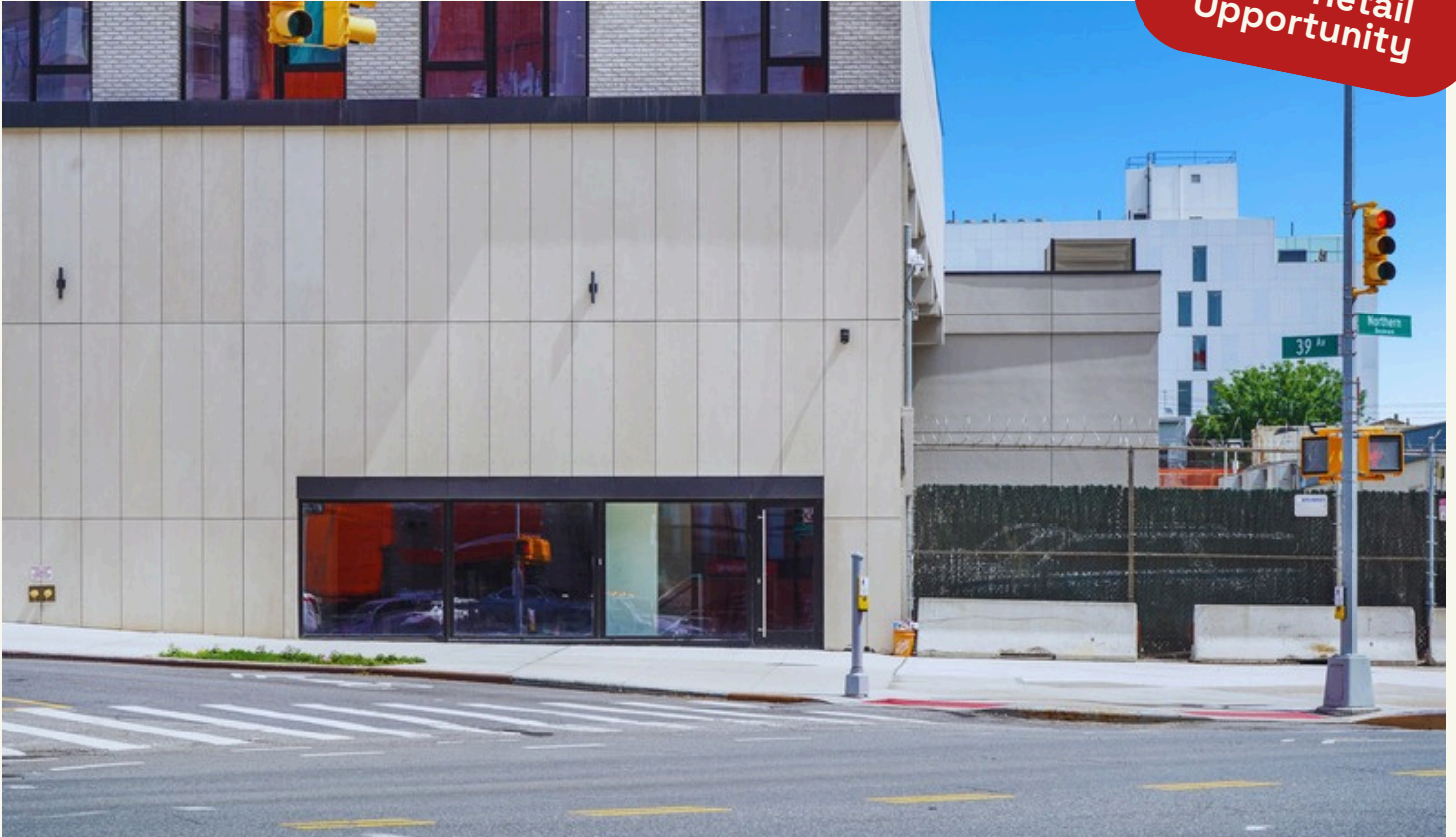


VERADA

# 38-27 32<sup>nd</sup> Street

Long Island City

Prime Retail  
Opportunity



38-27 32nd Street offers 3,354 SF of garden-level retail space in the heart of LIC.

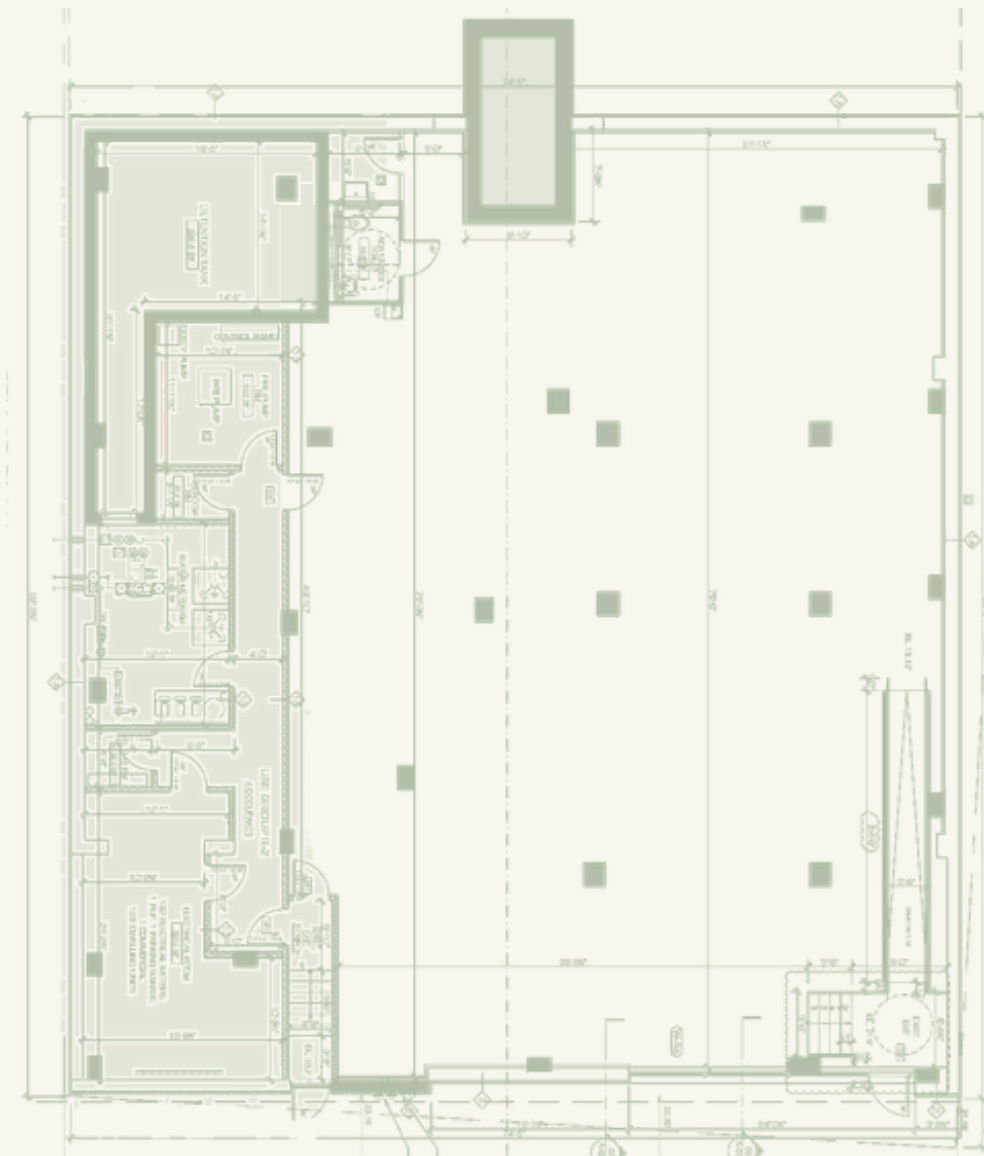
The space features 9 FT ceilings, 20 FT of frontage, and 1 ADA bathroom already in place.

The space is divisible and can be configured to suit a range of retail or service concepts.

Ownership is open to build out.

Steps from the N/W trains at 39th Avenue and the E/F/M/R/W trains at 36th Street.

[View Listing >](#)



**Square Footage** Total: 3,354 SF

---

**Level** Garden Level

---

**Divisible** Yes

---

**Ceiling Heights** 9 FT

---

**Total Frontage** 20 FT

---

**Features** 1 ADA Bathroom in Place

---

**Market Concessions** Ownership will provide market concession for qualified tenant

---

[View Listing >](#)



[View Listing >](#)



**Video Tour**

**Neighborhood Description:**

- Fast growing mixed use corridor with new residential towers and increasing commercial density on every block.
- Minutes from Gantry Plaza State Park and Hunter's Point South Park with Manhattan skyline views.
- Growing restaurant and retail scene along Northern Boulevard and Queens Boulevard.
- Steps from the 7, E, F, M, R, N, and W trains. One express stop to Midtown. NYC Ferry and Citi Bike nearby.

Nate Mallon  
[nm@veradaretail.com](mailto:nm@veradaretail.com)  
860-416-7288

Brendan Thrapp  
[bt@veradaretail.com](mailto:bt@veradaretail.com)  
201-787-9679

**VERADA**  
veradaretail.com