

FOR SUBLEASE  
7200 GARDNER STREET  
WINTER PARK, FL 32792



## PROPERTY HIGHLIGHTS

- Available SF: 5,000 SF (Additional Outdoor Storage Available)
- Office SF: 200 SF
- Clear Height: 12'
- Parking: 9 car parking spaces
- Location: Located in the heart of Winter Park, 7200 Gardner Street offers convenient access to several major thoroughfares, making it an ideal spot for both residential and commercial activity. The property sits just minutes from State Road 436 (Semoran Boulevard), a key north-south corridor connecting to the Orlando International Airport and Interstate 4. Nearby, University Boulevard and Aloma Avenue (State Road 426) provide direct routes to the University of Central Florida, downtown Winter Park, and other surrounding neighborhoods.

**Sublease Rent:** \$5,520.83/month plus sales tax

### Leasing Contacts:

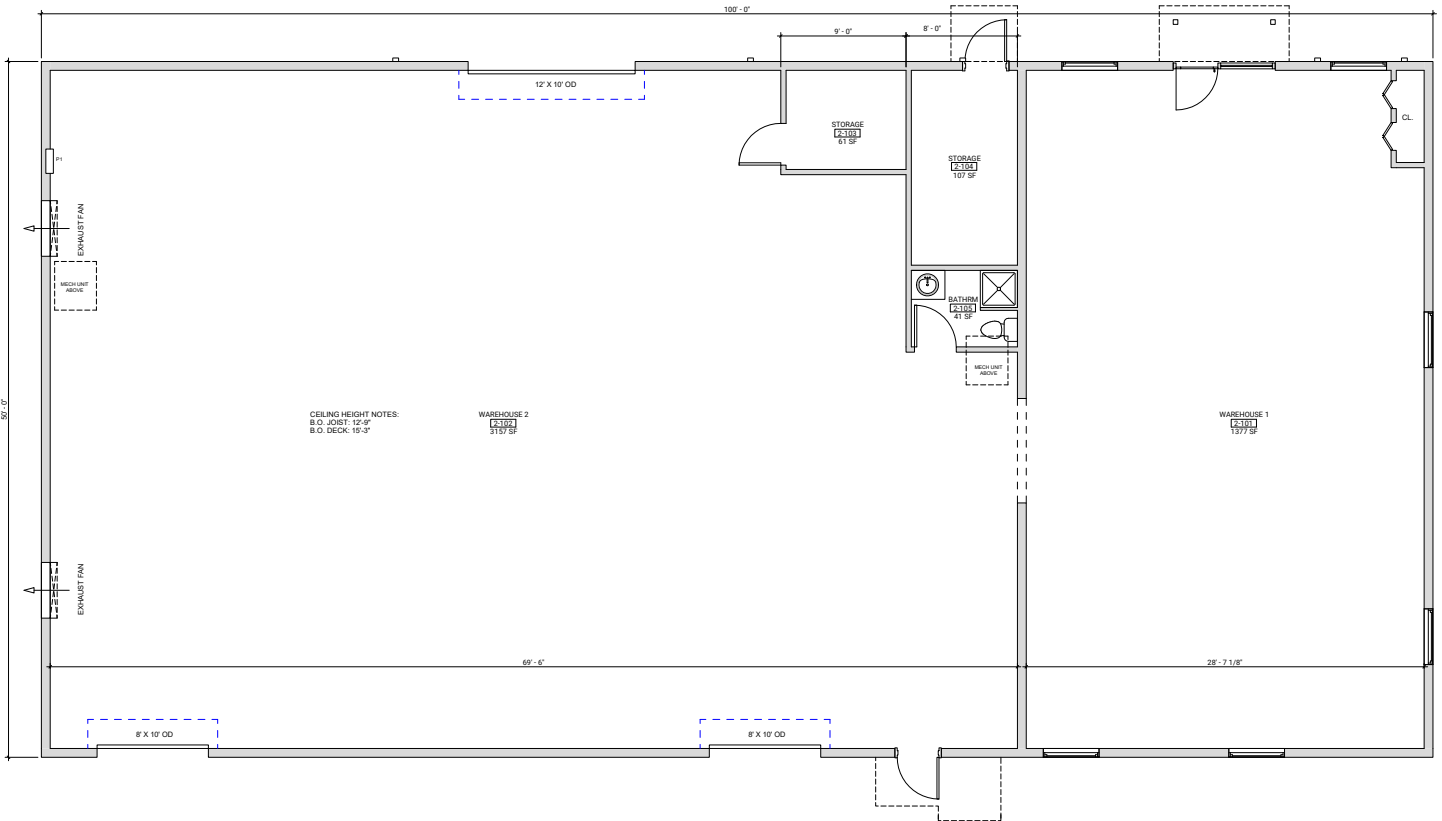
Ryan Griffith  
Senior Vice President/Principal  
rgriffith@lee-associates.com  
D 321.281.8512

Christopher "CJ" Griffith, SIOR  
Vice President  
cgriffith@lee-associates.com  
D 321.281.8508



**FOR SUBLEASE**  
**7200 GARDNER STREET**  
WINTER PARK, FL 32792

**FLOORPLAN**



1 BUILDING 2 - FLOOR PLAN  
1/4" = 1'-0"

AREA NOTES  
TOTAL BUILDING AREA - 5,000 SF

**Leasing Contacts:**

Ryan Griffith  
Senior Vice President/Principal  
rgriffith@lee-associates.com  
D 321.281.8512

Christopher "CJ" Griffith, SIOR  
Vice President  
cgriffith@lee-associates.com  
D 321.281.8508

All information furnished regarding property for sale, rental or financing is from sources deemed reliable, but no warranty or representation is made to the accuracy thereof and same is submitted to errors, omissions, change of price, rental or other conditions prior to sale, lease or financing or withdrawal without notice. No liability of any kind is to be imposed on the broker herein.