

MEDICAL OFFICE SUITE

FOR SUBLEASE

462 Stevens Ave | Solana Beach



Suite 310
1,269 RSF

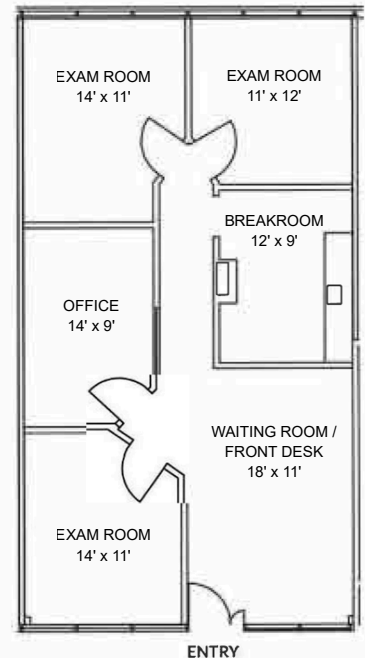
Sublease
Until 5/31/2028

Prime Location
Ideally located off I-5 between
the 101

Turnkey Opportunity
Ideal for medical, wellness, or
professional office use.

Premier Access
Building is close to local retail
amenities and minutes from the
California beach line

Located
In highly desirable coastal Solana
Beach surrounded by established
medical and professional tenants



Medical Real Estate Isn't Just What We Do—it's All We Do.

Kellie Hill Galligan
LIC #001923075
858-461-8776
Kellie@MedWestRealty.com

Andrea Firtel
LIC#02153481
(858) 337-8262
Andrea@MedWestRealty.com