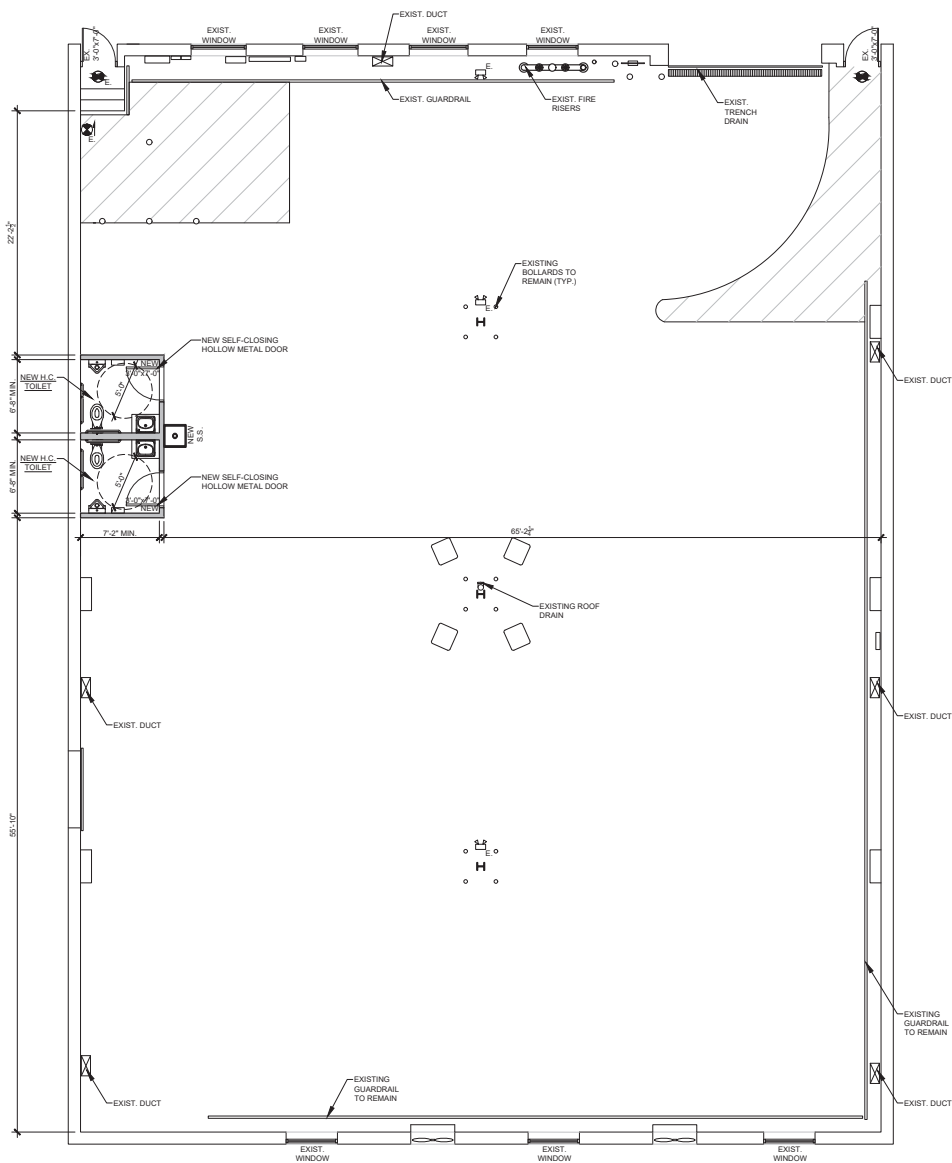


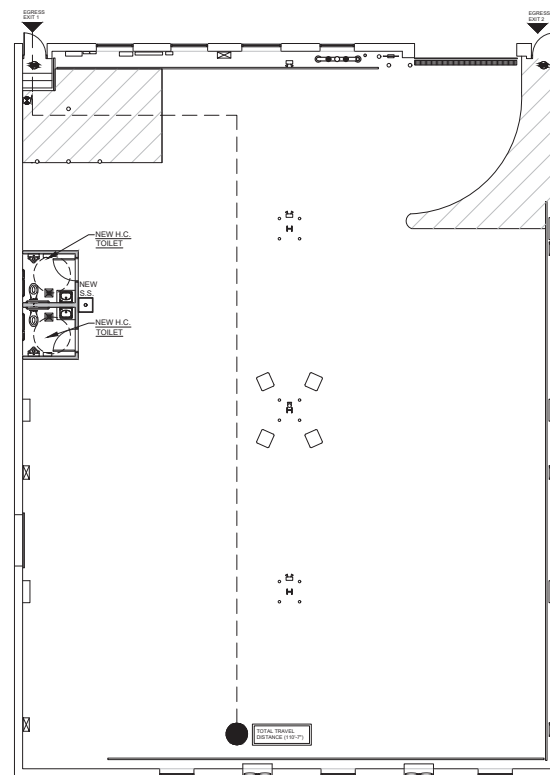
FLOOR PLAN LEGEND

-  NEW PARTITION CONSTRUCTION
-  PARTITION TO BE REMOVED
-  EXISTING PARTITION TO REMAIN



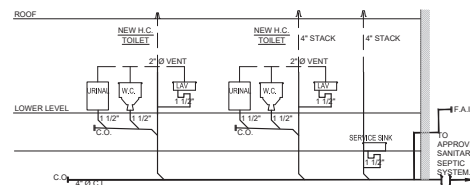
PROPOSED FLOOR PLAN

SCALE: 3/16" = 1'-0"



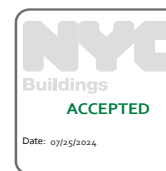
EGRESS PLAN

SCALE: 1/8" = 1'-0"



PLUMBING RISER DIAGRAM

SCALE: N.T.S.



THESE PLANS ARE AN INSTRUMENT OF SERVICE AND OR OF THE ARCHITECT'S IMPROVEMENTS WILL BE PROSECUTED.

#	DATE	DESCRIPTION

PROPOSED ALTERATIONS

CHARTER COMMUNICA

212 28TH STREET, BROOKLYN, NY 11232

PROPOSED FLOOR PLAN, EGRE & PLUMBING RISER DIAGR

DATE: 06-04-21

PROJECT: 24022












OWNER: J.P.

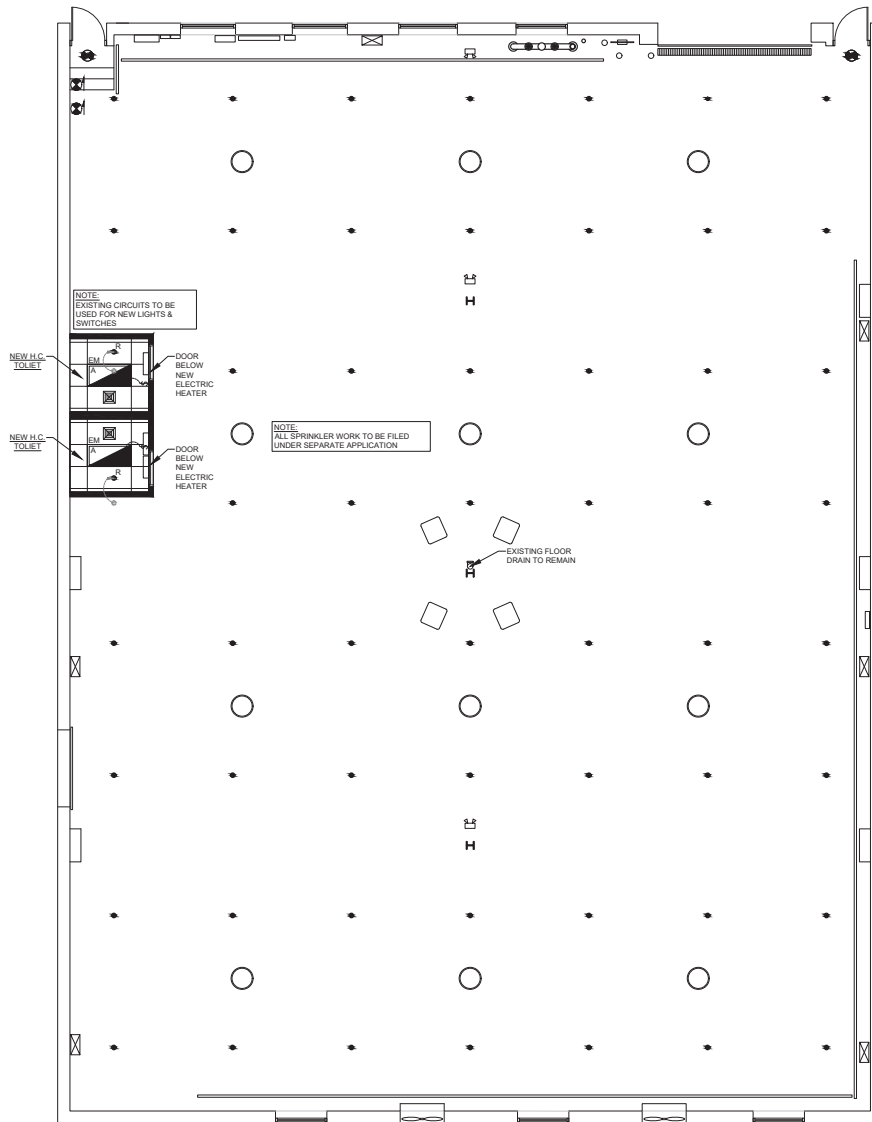
CREATED: R.C.

REGISTERED ARCHITECT STATE OF NEW YORK

SCALE: A-10(

CEILING PLAN LEGE

-  = EXPOSED CEILING.
-  = SUSPENDED 2'-0"x4'-0" ACOI CEILING TILE. CEILING HEIGHT MATCH EXISTING.
-  = APPROVED TYPE EXIT SIGN
-  = 2'-0"x4'-0" WHITE INTEGRATE PANEL TROFFER LIGHT FIXTURE LUMENS, 4000K BRIGHT WHITE MAKE: THE HOME DEPOT OR EQUAL.
-  = EXISTING LIGHTING TO REMAIN
-  = EXISTING SPRINKLER HEAD
-  = RELOCATED SPRINKLER HEAD MODIFIED ACCORDING.
-  = NEW ELECTRIC HEATER AS-BY OWNER
-  = NEW LIGHT SWITCH
-  = EXISTING GAS FRIED HEATER
-  = NEW 150 CFM EXHAUST FAN



 **PROPOSED RCP**

SCALE: 3/16" = 1'-0"



THESE PLANS ARE AN INSTRUMENT OF SERVICE AND OR OF THE ARCHITECT. IMPROVEMENTS WILL BE PROSECUTED.

#	DATE	DESCRIPTION
07/25/24	ISSUED FOR DOB REVIEW	
08/04/24	ISSUED FOR CLIENT REVIEW	

PROPOSED ALTERATIONS

CHARTER COMMUNICA

212 28TH STREET,
BROOKLYN, NY 11232

ISSUING TITLE

PROPOSED RCF

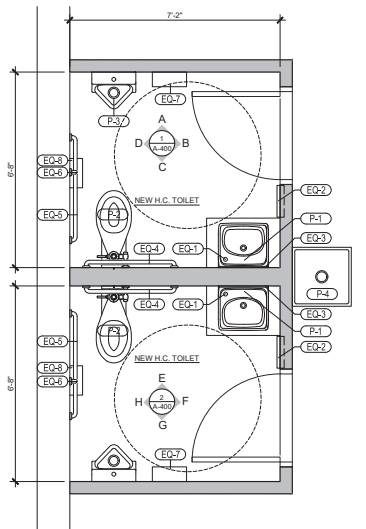


DATE: 06-04-24
PROJECT: 24022
DRAWING TITLE: J.P.
CREATED BY: R.C.
CHECKED BY: A-200



DOB# B01078523-S1

ISSUING TITLE



NEW H.C. TOILET
SCALE: 1/2" = 1'-0"

CESSORY EQUIPMENT & FINISHING FIXTURE SCHEDULE

- 1) CONTURA SERIES SURFACE MOUNTED SOAP DISPENSER BY BOBBIK B-4112
 - 2) SURFACE MOUNTED ROLL-PAAPER TOWEL DISPENSER BY BOBBIK B-2693
 - 3) TILT MIRROR WITH STAINLESS STEEL FRAME BY BOBBIK B-293 1630 OR APPROVED EQUAL
 - 4) 1 1/2" DIA. x 36" ST. STEEL GRAB BAR BY BOBBIK B-4899.99
 - 5) 1 1/2" DIA. x 42" ST. STEEL GRAB BAR BY BOBBIK B-4899.99
 - 6) 1 1/2" DIA. x 18" ST. STEEL VERTICAL GRAB BAR BY BOBBIK B-4899.99
 - 7) CONTURA SERIES SURFACE MOUNTED WASTE RECEPTACLE BY BOBBIK B-5111 OR APPROVED EQUAL
 - 8) STAINLESS STEEL JUMBO-ROLL TOILET TISSUE DISPENSER BY BOBBIK B-17545 OR APPROVED EQUAL
- (P-1) AMERICAN STANDARD "LUCERNE" LAVATORY MODEL # 636.411.001. FAUCET MODEL# 1001.170. WREST BLADE HANDLES, POP-UP DRAIN, ANGLE SUPPLIES, SUPPORT & P-TRAP
 - (P-2) AMERICAN STANDARD WATER CLOSET #P WALL ELONGATED FLUSH VALVE TOILET MODEL# 2700.20 IN SEAT. SENSE 50 W/HEAVY DUTY SOLID PLASTIC W/ OPEN FRONT ELONGATED W/ STAINLESS STEEL CHROME FINISH
 - (P-3) AMERICAN STANDARD URINAL, THERMOBOOK WALL HUNG
 - (P-4) AMERICAN STANDARD, HARBOR SERVICE SINK #DAMELED CAST IRON, 766.036, FAUCET #VAL235 EXPOSED VIBE WALL MOUNT, UTILITY FAUCET, TRAP STANDARD 7766.030 CAST IRON "P" TRAP STANDARD TO WALL & STRAINER

ACCESSORIES NOTE:
NOTE: G.C. SHALL PROVIDE FIRE RETARDANT WOOD BLOCKING TO ADEQUATELY SUPPORT THE NEW TOILET FIXTURES AND ACCESSORIES

#P24" STAINLESS STEEL FRAMED MIRROR ABOVE LAV. MOUNTED WITH THE BOTTOM EDGE OF THE REFLECTING SURFACE NO HIGHER THAN 40" A.F.F., BY AMERICAN SPECIALTIES INC.

PROVIDE DUAL TWIN HIDE A ROLL TOILET PAPER HOLDER, ONE AT EACH WATER CLOSET LOCATION, INSTALLED TO A HEIGHT OF 19" ON CENTER A.F.F., BY AMERICAN SPECIALTIES INC.

ONE LIQUID SOAP DISPENSER TO BE PROVIDED ABOVE EACH LAV. (ALL TOILETS) BY AMERICAN SPECIALTIES INC.

PROVIDE SURFACE MOUNTED AND RECESSED S/S PAPER TOWEL DISPENSER AND DISPOSAL UNIT INSTALLED TO 40" MAX. TO THE HIGHEST OPERABLE PART OF THE DISPENSER, BY AMERICAN SPECIALTIES INC. - SEE PLAN FOR LOCATION

PROVIDE 2 PROM METAL COAT HOOK AT INSIDE OF EACH STALL DOOR.

PROVIDE HANDICAPPED GRAB BARS AT EACH H.C. STALL. SEE GRAB BAR NOTES AND PLAN ABOVE.

BRILLE SIGNAGE:
PROVIDE #48" BRILLE SAFETY RIGID PLASTIC SIGNS BY BRADY OR APPROVED EQUAL, AT NEW AND EXISTING OFFICE AND WAREHOUSE TOILETS, LOCATION AND EIGHT INSTALLATION TO COMPLY WITH A.D.A. GUIDELINES AND ICC / ANCI CODES.

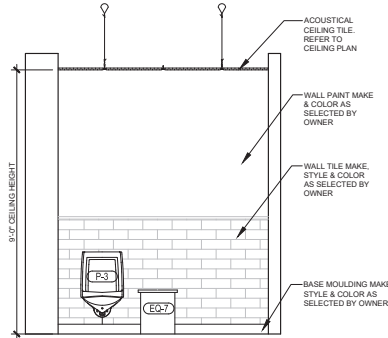
HANDICAPPED TOILET STALL

GRAB BAR NOTES (IFER CODE) - AT H.C. WATER CLOSET

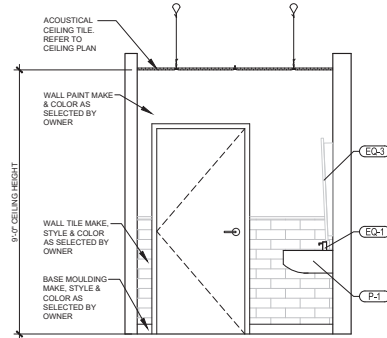
1. SHALL BE 1-1/2" O.D.
2. SHALL HAVE 1/2" - 2" CLEARANCE BETWEEN RAIL AND WALL.
3. SHALL BE PARALLEL TO THE FLOOR.
4. SHALL BE CAPABLE OF BEARING A DEAD LOAD OF 300 LBS. WITHOUT PERMANENT DEFLECTION
5. SHALL BE NON-SLIP

A.D.A. COMPLIANCE WORK (AT NEW H.C. TOILET)

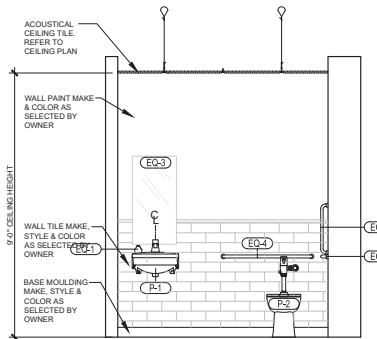
1. PROVIDE NEW WATER CLOSETS AT ALL TOILETS INSTALLED AT A HEIGHT OF 17" -19" MEASURED TO TOP OF TOILET SEAT A.F.F. SEATS SHALL NOT BE SPRUNG TO RETURN TO A LIFTED POSITION.
2. INSTALL NEW WALL HUNG URINAL TOILET WITH AN ELONGATED RIM AT A HEIGHT OF 17" A.F.F. AND THE FLUSH CONTROL TO BE MOUNTED AT 44" MAXIMUM A.F.F.
3. PROVIDE NEW SINK INSTALLED AT A HEIGHT OF 28" MINIMUM CLEAR FROM FINISHED FLOOR TO BOTTOM OR SINK APRON - AT ALL TOILETS
4. PROVIDE INSULATION AT EXPOSED HOT WATER AND DRAIN PIPES TO PROTECT AGAINST CONTACT UNDER EACH HANDICAP SINK - AT WAREHOUSE TOILETS



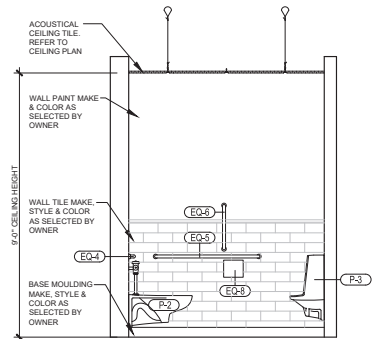
ELEVATION 'A'
SCALE: 1/2" = 1'-0"



ELEVATION 'B'
SCALE: 1/2" = 1'-0"



ELEVATION 'C'
SCALE: 1/2" = 1'-0"



ELEVATION 'D'
SCALE: 1/2" = 1'-0"



18 Broadway (Phone 110)
Brooklyn, NY 11201
631-264-9191 FAX 631-264-4
631-264-9191

THESE PLANS ARE AN INSTRUMENT OF SERVICE AND/OR OF THE ARCHITECT'S IMPAIRMENTS WILL BE PROSECUTED

NO.	DATE	DESCRIPTION
1	07/25/2024	ISSUED FOR DOB REVIEW
2	07/25/2024	ISSUED FOR CLIENT REVIEW

PROPOSED ALTERATIONS

CHARTER COMMUNICA

212 28TH STREET,
BROOKLYN, NY 11232

PROPOSED INTERIOR ELEVATIONS

DATE: 06-04-24
PROJECT: 24022
DRAWN BY: J.P.
CHECKED BY: R.C.
SCALE: 1/4" = 1'-0"
A-401



DOB# B01078523-S1

