



Colliers

For Lease

Southpark Industrial Park

5050-5200 Commerce Road
Richmond, VA

Park Features

- Located in close proximity to I-95 and the Port of Richmond
- Visible from I-95
- Dual fiber feeds serviced by Comcast and Verizon Fios

Southpark II - Suite 5056

- 7,126 SF flex space available
- 1 covered dock
- Clear height is 15'

Contact us:

Wood Thornton

Senior Vice President
+1 804 267 7221
wood.thornton@colliers.com

Jimmy Martin

Vice President
+1 804 267 7218
jimmy.martin@colliers.com

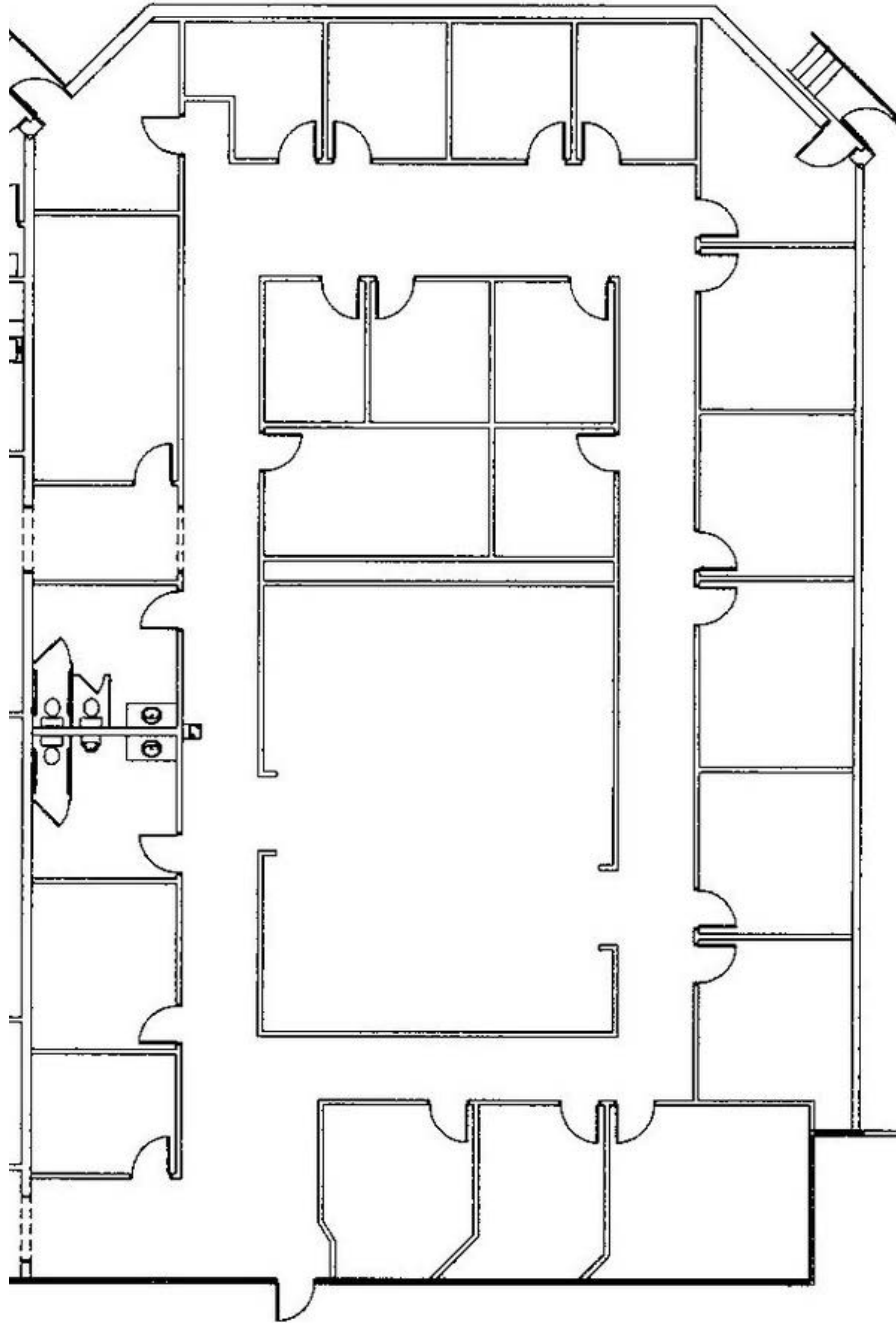
Colliers International

2221 Edward Holland Dr
Suite 600 | Richmond, VA
P: +1 804 320 5500

Copyright © 2022 Colliers International. Information herein has been obtained from sources deemed reliable, however its accuracy cannot be guaranteed. The user is required to conduct their own due diligence and verification.

Southpark II - Suite 5056

Southpark II - Suite 5056
7,126 SF



Contact us:

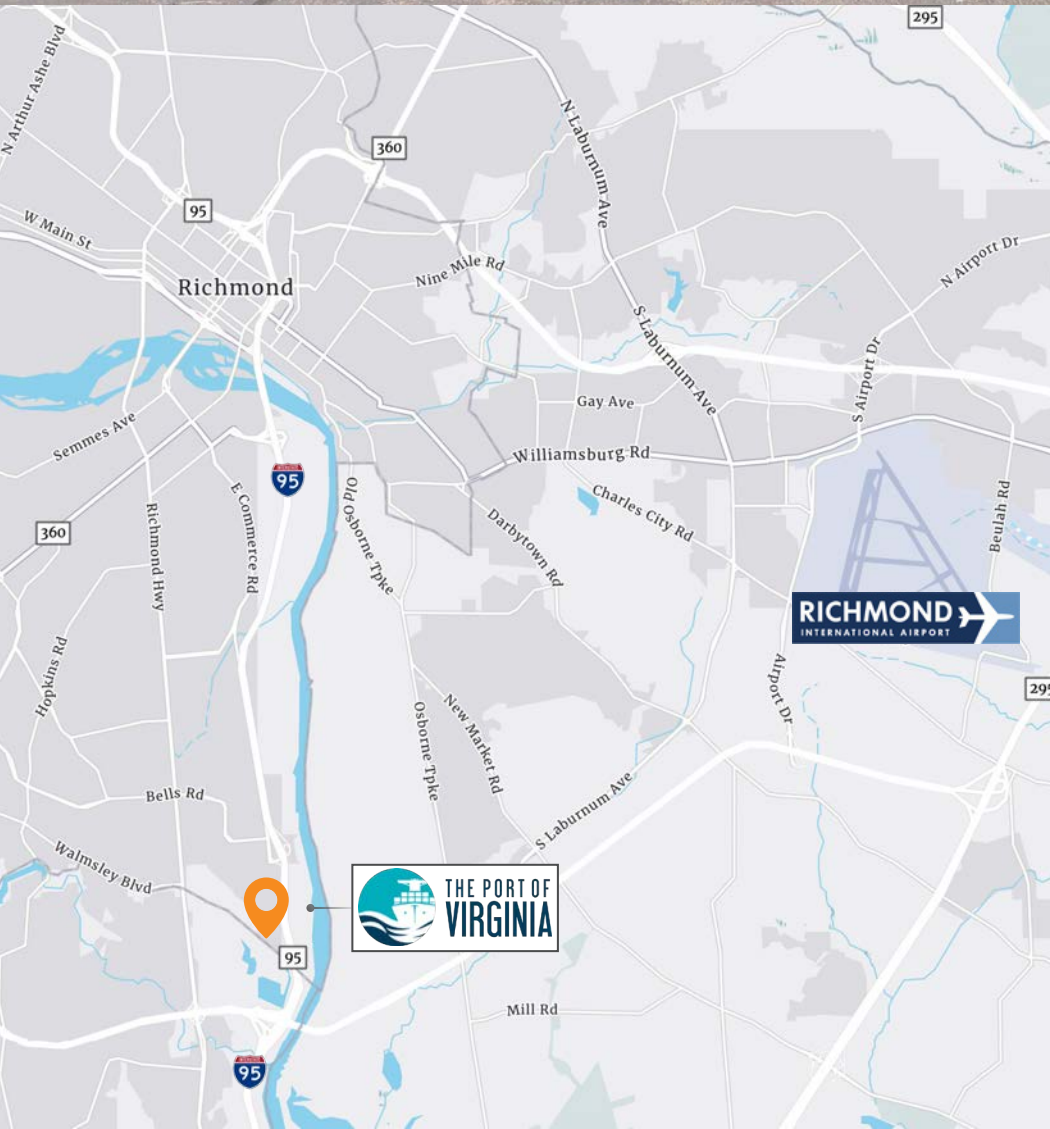
Wood Thornton

Senior Vice President
+1 804 267 7221
wood.thornton@colliers.com

Jimmy Martin

Vice President
+1 804 267 7218
jimmy.martin@colliers.com

Southpark II - Suite 5056



Contact us:

Wood Thornton

Senior Vice President
+1 804 267 7221
wood.thornton@colliers.com

Jimmy Martin

Vice President
+1 804 267 7218
jimmy.martin@colliers.com