



2120

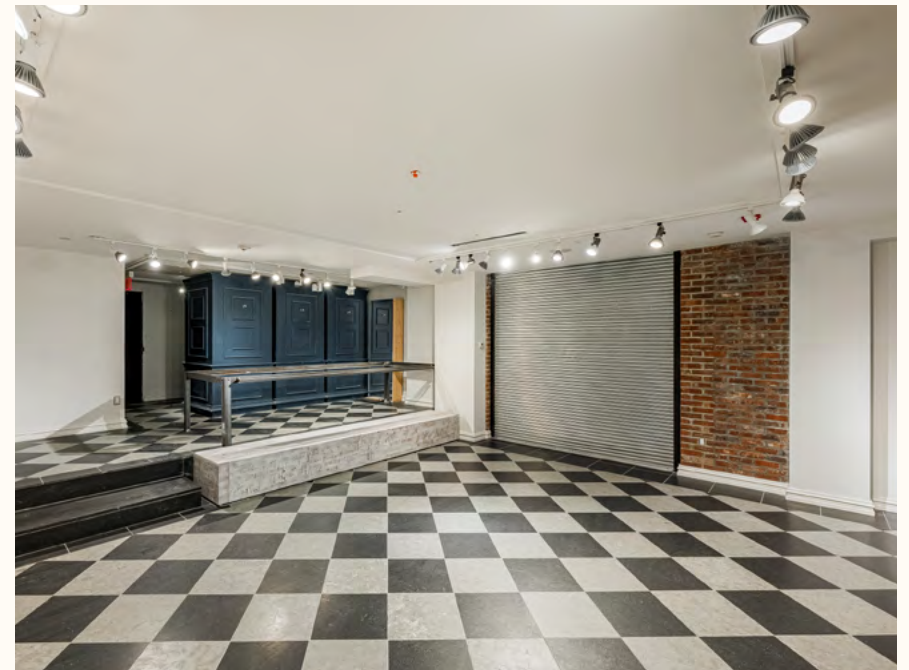
DE LA MONTAGNE STREET
MONTREAL, QUEBEC

Located in the
Golden Square Mile
of the Downtown Core

RETAIL SPACE FOR LEASE

Lease Terms

- + **TERM**
5 - 10 YEARS
- + **SEMI-GROSS RENT**
\$60.00 PER SQ. FT.
- + **HYDRO**
METERED
- + **AVAILABILITY**
IMMEDIATE



Property Highlights



Located on De la Montagne Street between De Maisonneuve Boulevard and Sherbrooke Street



The spaces benefits from premium visibility and excellent foot traffic



With expansive window-shopping facades and excellent curb appeal

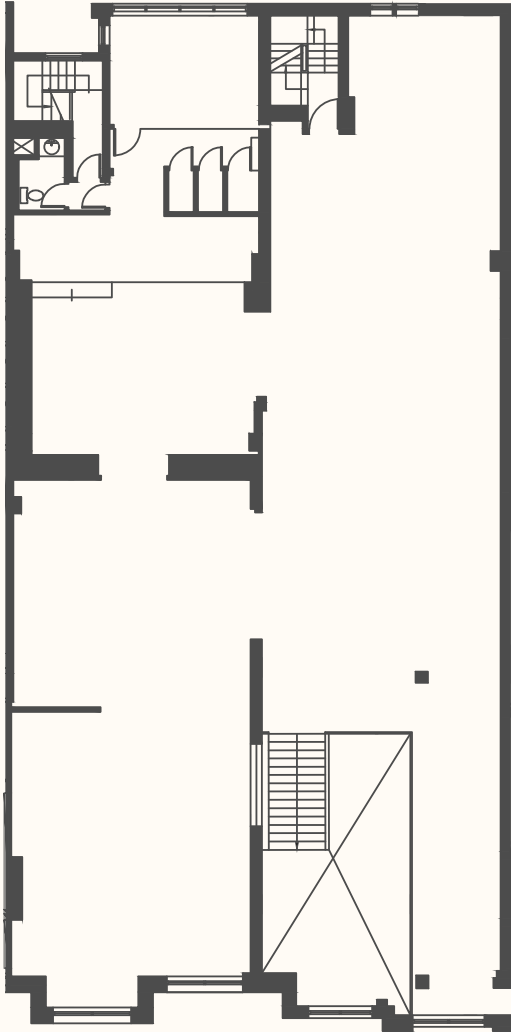
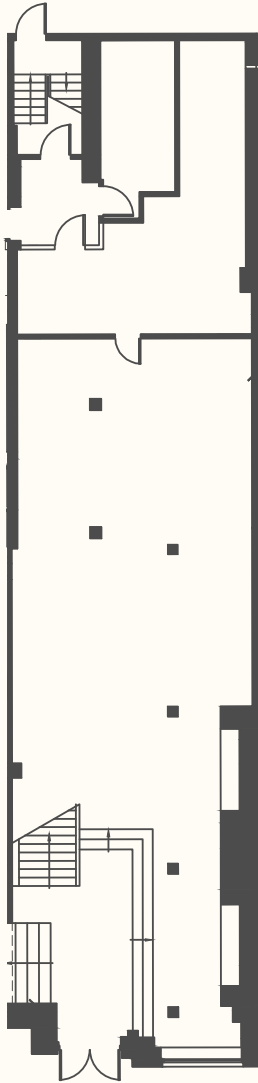


Neighbouring tenants include Apple, Holt Renfrew, Tiffany&Co and Lululemon



5-min walk from the Peel metro station

UPPER LEVEL | 4,478 SQ. FT.



STREET LEVEL | 2,449 SQ. FT.

Location

Contact Us

Christopher Rundle

Vice President
Real Estate Broker
+1 514 375 0818
christopher.rundle@cbre.com

Bryan Greenberg

Associate Vice President
Commercial Real Estate Broker
+1 514 375 2507
bryan.greenberg@cbre.com

Amanda Angela Herbu

Associate
Commercial Real Estate Broker
+1 514 375 0456
amanda.herbu@cbre.com

CBRE Limited, Real Estate Agency | 1250 René-Lévesque Blvd
West, Suite 2800 | Montréal, Québec H3B 4W8 | +1 514 849
6000 | www.cbre.ca

This disclaimer shall apply to CBRE Limited, Real Estate Agency, and to all other divisions of the Corporation; to include all employees and independent contractors ("CBRE"). The information set out herein, including, without limitation, any projections, images, opinions, assumptions and estimates obtained from third parties (the "Information") has not been verified by CBRE, and CBRE does not represent, warrant or guarantee the accuracy, correctness and completeness of the Information. CBRE does not accept or assume any responsibility or liability, direct or consequential, for the information or the recipient's reliance upon the Information. The recipient of the Information should take such steps as the recipient may deem necessary to verify the Information prior to placing any reliance upon the Information. The Information may change and any property described in the Information may be withdrawn from the market at any time without notice or obligation to the recipient from CBRE. CBRE and the CBRE logo are the service marks of CBRE Limited and/or its affiliated or related companies in other countries. All other marks displayed on this document are the property of their respective owners. All Rights Reserved. Mapping Sources: Canadian Mapping Services canadamapping@cbre.com; DMTI Spatial, Environics Analytics, Microsoft Bing, Google Earth.

