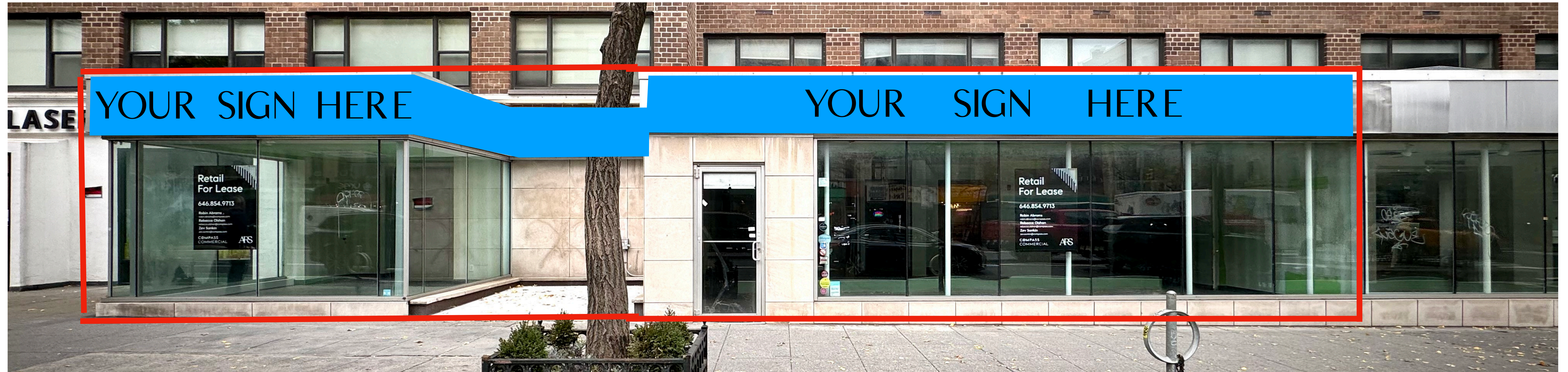


1161 First Avenue

Between E 63rd & 64th St | Upper East Side



As exclusive agents we are pleased to offer the following retail space for lease:

Approximate Size

Ground: 2,554 SF
(Can Divide)

Division A: 1,152 SF
Division B: 1,402 SF

Asking Rent

Upon Request

Possession

Immediate

Term

Negotiable

Frontage

56'3"

Transportation



M15, M31, M57,
Q32, Q60, Q101

Comments

- Highly visible, with all glass storefront
- Dense residential neighborhood with restaurants and retail
- Non-vented food uses considered
- Possible to divide the space
- Around the corner from Browning School's new Campus
- In between Satori Laser and Amerivet ideal for pet related, wellness and
- Surrounded by Hospitals and Big Box Retailers that bring traffic

Robin Abrams
646.854.9754
robin.abrams@compass.com

Nicolas Zilkha
201.478.0099
nick.zilkha@compass.com

1161 First Avenue

Between E 63rd & 64th St | Upper East Side



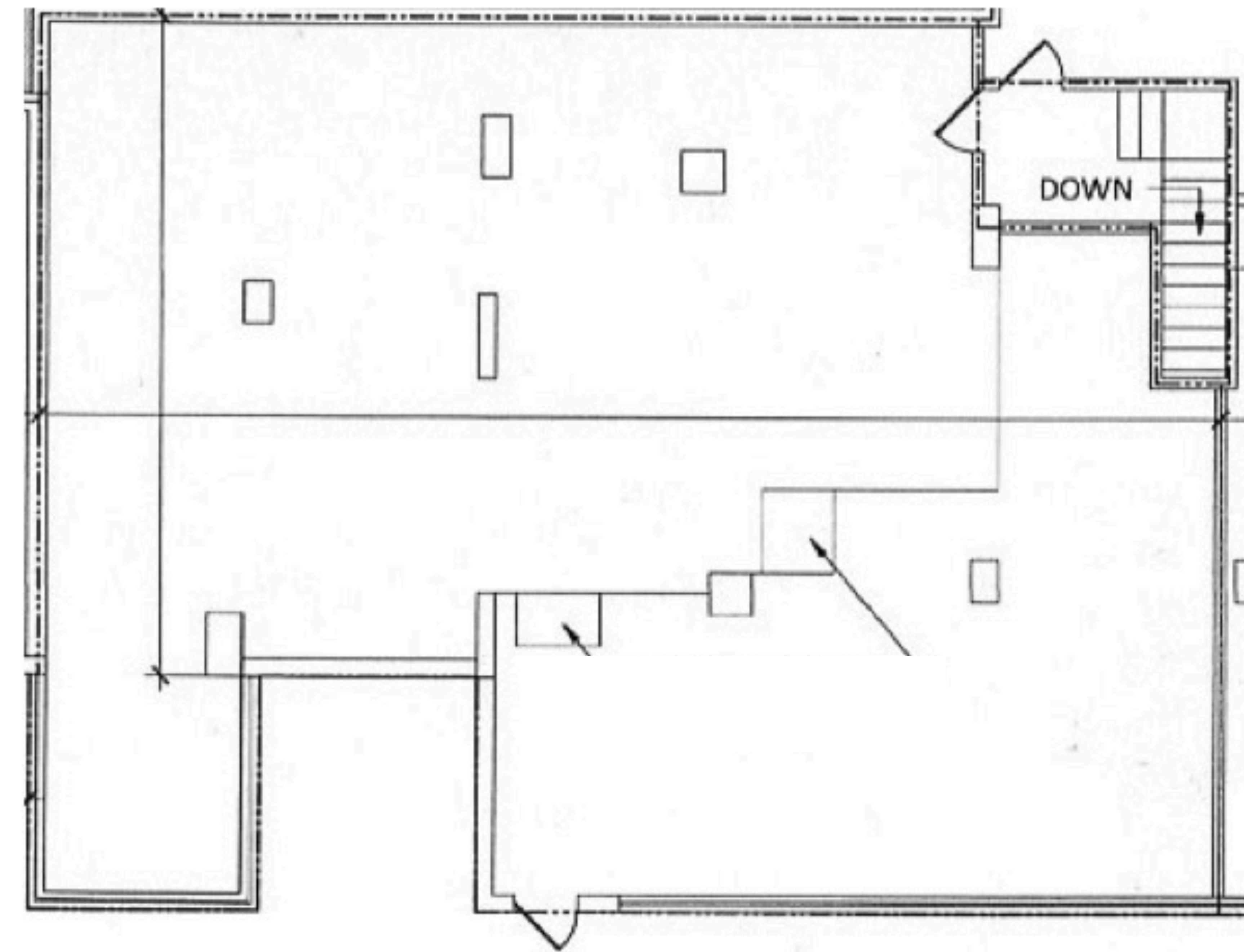
Outdoor
Seating
Possible

Robin Abrams
646.854.9754
robin.abrams@compass.com

Nicolas Zilkha
201.478.0099
nick.zilkha@compass.com

1161 First Avenue

Between E 63rd & 64th St | Upper East Side



56'3" FRONTAGE

Robin Abrams
646.854.9754
robin.abrams@compass.com

Nicolas Zilkha
201.478.0099
nick.zilkha@compass.com