

RETAIL JUNIOR ANCHOR SUBLEASE OPPORTUNITY | 12,000 SF

2983 JAMACHA ROAD

RANCHO SAN DIEGO



RANCHOSAN DIEGO.
TOWNE CENTER

JAMACHA ROAD
±79,200 CPD

2983 JAMACHA ROAD

CAMPO ROAD
±21,500 CPD

2983 Jamacha Road | Rancho San Diego Towne Center



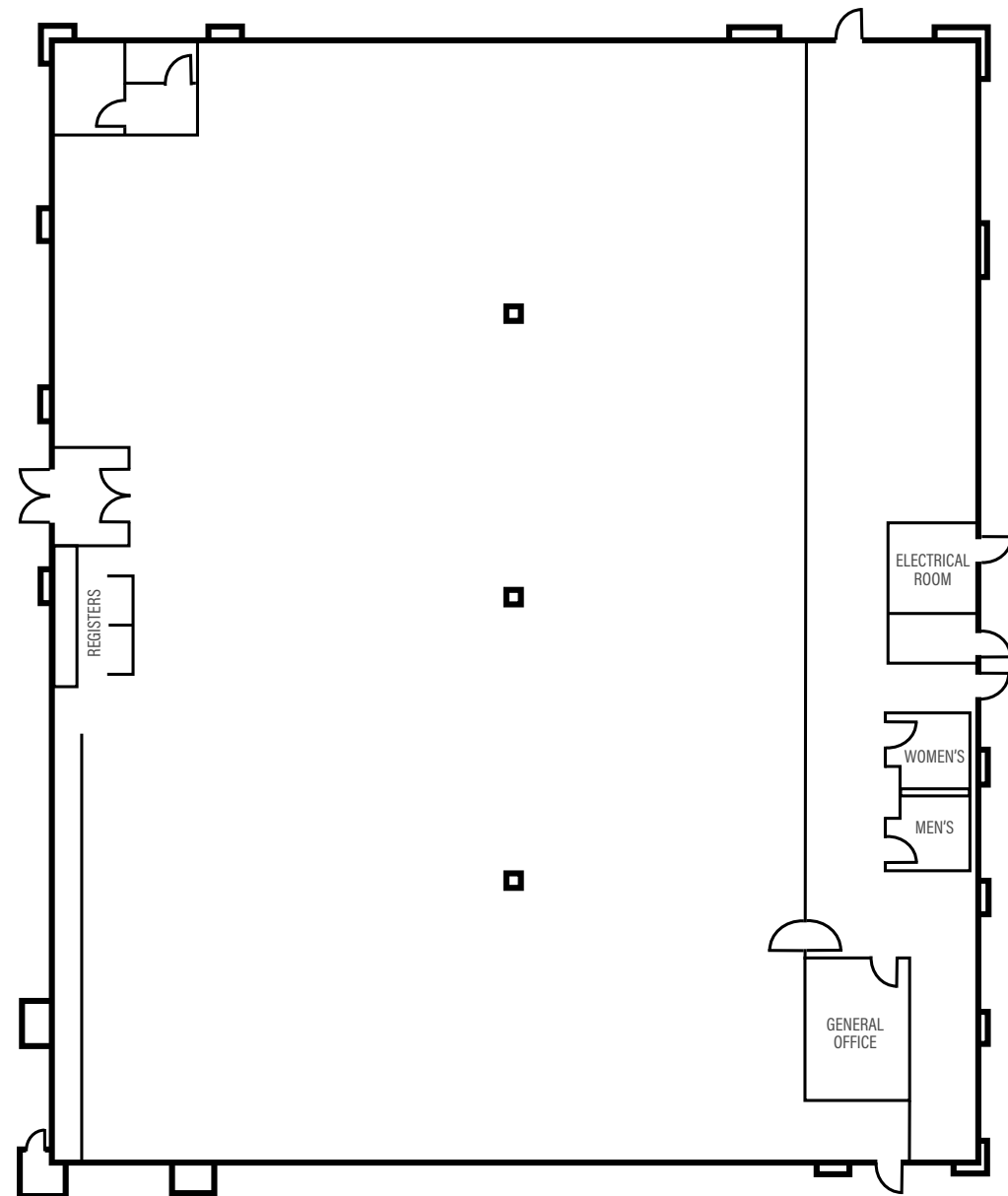
The Property

Sublease Available for a recently improved 12,000 SF Junior Anchor Retail Space in Excellent Condition. Located in the Rancho San Diego Towne Center, a ±381,000 SF shopping center.



Primary access from the north and west provided by Jamacha Road (Highway 94), the major arterial linking Rancho San Diego to downtown San Diego to the west and the City of El Cajon to the north. South/east access is provided by Campo Road which links Rancho San Diego to the communities of Jamul and Campo.

Space Details



- Space: 1st Floor, Ste Pad 1-2983
- Size: 12,000 SF
- Property Type: Retail Junior Anchor Space
- Property Subtype: Storefront
- Total Land Area: 2.73 AC
- Year Built: 2001
- Parking Ration 4.58/1,000
- AVAILABILITY: NOW
- LEASE RATE: Negotiable



The Location

Rancho San Diego is a planned East County community in El Cajon offering a mix of residential neighborhoods, retail centers, and recreational amenities. The area is served by well-rated schools, nearby parks, golf courses, and trail access, with convenient shopping and dining along major corridors. Its location provides quick access to State Route 94 and I-8, connecting residents and businesses to downtown San Diego and surrounding employment hubs.

5 mile radius



234,493
POPULATION



75,600
HOUSEHOLDS



\$78,863
MED. HH INCOME

RETAIL JUNIOR ANCHOR SUBLEASE OPPORTUNITY | 12,000 SF

RANCHO SAN DIEGO
TOWNE CENTER

2983 JAMACHA ROAD



©2025 Commercial Pacific Properties. Information herein has been obtained from sources deemed reliable, however its accuracy cannot be guaranteed. The user is required to conduct their own due diligence and verification.

2983 Jamacha Road | Rancho San Diego Towne Center

CPP

COMMERCIAL
PACIFIC
PROPERTIES



VIC GAUSEPOHL

Lic No: 01070105

619.227.2892

vic.gausepohl@compacprops.com



KIRK ALLISON

Lic No: 01049184

760.521.7501

kirk.allison@compacprops.com