

# NOW PRE-LEASING MIXED USE CENTER

SWQ CANAL STREET & BARTON ROAD | GRAND TERRACE, CA



## HIGHLIGHTS:

- ±6,000sf Drive Through Restaurant/Retail Building (Divisible to ±1,000sf) Coming Soon
- Groundbreaking Planned for 2025 | Shop Building Delivery Mid 2025
- Underserved Trade Area With Excellent Demographics
- Mixed Use Development Consisting of 191 Unit Multi-Family Residential Building, Retail, Restaurant, and Hotel
- Ideally Located Adjacent to Stater Bros, McDonald's, Miguels Jr and Autozone
- Signalized Access With Full Turning Movements

## DEMOGRAPHICS

	1 MILE	3 MILES	5 MILES
2024 Population:	14,875	64,436	218,504
Daytime Population:	7,717	46,524	170,264
Avg. Household Income:	\$113,054	\$104,217	\$95,384

Source: Regis Online

### Brian Bielatowicz

bbielatowicz@leetemecula.com  
951.445.4515  
DRE #01269887

### Faez Kanji

fkanji@leetemecula.com  
951.445.4528  
DRE #02162227

## TRAFFIC COUNTS

**158,063 CPD**      **23,586 CPD**

I-215 Fwy at Barton Rd.

Barton Rd.

Source: Regis Online

No warranty or representation has been made to the accuracy of the foregoing information. Terms of sale or lease and availability are subject to change or withdrawal without notice. Lee & Associates Commercial Real Estate Services, Inc. - Riverside. 25240 Hancock Avenue, Suite 100 - Murrieta, CA 92562 | Corporate ID# 01048055

# NOW PRE-LEASING MIXED USE CENTER

SWQ CANAL STREET & BARTON ROAD | GRAND TERRACE, CA



**Brian Bielatowicz**  
bbielatowicz@leetemecula.com  
951.445.4515  
DRE #01269887

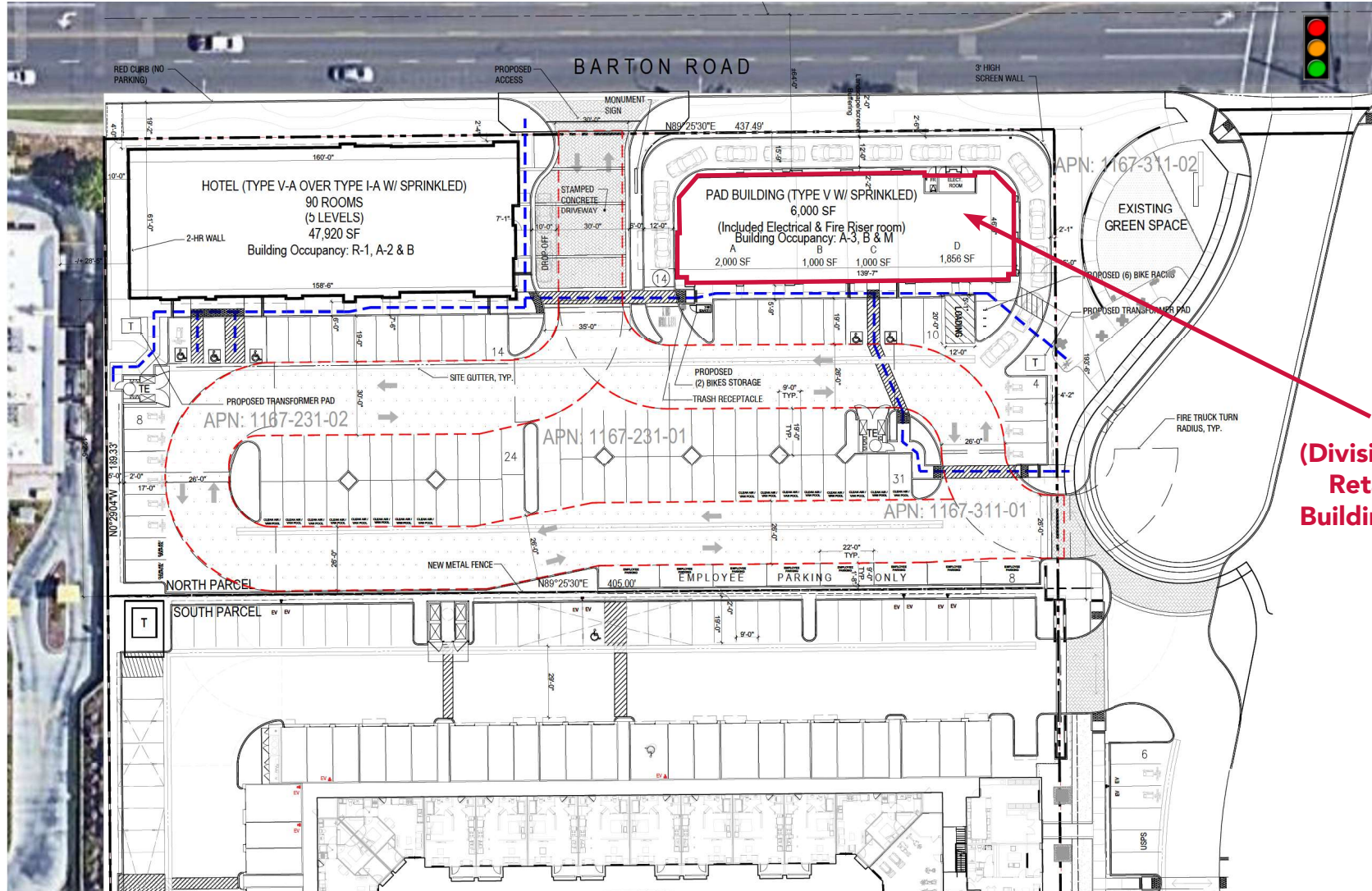
**Faez Kanji**  
fkanji@leetemecula.com  
951.445.4528  
DRE #02162227

No warranty or representation has been made to the accuracy of the foregoing information. Terms of sale or lease and availability are subject to change or withdrawal without notice. Lee & Associates Commercial Real Estate Services, Inc. - Riverside. 25240 Hancock Avenue, Suite 100 - Murrieta, CA 92562 | Corporate ID# 01048055

# NOW PRE-LEASING MIXED USE CENTER

SWQ CANAL STREET & BARTON ROAD | GRAND TERRACE, CA

## CONCEPTUAL SITE PLAN



**±6,000sf**  
**(Divisible to ±1,000sf)**  
**Retail/Restaurant**  
**Building Coming Soon**

**Brian Bielatowicz**  
bbielatowicz@leetemecula.com  
951.445.4515  
DRE #01269887

**Faez Kanji**  
fkanji@leetemecula.com  
951.445.4528  
DRE #02162227

No warranty or representation has been made to the accuracy of the foregoing information. Terms of sale or lease and availability are subject to change or withdrawal without notice. Lee & Associates Commercial Real Estate Services, Inc. - Riverside. 25240 Hancock Avenue, Suite 100 - Murrieta, CA 92562 | Corporate ID# 01048055

# NOW PRE-LEASING MIXED USE CENTER

SWQ CANAL STREET & BARTON ROAD | GRAND TERRACE, CA

## CONCEPTUAL RENDERINGS



**Brian Bielatowicz**  
bbielatowicz@leetemecula.com  
951.445.4515  
DRE #01269887

**Faez Kanji**  
fkanji@leetemecula.com  
951.445.4528  
DRE #02162227

No warranty or representation has been made to the accuracy of the foregoing information. Terms of sale or lease and availability are subject to change or withdrawal without notice. Lee & Associates Commercial Real Estate Services, Inc. - Riverside. 25240 Hancock Avenue, Suite 100 - Murrieta, CA 92562 | Corporate ID# 01048055

# NOW PRE-LEASING MIXED USE CENTER

SWQ CANAL STREET & BARTON ROAD | GRAND TERRACE, CA

## CONCEPTUAL RENDERINGS



**Brian Bielatowicz**  
bbielatowicz@leetemecula.com  
951.445.4515  
DRE #01269887

**Faez Kanji**  
fkanji@leetemecula.com  
951.445.4528  
DRE #02162227

No warranty or representation has been made to the accuracy of the foregoing information. Terms of sale or lease and availability are subject to change or withdrawal without notice. Lee & Associates Commercial Real Estate Services, Inc. - Riverside. 25240 Hancock Avenue, Suite 100 - Murrieta, CA 92562 | Corporate ID# 01048055

# NOW PRE-LEASING MIXED USE RETAIL CENTER

SWQ CANAL STREET & BARTON ROAD | GRAND TERRACE, CA



## ABOUT GRAND TERRACE:

Grand Terrace, which is referred to as the 'Blue Mountain City' is located in San Bernardino County on the I-215 corridor and is strategically situated between the cities of Riverside and San Bernardino. Incorporated in 1978, Grand Terrace has a population of over 12,000 and is known for offering a superb quality of life with a relaxed small-town feel, quiet neighborhoods, clean streets, high achieving public schools and a safe community environment, along with residential and commercial growth opportunities. Money Magazine has recognized the City of Grand Terrace as one of the Top 100 Best Places to live in America for Small Towns. Within a 7-Minute Drive Time, the trade area spans north and south the length of the I-215 freeway from the SR-60 to the I-10, and east and west from the Blue Mountain ridge to the Santa Ana River. The area includes a growing population of over 53,000 with projected growth of over 6% during the coming 5-year period.

Within the trade area there are over 17,000 households which is also expected to grow 6% over the next 5-years. Notable housing projects include:

Project (Approved or recently started)	New Homes
Spring Mountain Ranch	1,450
Foremost Companies	123
Capital Pacific Real Estate, Inc	35
Aegis Builders	29
Habitat for Humanity	2
Joab Jerome	2

## GROWTH IN THE MARKETPLACE:

The City of Grand Terrace trade area will experience significant growth in the next few years. The 7 minute drive time trade area with a current population of just over 53,000 is projected to grow significantly with new residential development including the following.

- 68 approved residential units under development in the City of Grand Terrace
- Foremost Companies just purchased an approved housing trace with 123 single-family homes in Grand Terrace
- Spring Mountain Ranch is master planned community under development just south of the Grand Terrace border that will produce 1,450 new homes. KB Homes is presently constructing the first phase of 400 homes within four distinct communities called Presidio Point (2,663-3,695 SF homes and prices ranging from \$540,465-\$633,269), Mission Gate (1,698-2,925 SF homes and prices ranging from \$492,830 to \$605,357), Monterey (1,675-2,528 SF homes and prices ranging

## DEMOGRAPHIC HIGHLIGHTS:

The City of Grand Terrace has a population of 12,040, but serves a broader trader area including south Colton and the unincorporated area of Riverside County to the north of the City of Riverside. Within a 3 minute drive time the trade area has a population of over 30,000 and within a 7 minute drive time is more than 53,000.

The Grand Terrace area also has a strong daytime population with nearly 75,000 within a 7 minute drive time.

There are 10,500 households within a 3 minute drive time. The Average Household Income level within a 3 minute drive time is \$64,210 and 28% of the people have a college degree.

from \$391,990 to \$448,990)and Capistrano (2,339-3,379 Sf homes and prices ranging from \$433,990 to \$485,990) There is no shopping components within the Spring Mountain Ranch master plan and Grand Terrace's Barton Road business corridor will serve this new 1,450 home area

- Lewis Group of Operating Companies closed on May 1, 2017 on the acquisition of 53-acres of property that formerly was Redevelopment Agency owned property in Grand Terrace. Lewis Homes is presently spending \$1 million in environmental review including the preparation of an Environmental Impact Report (EIR), master infrastructure plan and specific plan that will develop over 800 new townhomes and apartment homes in Grand Terrace.

# NOW PRE-LEASING MIXED USE RETAIL CENTER

SWQ CANAL STREET & BARTON ROAD | GRAND TERRACE, CA



## POSITIVE ATTRIBUTES:

The following are just some of the positive attributes Grand Terrace presents:

- Grand Terrace residents have disposable income with Grand Terrace having the 6th highest Median Household Income of San Bernardino County cities at \$69,080 (which is higher than Ontario and San Bernardino, as well as the neighboring communities of Colton, Loma Linda and Riverside).
- Grand Terrace has charming, safe and clean neighborhoods with a diverse housing stock, which offers affordability with an average home value of \$321,900.

- Grand Terrace public schools are high-achieving and Grand Terrace Elementary has been designated as a California Distinguished School.
- 26% of Grand Terrace residents have a Bachelor's Degree or higher, with 87% having a High School Degree or better.
- Grand Terrace has been ranked by Money Magazine as one of the Top 100 Best Places to Live.
- In May 2014, the Grand Terrace City Council adopted Grand Terrace Vision 2030, including a Strategic Plan to help guide the City of Grand Terrace through the period of 2014 to 2020. The Strategic Plan has several high priorities including a strong emphasis on economic development and attracting new businesses to locate in the community.

## DEMOGRAPHICS SNAPSHOT:

Below is a summary of demographic categories for the City of Grand Terrace:

- Population of 12,315 (as of 1/2016 according to the CA Department of Finance)
- Median age is 35.7
- Size of Grand Terrace is 3.5 square miles
- 4,703 housing units
- 2.7 occupancy size per household
- 62.6% of housing units are owner-occupied
- \$65,255 Median Household Income (6th highest of cities in San Bernardino County)
- \$8,204 Annual Retail Sales Per Capita
- 26% of residents possess a Bachelor's Degree or higher
- 87% of residents have a High School Degree or above
- 24.6 minutes for Average Travel Time to Work for Grand Terrace Residents
- Ethnic breakdown of Grand Terrace residents include: 46.4% White; 39.1% Hispanic; 6.5% Asian; 5.6% Black; 2.4% All Other

