



Colliers

282 Richmond Street E., Toronto, ON

Classic Brick and Beam office space for lease

Chris Fyvie

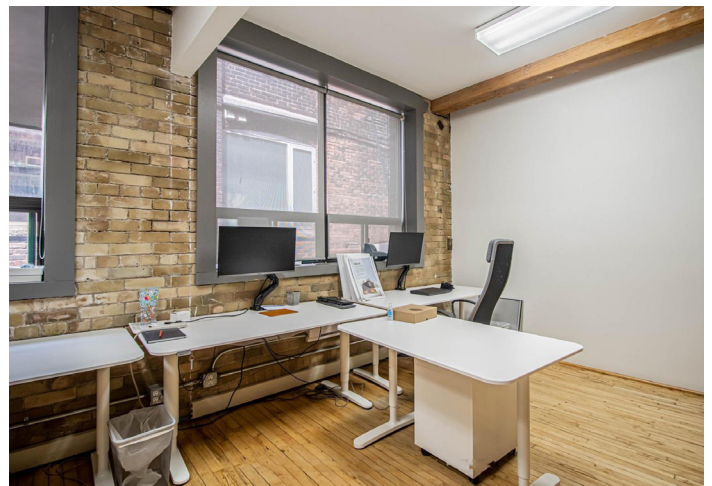
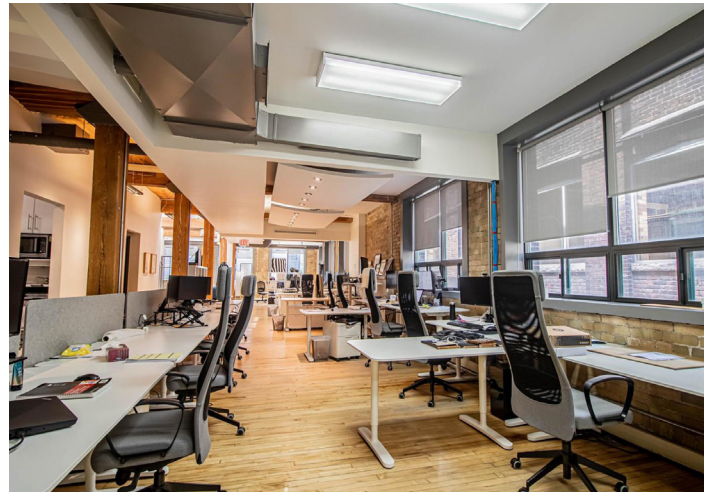
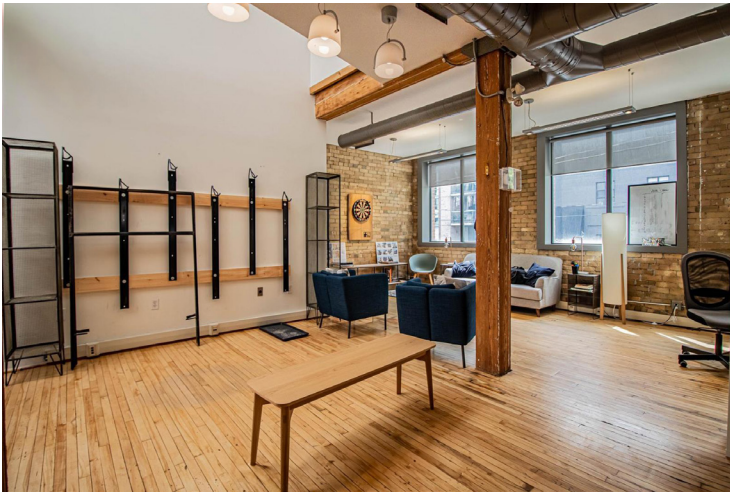
Vice President
Sales Representative
+1 416 643 3713
chris.fyvie@colliers.com

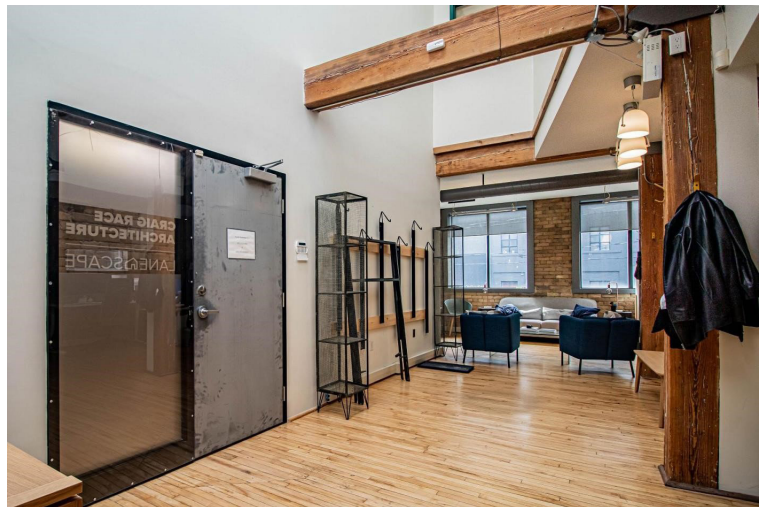
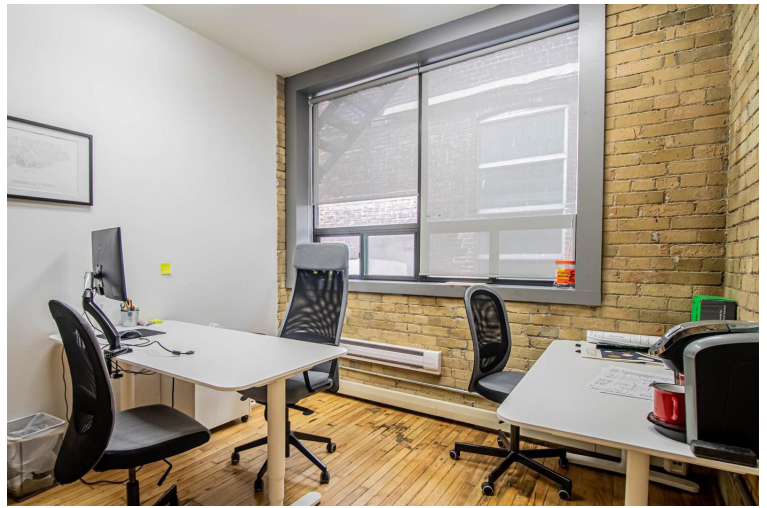
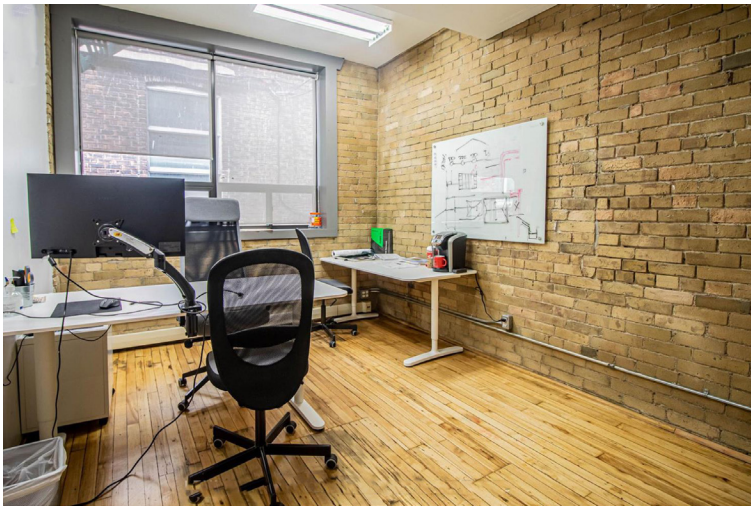
Accelerating success.

Property Overview

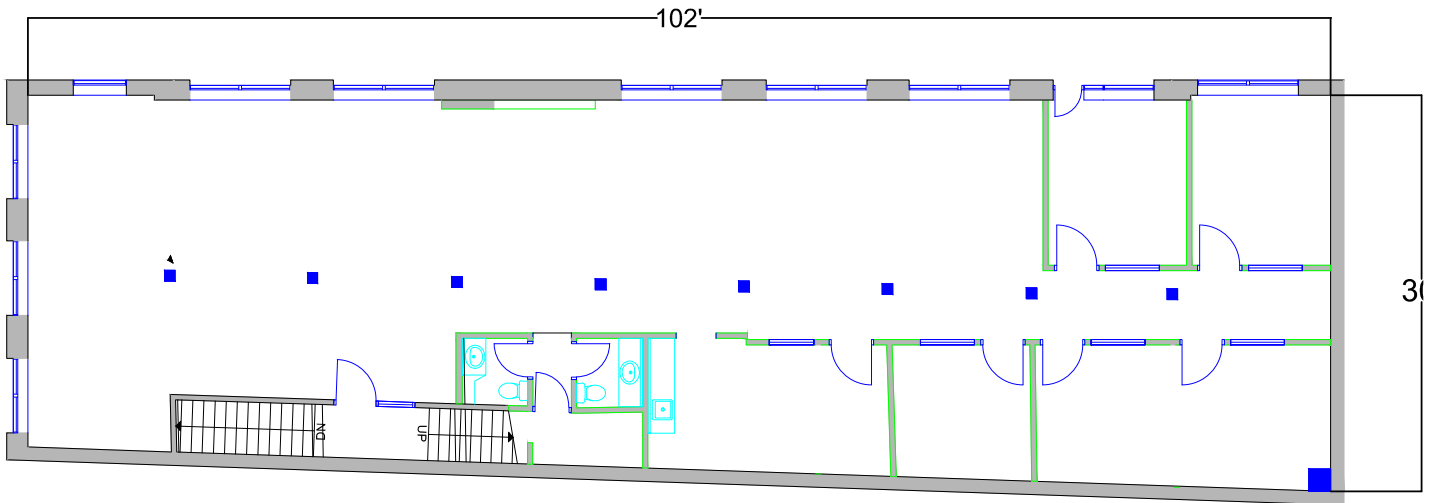
| | |
|---------------|-------------------|
| Area: | 2nd Floor |
| Size: | 2,754 SF |
| Asking Price: | \$35.00 psf Gross |

2nd Floor walkup. Classic brick and beam with offices, meeting rooms, kitchen and open space.





Floor Plan





282 Richmond Street E., Toronto | Ontario

Chris Fyvie

Vice President
Sales Representative
+1 416 643 3713
chris.fyvie@colliers.com

This document has been prepared by Colliers for advertising and general information only. Colliers makes no guarantees, representations or warranties of any kind, expressed or implied, regarding the information including, but not limited to, warranties of content, accuracy and reliability. Any interested party should undertake their own inquiries as to the accuracy of the information. Colliers excludes unequivocally all inferred or implied terms, conditions and warranties arising out of this document and excludes all liability for loss and damages arising there from. This publication is the copyrighted property of Colliers and/or its licensor(s). Copyright © 2025. All rights reserved. This communication is not intended to cause or induce breach of an existing listing agreement.

