

2900 NEWTON STREET NE WASHINGTON, DC

FOR LEASE: 6,500 SF RETAIL/OFFICE SPACE ALONG BUSY NE CORRIDOR

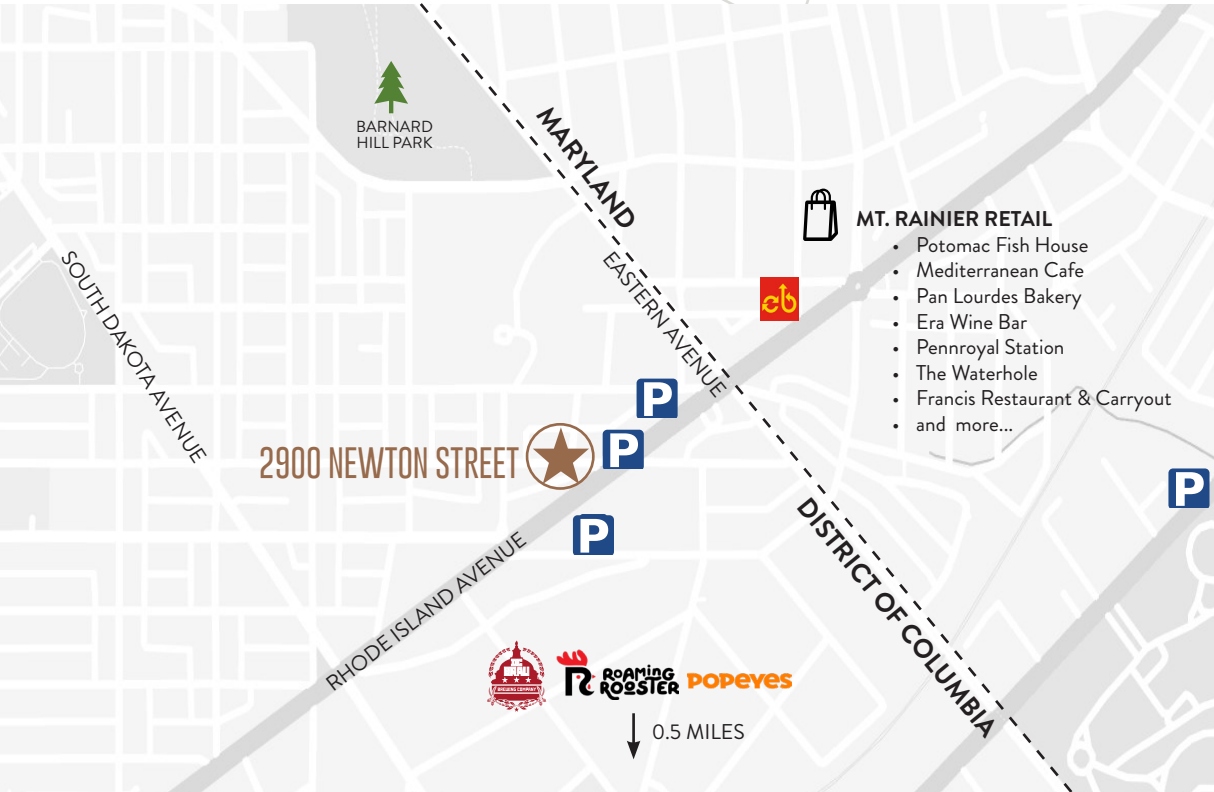


DONOHUE

ETHAN ABRAMS | 202.625.4192 | ethana@donohoe.com

PROPERTY DETAILS:

- **6,500 SF** first-floor office/retail space just off of Rhode Island Avenue
- Value play for proximity to DC and MD without congestions
- Built in customer base with residential units on upper floors
- Located in close proximity to Mt. Rainier shopping and dining
- Parking negotiable



35,000+ VPD
On Rhode Island Avenue



UNDER \$35.00/SF
Competitive Rate

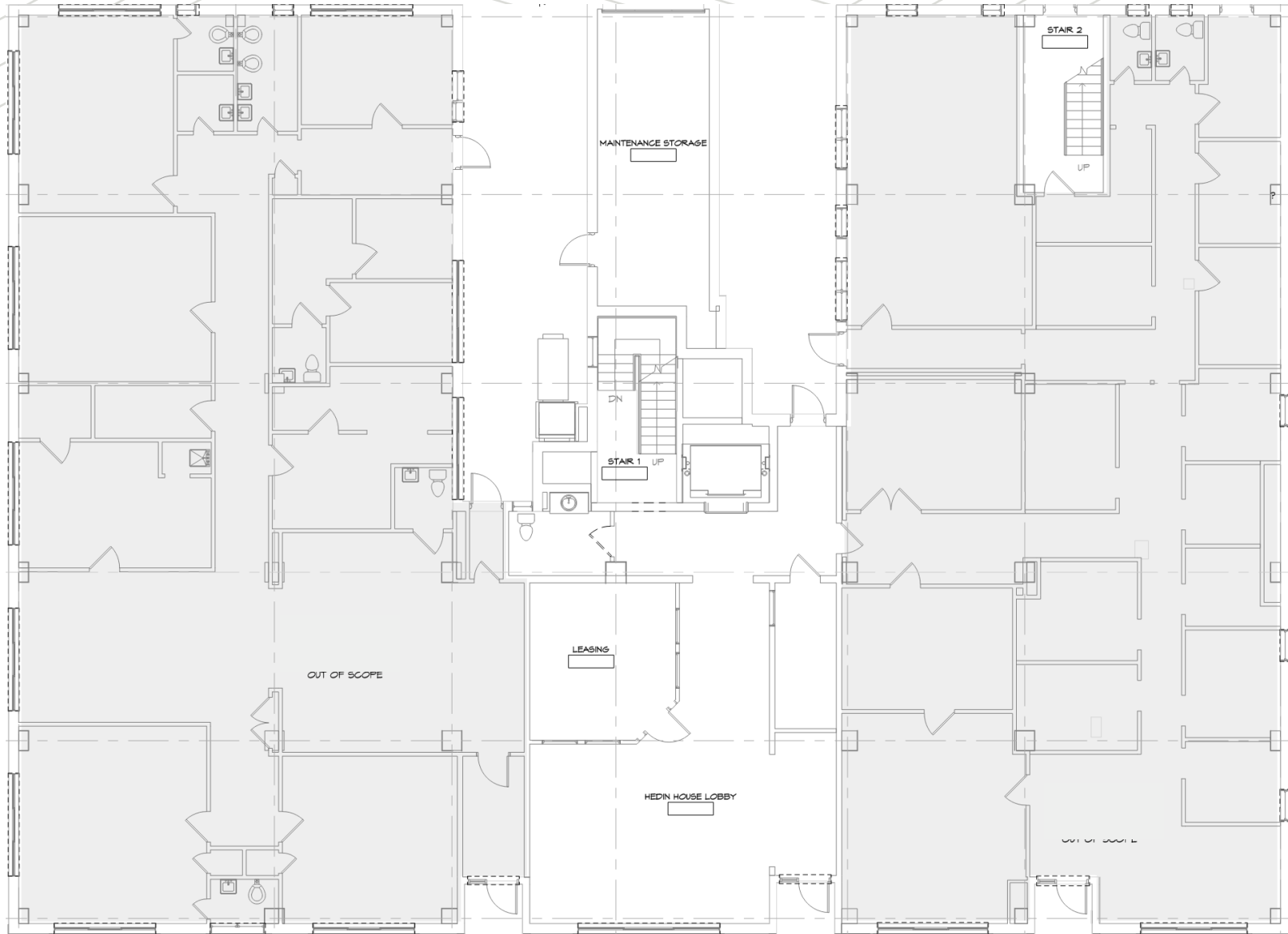


50 APARTMENTS
On Floors 2-5



0.5 MILES
From Mt. Rainier Retail

FLOOR PLAN:



WESTERN SUITE

EASTERN SUITE

ETHAN ABRAMS | 202.625.4192 | ethana@donohoe.com

DONOHOE

All rights reserved. This information has been obtained from sources believed reliable, but has not been independently verified, and no representations are being made with respect to accuracy or completeness. Interested parties are expected to conduct a careful, independent investigation of the property to verify all information. Any reliance on this information is solely at recipient's own risk.