

TWO GOVERNOR PARK

6310 Greenwich Drive, San Diego, CA 92122



CBRE



TWO GOVERNOR PARK

6310 Greenwich Drive, San Diego, CA 92122

Building Features

Direct access to Interstate 805 and Highway 52

Unique building design with open interior provides for an abundance of window line

Recently renovated restrooms

Low core factor

Showers on the 1st Floor

Lush courtyard with seating area

Parking Ratio: 4/1,000 USF Leased

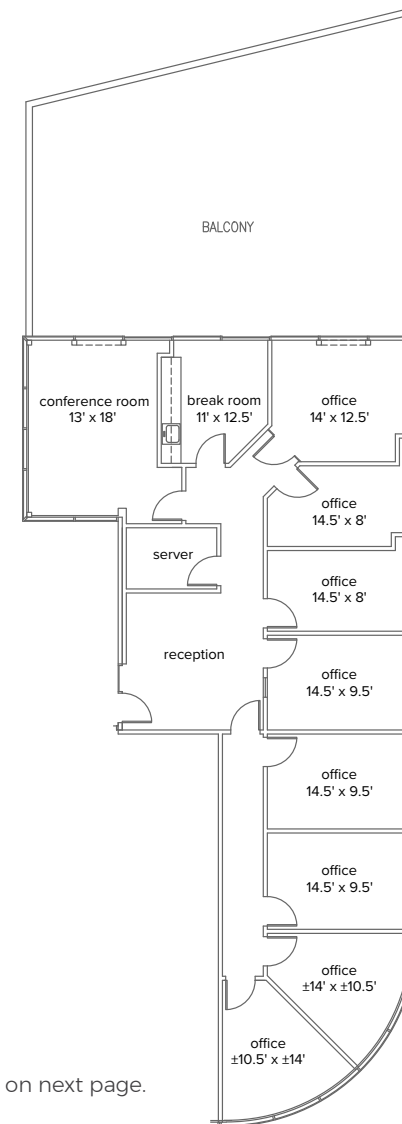
Fiber to the building is Spectrum & AT&T

Private patios in select suites only



AS BUILT PLAN

Suite 200 - 2,944

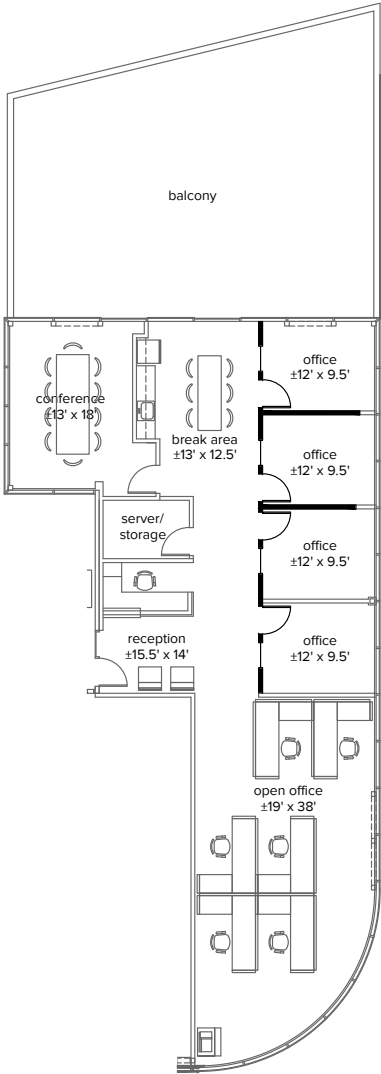


See alternative plan on next page.

Suite	Size	Available	Lease Rate	Description
200	2,944 SF	Vacant	\$2.85/SF + Electricity	Suite features reception area, conference room with sliding glass door to a private patio, 8 window-lined offices, break room, server room and large patio.

ALTERNATIVE PLAN

Suite 200 - 2,944



Suite	Size	Available	Lease Rate	Description
200	2,944 SF	Vacant	\$2.85/SF + Electricity	Suite features reception area, conference room with sliding glass door to a private patio, 4 window-lined offices, break area, server/storage room, open office area and large patio.

TWO GOVERNOR PARK

6310 Greenwich Drive, San Diego, CA 92122



For Information, please contact:

SCOTT KINCAID

Lic. 01228568

+1 858 546 4691

scott.kincaid@cbre.com

KRISTA KIRKSEY

Lic. 01405552

+1 858 546 2620

krista.kirksey@cbre.com

The logo for CBRE, consisting of the letters 'CBRE' in a bold, green, sans-serif font.

© 2025 CBRE, Inc. All rights reserved. This information has been obtained from sources believed reliable, but has not been verified for accuracy or completeness. Any projections, opinions, or estimates are subject to uncertainty. The information may not represent the current or future performance of the property. You and your advisors should conduct a careful, independent investigation of the property and verify all information. Any reliance on this information is solely at your own risk.