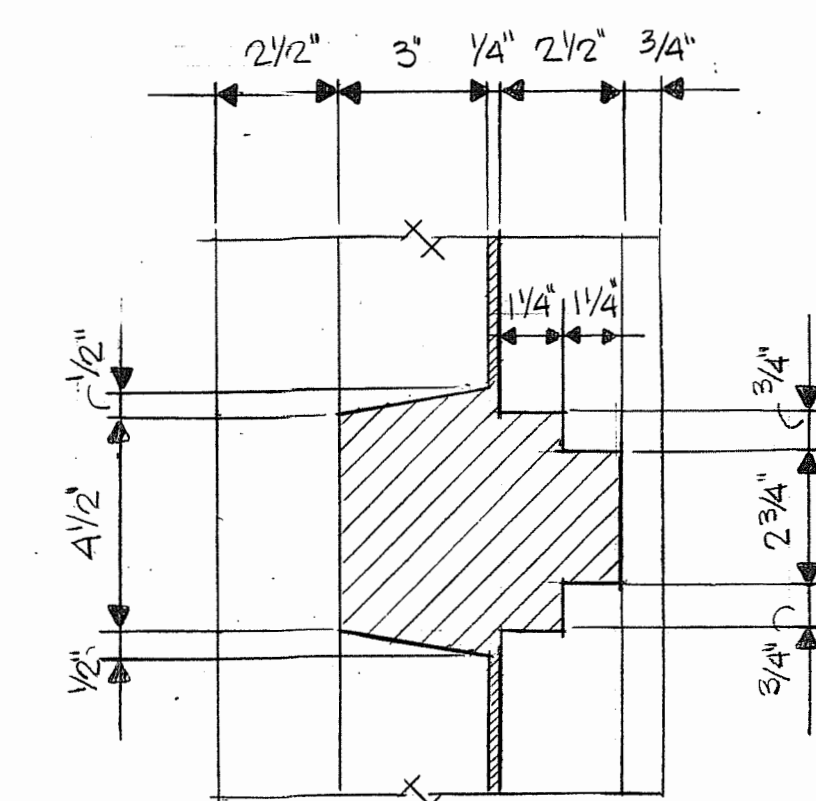
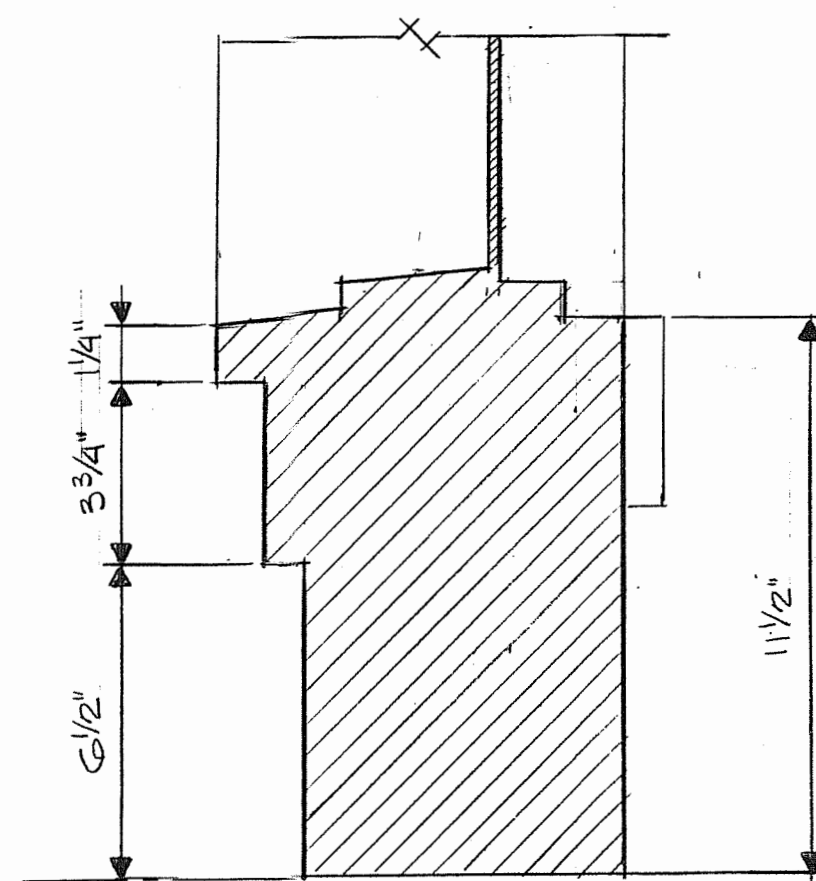


EXISTING FLOOR PLAN SCALE: 1/8" = 1'-0"

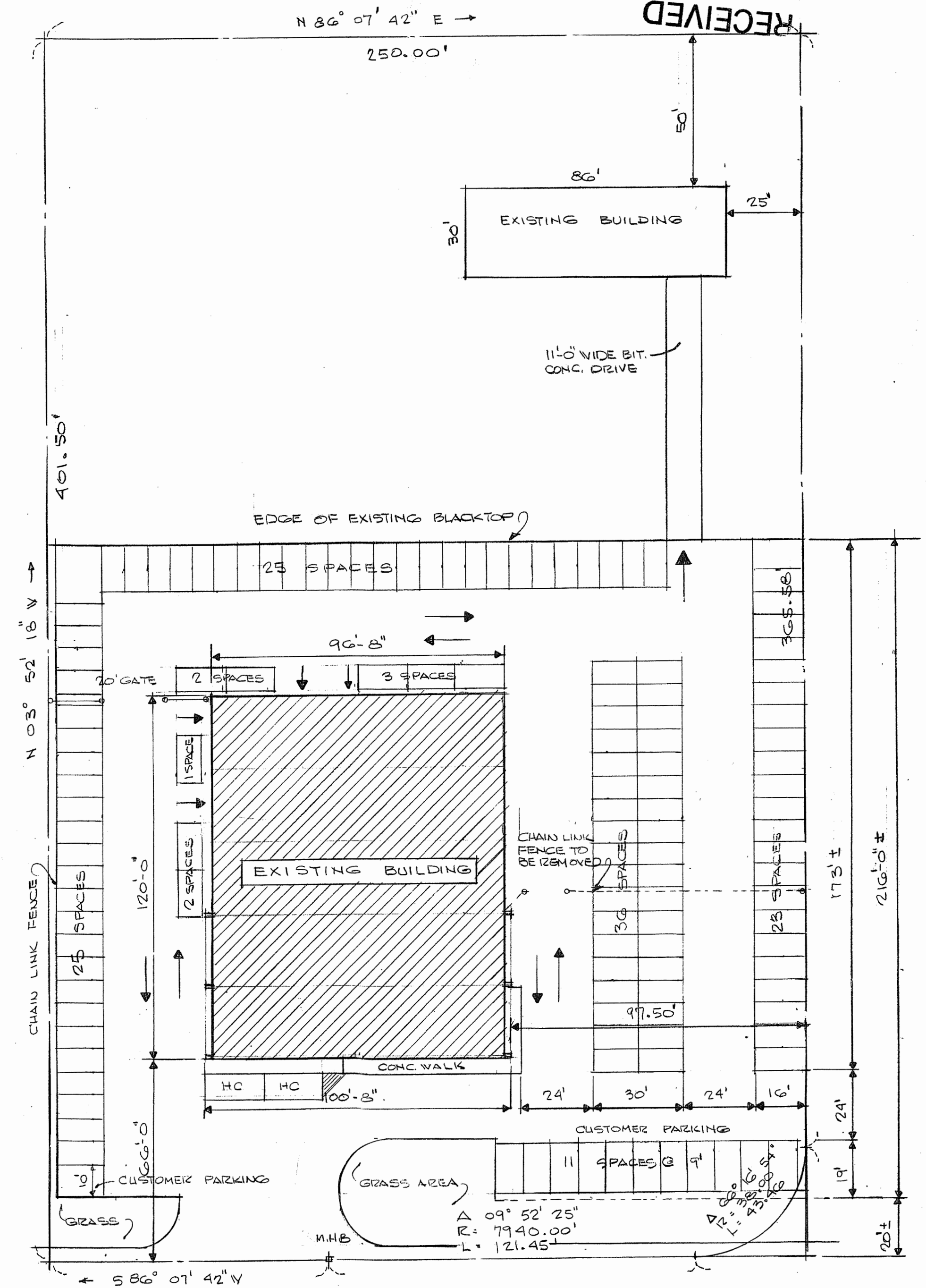


TYPICAL MULLION



TYPICAL SILL

EXISTING STORE FRONT PROFILE SCALE: 3/8" = 1'-0"



WORCESTER (ROUTE 9) TURNPIKE

BASED ON SITE PLAN SUBMITTED FOR SPECIAL PERMIT WHICH WAS GRANTED SEPTEMBER 9, 1979

PARKING TABULATION:
EXISTING SHOWROOM = 1152 S.F. = 6 SPACES; PROPOSED SHOWROOM ADDITION = 1152 S.F.
12 CUSTOMER PARKING SPACES @ 1 SPACE PER 200 S.F.

TOTAL PARKING = 128 SPACES PLUS 2 HANDICAP SPACES

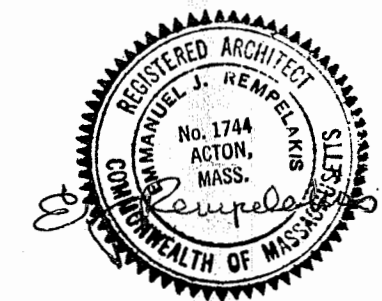
SITE PLAN SCALE: 1" = 30'-0"

GENERAL NOTES:

- HVAC AND ELECTRICAL WORK TO BE QUOTED "DESIGN BUILD" IN ACCORDANCE WITH MASS. STATE BUILDING CODE. CONTRACTOR TO SPECIFY LIGHTING, CONVENIENCE OUTLETS, AND HVAC EQUIPMENT COMPATIBLE WITH EXISTING IN HIS BID.
- HVAC CONTRACTOR TO NOTIFY STRUCTURAL ENGINEER OF WEIGHT AND PROPOSED LOCATION OF ANY NEW ROOF-TOP HVAC UNIT OR UNITS.

REVISIONS

Nº	DATE	LOCATION
1	OCT. 29, 1997	PARKING LAYOUT ON SITE PLAN



RENOVATIONS TO COLONIAL MAZDA VOLKSWAGEN

233 TURNPIKE ROAD (ROUTE 9) WESTBOROUGH, MASS.

E. J. REMPELAKIS ASSOCIATES ARCHITECTS

SUITE 201 179 GREAT ROAD ACTON, MASSACHUSETTS 01720

SITE PLAN
EXISTING FLOOR PLAN

SCALE: AS NOTED

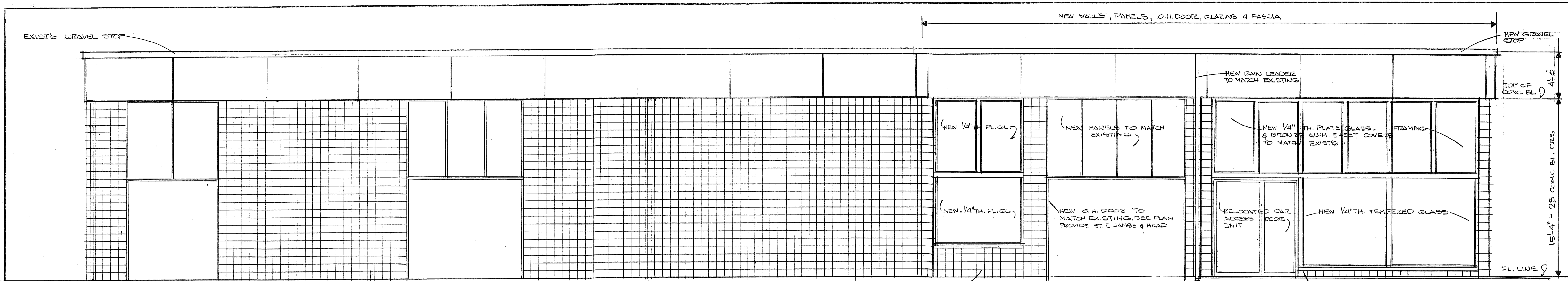
DATE: JULY 21, 1997

DR. EJR CH. EJR

PROJ. NO. 9726

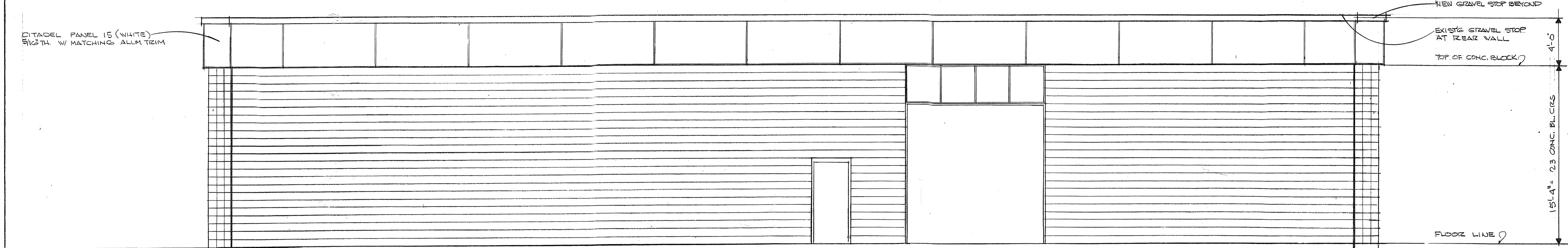
OF 3

A-1



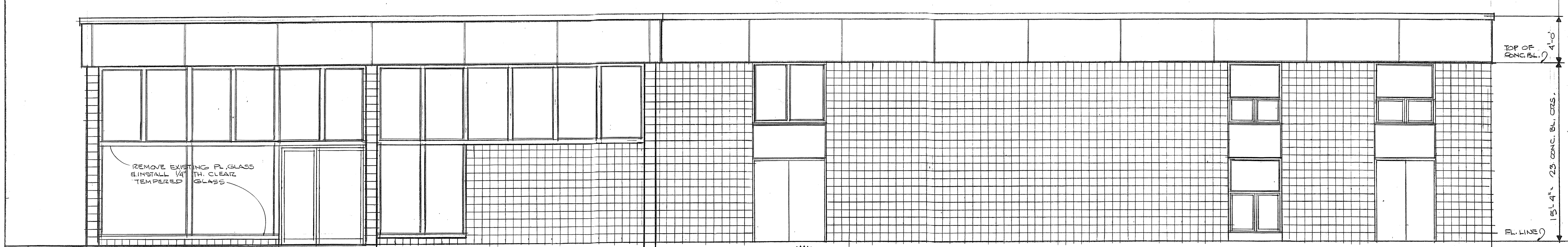
LEFT SIDE ELEVATION

SCALE: 1/4" = 1'-0"



REAR ELEVATION

SCALE: 1/4" = 1'-0"



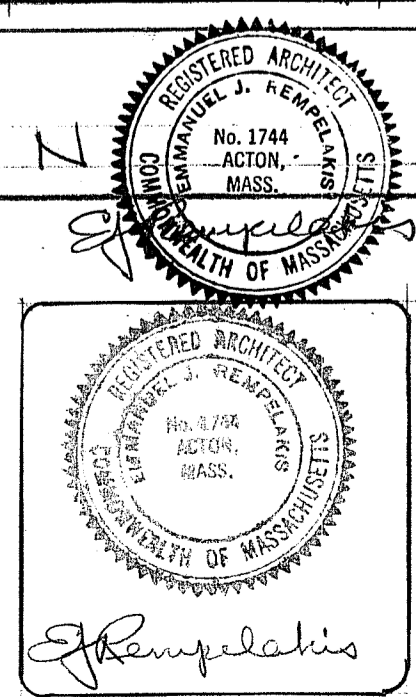
RIGHT SIDE ELEVATION

SCALE: 1/4" = 1'-0"

INSTRUCTIONS TO BIDDERS:

1. BIDS SHALL BE SUBMITTED NO LATER THAN 2:00PM THURSDAY AUGUST 19, 1997
2. TO THE OFFICE OF THE ARCHITECT, 179 GREAT ROAD, ACTON MA. 01720,
3. BIDS SHALL INCLUDE THE COST OF THE BUILDING PERMITS,
4. STRUCTURAL ENGINEERING QUESTIONS SHALL BE ADDRESSED TO JOSEPH GEORGIAS
5. 9 TAFT DRIVE, WINCHESTER MA, 01890, TELEPHONE & FAX (617) 729-4646
6. EXISTING BUILDING IS KNOWN AS ROY RIBUX MAZDA/VOLKSWAGEN, ROUTE 9
7. WESTBOROUGH AND MAY BE INSPECTED DURING BUSINESS HOURS.
8. ARCHITECTS TELEPHONE & FAX (508) 263-1110

REVISIONS		
Nº	DATE	LOCATION



RENOVATIONS TO COLONIAL MAZDA VOLKSWAGEN
 233 TURNPIKE ROAD (ROUTE 9) WESTBOROUGH, MASS.

E. J. REMPELAKIS ASSOCIATES ARCHITECTS
 SUITE 201 179 GREAT ROAD ACTON, MASSACHUSETTS 01720

EXTERIOR ELEVATIONS

SCALE: 1/4" = 1'-0"

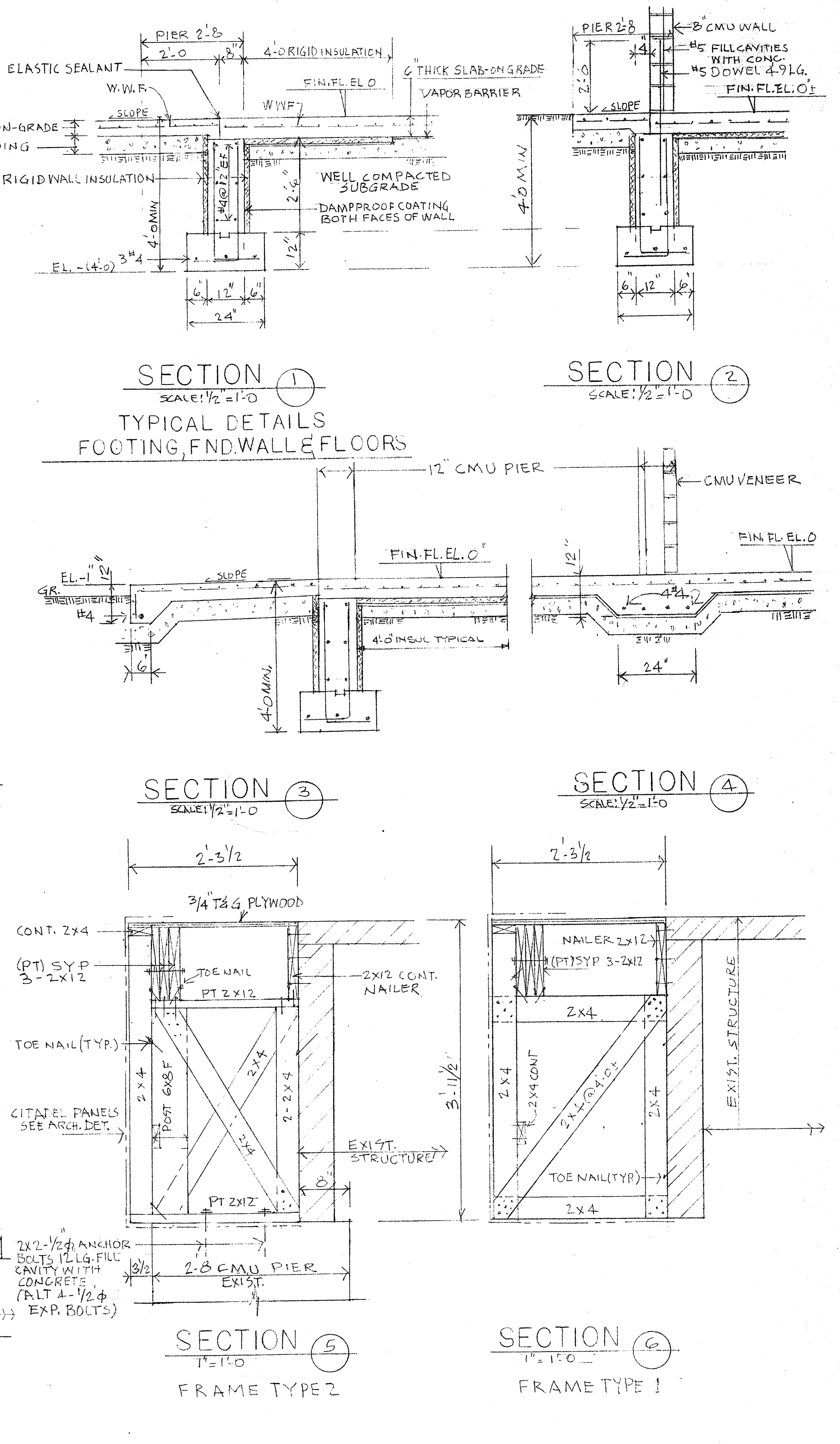
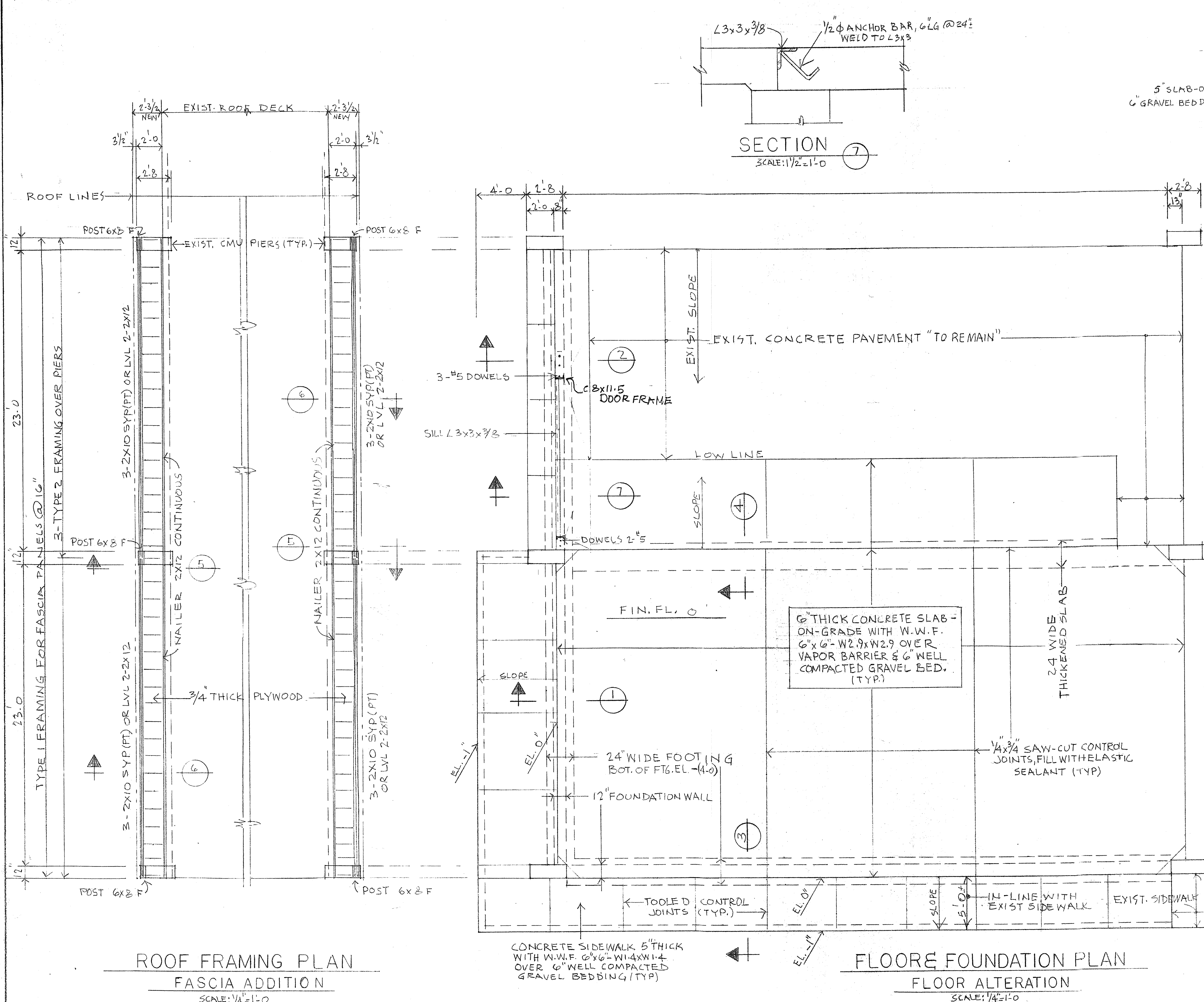
DATE: JULY 21, 1997

DR. EJR CH. EJR

PROJ. NO. 9726

OF 3

A-3



- NOTES:**
1. FIELD MEASURE PRIOR TO ORDERING OF MATERIALS & FABRICATION.
 2. CANOPY ADDITION & FLOOR RENOVATIONS ARE DESIGNED IN ACCORDANCE WITH MASS. BUILDING CODE, LIVE LOADS; ROOF 35 PSF & FLOOR 100 PSF.
 3. MATERIALS: FRAMING; SPRUCE 2KD, BEAMS SOUTHERN YELLOW PINE (SYP) OR EQ. PRESSURE TREATED (PT). $F_b = 1325$ PSI CONCRETE; 3000 PSI, REINFORCING STEEL; A615 GR. 40. W.W.F. WELDED WIRE FABRICS, A185 CONCRETE MASONRY UNITS (CMU); BEARING QUALITY, REINFORCED CAVITIES, FILL WITH 2000 PSI CONCRETE.
 4. NAILING IN ACCORDANCE WITH MASS. BUILDING CODE, APPENDIX 'C'.

JOSEPH GEORGIS, P. E.
9 TAFT DRIVE WINCHESTER, MA.

RENOVATIONS TO COLONIAL MAZDA VOLKSWAGEN
133 TURNPIKE ROAD (ROUTE 9) WESTBOROUGH MASS
E. J. REMPELAKIS ASSOCIATES ARCHITECTS
SUITE 201 179 GREAT ROAD ACTON, MASSACHUSETTS 01720

ROOF & FLOOR PLANS & DETAILS
SCALE: AS SHOWN
DATE: 7.21.97
DR. CH.
PROJ. NO.

S-1