

SAN MATEO / SCIENCE CENTER

Class A Lab Space in the Heart of the Peninsula

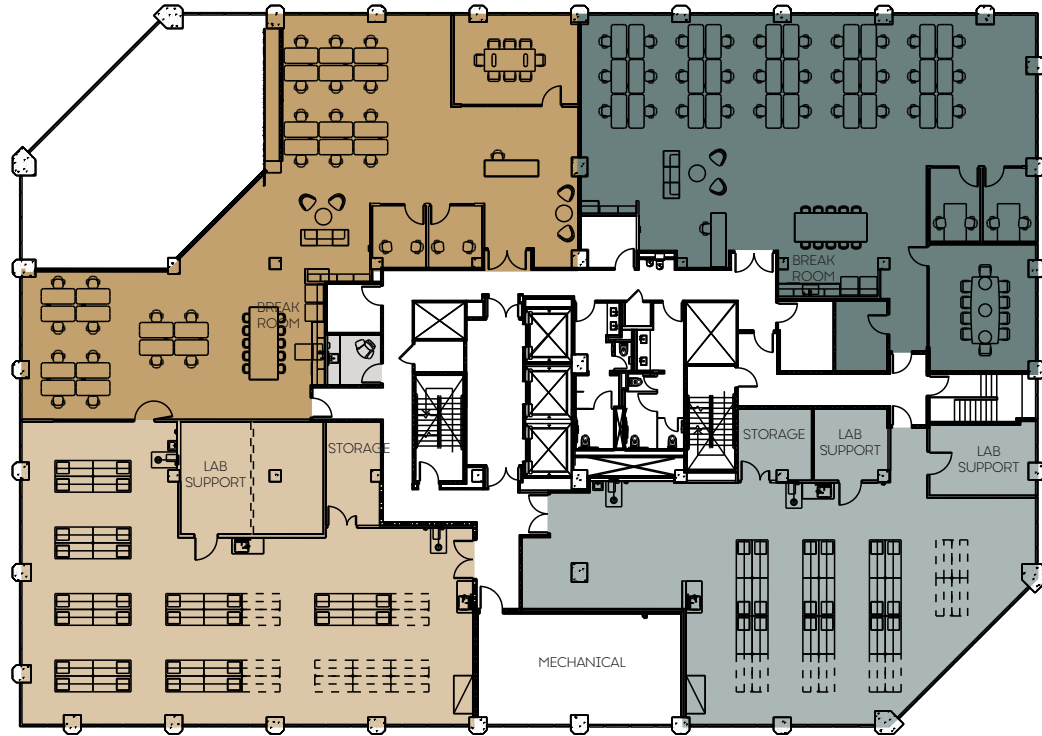


NEWMARK

MARINERS ISLAND BLVD

951 / Floor 2

Multi Tenant Floor Plan
± 17,900 Square Feet



SUITE 200

Lab Benches: 18*
Workstations: 30
Office/Huddle: 2
Conference Rooms: 1

SUITE 250

Lab Benches: 28*
Workstations: 24
Office/Huddle: 2
Conference Rooms: 1

Shared Wellness Room

*Casework provided

± 8,800 SF SUITE 200 ± 9,100 SF SUITE 250

Bill Benton

Vice Chairman
415 274 4421
bill.benton@nrmk.com
Lic. #01247617

Eric Bluestein

Executive Managing Director
650 688 8547
eric.bluestein@nrmk.com
Lic. #01720416

John Kraft

Managing Director
650 358 5277
john.kraft@nrmk.com
Lic. #01787698

Neill Sherron

Partner, Portfolio Leasing
919 414 0320
nsherron@lfrp.com





NEWMARK

JOHN KRAFT

Managing Director
650 358 5277
john.kraft@nmrk.com
Lic. #01787698

ERIC BLUESTEIN

Executive Managing Director
650 688 8547
eric.bluestein@nmrk.com
Lic. #01720416

BILL BENTON

Vice Chairman
415 274 4421
bill.benton@nmrk.com
Lic. #01247617

COLIN KLOEZEMAN

Associate
650 688 8532
colin.kloezeman@nmrk.com
Lic. #02210827

NEILL SHERRON

Partner, Portfolio Leasing
919 414 0320
nsherron@lfrep.com

Procuring broker shall only be entitled to a commission, calculated in accordance with the rates approved by our principal only if such procuring broker executes a brokerage agreement acceptable to us and our principal and the conditions as set forth in the brokerage agreement are fully and unconditionally satisfied. Although all information furnished regarding property for sale, rental, or financing is from sources deemed reliable, such information has not been verified and no express representation is made nor is any to be implied as to the accuracy thereof and it is submitted subject to errors, omissions, change of price, rental or other conditions, prior sale, lease or financing, or withdrawal without notice and to any special conditions imposed by our principal.