

# FOUR MILLBANK

SW1

1,000 sq ft of Turnkey Office Space

BRAND NEW CONTEMPORARY FULLY FITTED OFFICES

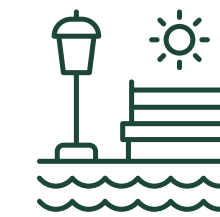


High quality office space designed with the modern occupier in mind

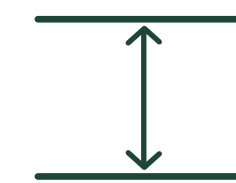
Four Millbank is situated in the heart of Westminster, occupying a prominent position on the corner of Millbank and Great Peter Street, a short walk from Westminster tube station. The property benefits from an on-site cafe and lounge area.



Prestigious location



Direct access to nearby green spaces



Superb floor to ceiling height



Communal bike storage and Brompton lockers



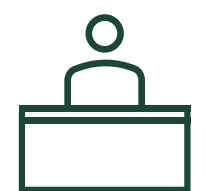
Communal cafe



Brand new, high specification fitted workspace



Access to communal roof terrace



24/7 manned reception

# TURNKEY OFFICE SPACE



The ground floor suite is a stone's throw from Parliament. The unit has fantastic floor to ceiling height and plenty of natural light. The building also has excellent connectivity and fibre available.

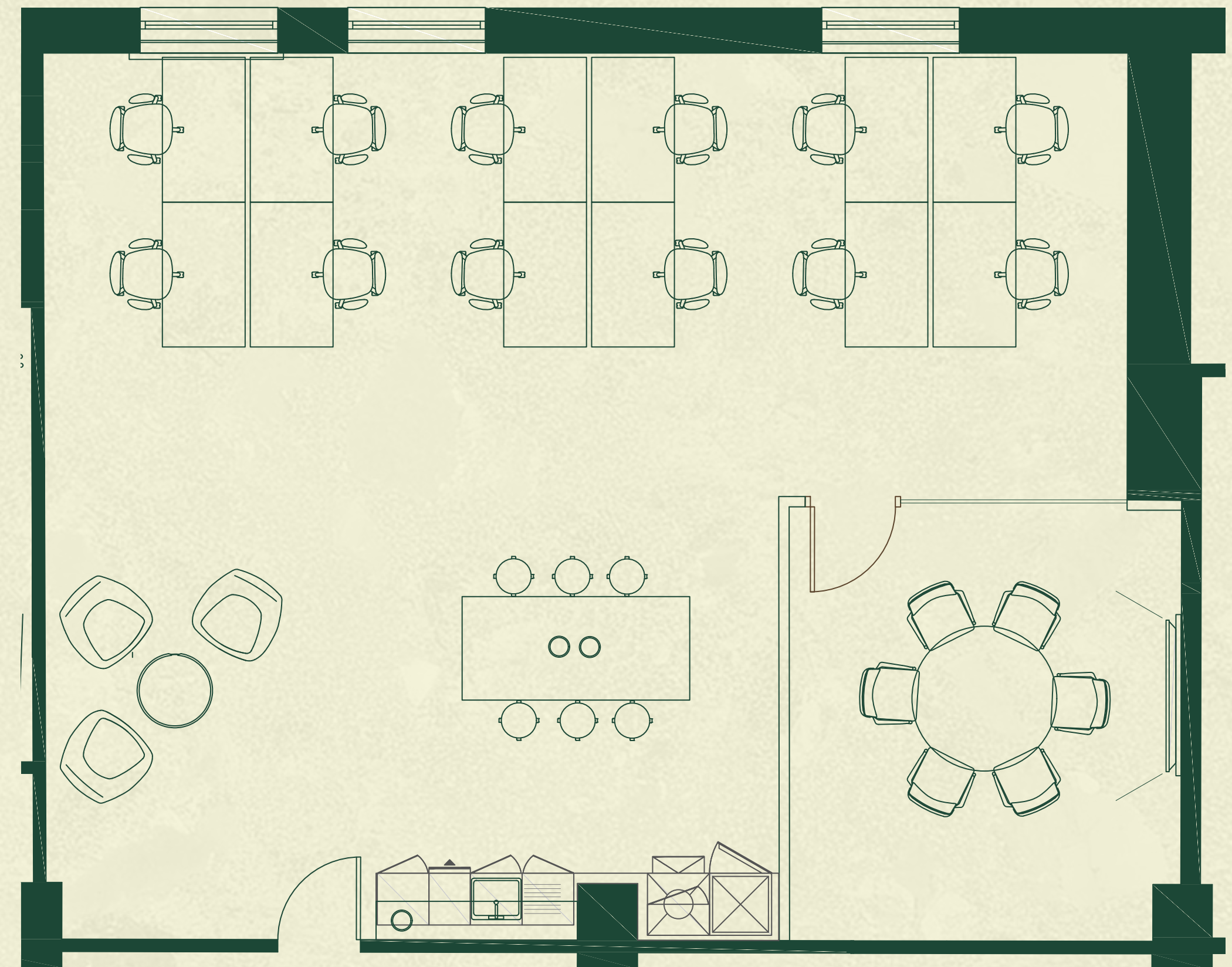


# CURRENT AVAILABILITY

[VIEW VIRTUAL TOUR](#)

FLOOR	SQ FT	SQ M	STATUS	CONDITION
Ground Floor	1,002	93.09	Available Now	CAT A+
<b>Total</b>	<b>1,002</b>	<b>93.09</b>		

▼ Ground Floor



12 x Workstations

1 x 6 person meeting room

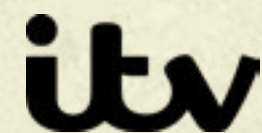
1 x Lounge

1 x Collaboration area

1 x Tea point / Breakout area

Join a well-established community of tenants

The property is multi let and occupiers include the BBC, ITV, Sky UK, Oxford Economics and Global Radio.



# A BREATH OF FRESH AIR FOR YOUR BUSINESS

▼ Westminster Abbey



▼ Victoria Tower Gardens



▼ The Tate Britain



▼ The Cinnamon Club



▼ St John's Gardens



# WESTMINSTER'S AMENITY AND GREENERY ON YOUR DOORSTEP



▲ Chez Antoinette Brasserie

▼ Bustling Strutton Ground Food Market



# ACCESS ALL AREAS

Situated for modern businesses, this prestigious address places you just moments from Parliament, government departments, and leading organisations. The location offers excellent transport links, including an abundance of underground stations and numerous bus routes.

WATERLOO STATION

15  
minutes

BANK STATION

20  
minutes

KING'S CROSS ST. PANCRAS

21  
minutes

CLAPHAM JUNCTION

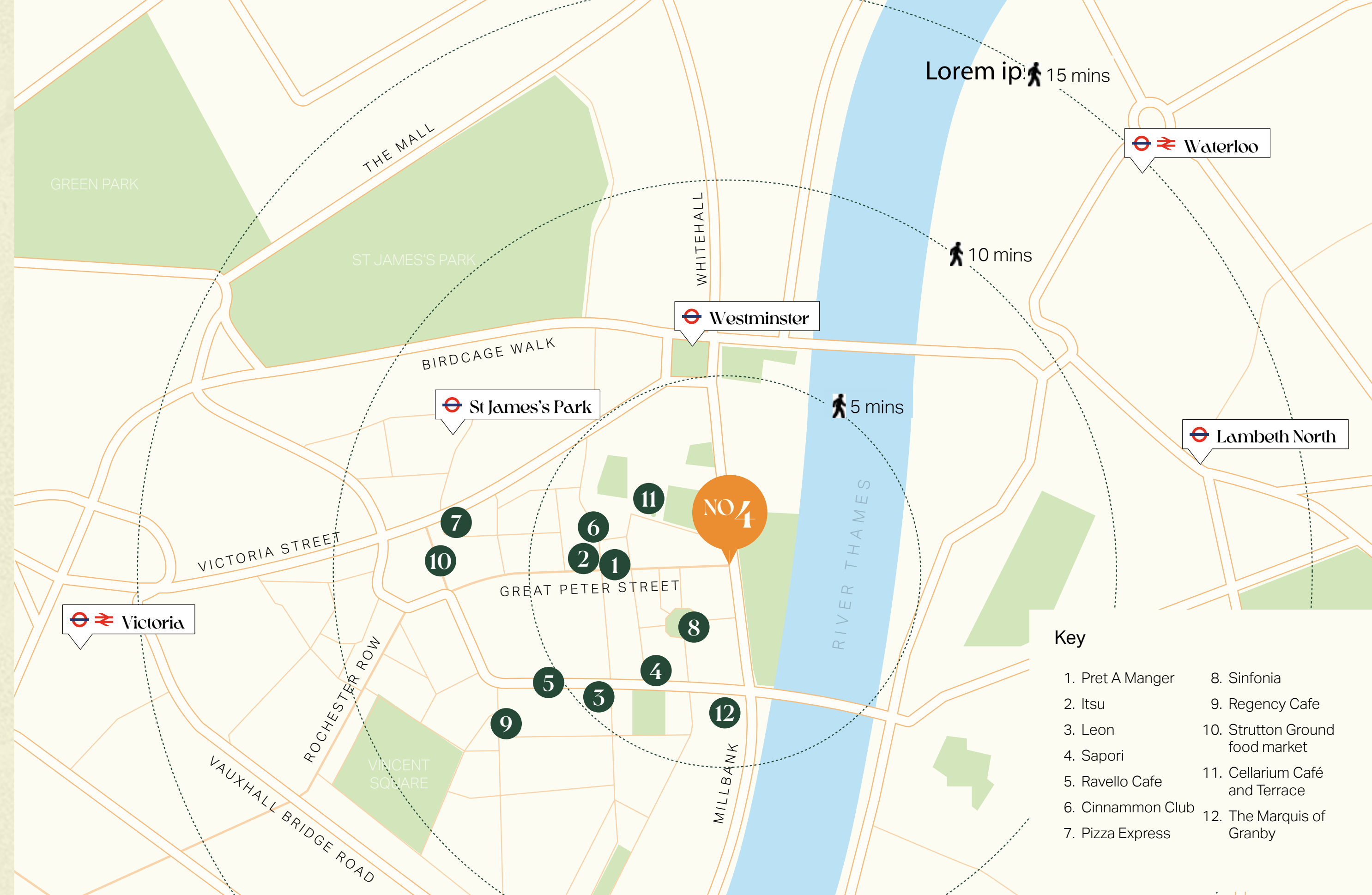
25  
minutes

CANARY WHARF

30  
minutes

GATWICK AIRPORT

42  
minutes



### Key

- |                  |                                 |
|------------------|---------------------------------|
| 1. Pret A Manger | 8. Sinfonia                     |
| 2. Itsu          | 9. Regency Cafe                 |
| 3. Leon          | 10. Strutton Ground food market |
| 4. Sapori        | 11. Cellarium Café and Terrace  |
| 5. Ravello Cafe  | 12. The Marquis of Granby       |
| 6. Cinnamon Club |                                 |
| 7. Pizza Express |                                 |

For further information contact the exclusive leasing agents



**Scott Fisher**  
+44 (0) 7890 572 225  
sfisher@tuckerman.co.uk

**Jade Henson-Amphlett**  
+44 (0) 7921 452 727  
jhensona@tuckerman.co.uk



**Harry Cormack**  
+44 (0) 7815 463 822  
harry.cormack@levyrealestate.co.uk

**Megan Carr**  
+44 (0) 7896 899 798  
megan.carr@levyrealestate.co.uk

**Calum Holden**  
+44 (0) 7508 610 454  
calum.holden@levyrealestate.co.uk