

**FOR LEASE**

# *950 JOHN DALY BOULEVARD DALY CITY, CALIFORNIA*



## *Property Highlights*

- **Suite 100:** ±4,249 SF
  - \* Asking Rate: \$3.25/SF Full Service
  - \* Available Now
  - \* Rent can be phased in to accommodate smaller tenant
- **Suite 340:** ±587 SF
  - \* Asking Rate: \$3.25/SF Full Service
  - \* Available Now
- Procuring Fee: \$2.00/SF/Year
- Walking Distance to Retail Amenities

## **PLEASE CONTACT:**

**Robert McSweeney**

+1 650 759 0202

bob.mcsweeney@cbre.com

Lic. 00934240

**Matt Murray**

+1 408 781 9322

matt.murray@cbre.com

Lic. 02083830

© 2026 CBRE, Inc. All rights reserved. This information has been obtained from sources believed reliable, but has not been verified for accuracy or completeness. You should conduct a careful, independent investigation of the property and verify all information. Any reliance on this information is solely at your own risk. CBRE and the CBRE logo are service marks of CBRE, Inc. All other marks displayed on this document are the property of their respective owners, and the use of such logos does not imply any affiliation with or endorsement of CBRE. Photos herein are the property of their respective owners. Use of these images without the express written consent of the owner is prohibited.

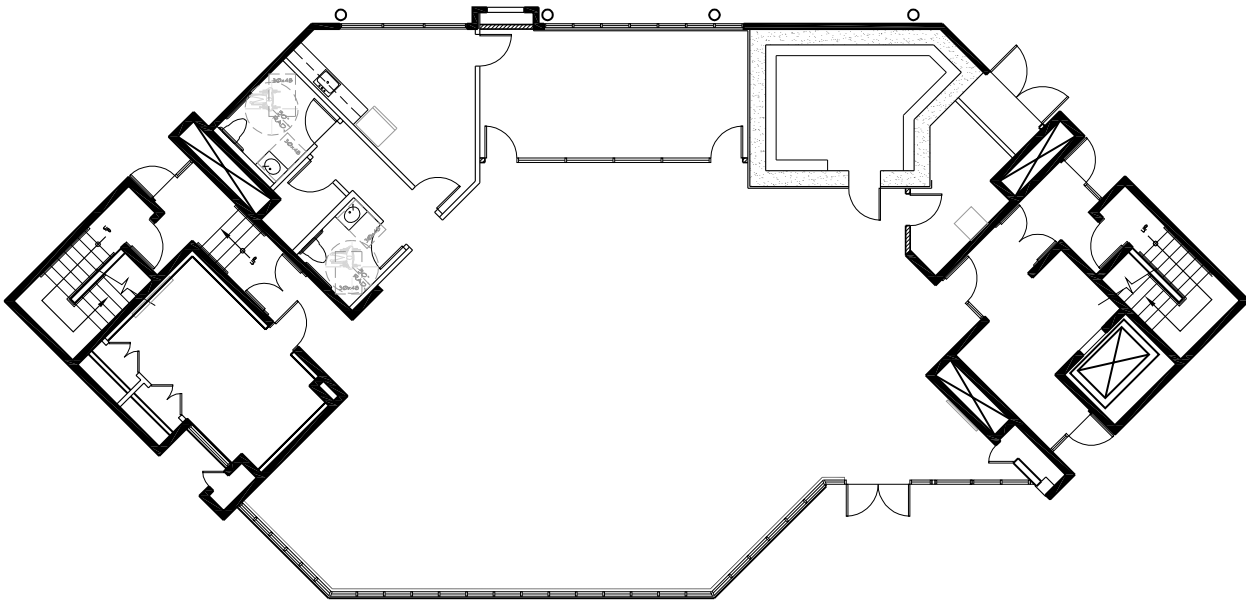
**FOR LEASE**

# 950 JOHN DALY BLVD DALY CITY, CALIFORNIA

## FLOOR PLAN

---

### SUITE 100 (±4,249 SF)



### SUITE 340 (±587 SF)

