

# FOR LEASE

± 7,000 SF

3728 NW 43<sup>rd</sup> St | Miami, FL 33142

*Alliance MIA Logistics Center*

OWNED & OPERATED BY:



ALLIANCE HP

Kevin Perez

(786) 657-6736

kevin@thehypegroup.com

Raul Pino

(786) 503-5583

raul@thehypegroup.com



## ABOUT THE PROPERTY

### Prime Industrial Warehouse

This versatile ±7,000 SF industrial unit offers a spacious layout ideal for a variety of business operations. The property features two large street-level drive-in bay doors for easy access, expansive high ceilings, and dedicated office space to support both administrative and operational needs.

A private, fully secured loading and parking area provides enhanced security and convenience, making it well-suited for businesses requiring outdoor storage or frequent deliveries. The fenced-in lot ensures peace of mind while maintaining efficient functionality for day-to-day operations.

## BUILDING HIGHLIGHTS



Secured fenced in unit



Professionally managed



7,000 SF



Expansive high ceilings



2 Street Level Bay Doors



Office Space Available



Private, fully secured loading & parking area



Roof Under warranty



East airport sub-market location

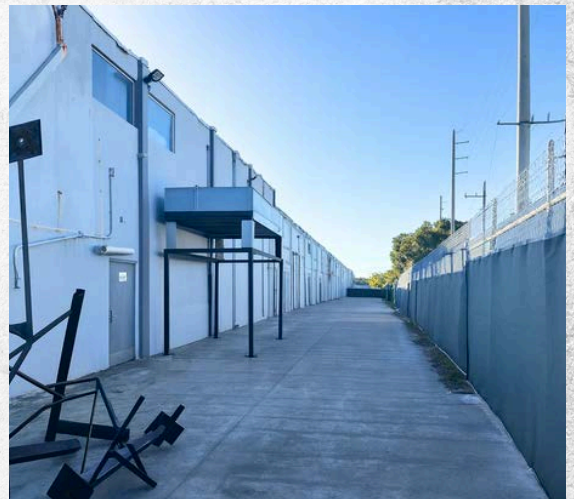
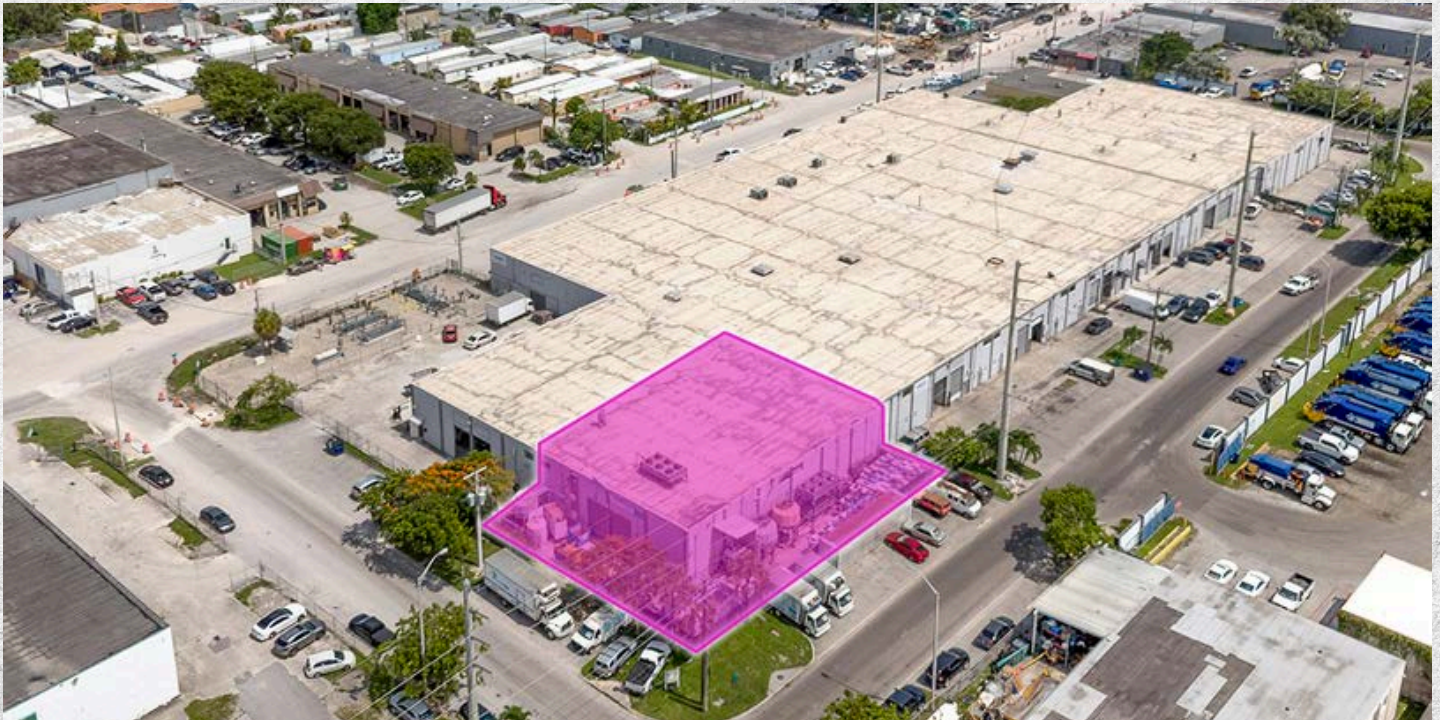


All electric is 3-phase 120/240V with a high leg; B phase is 240V to ground.



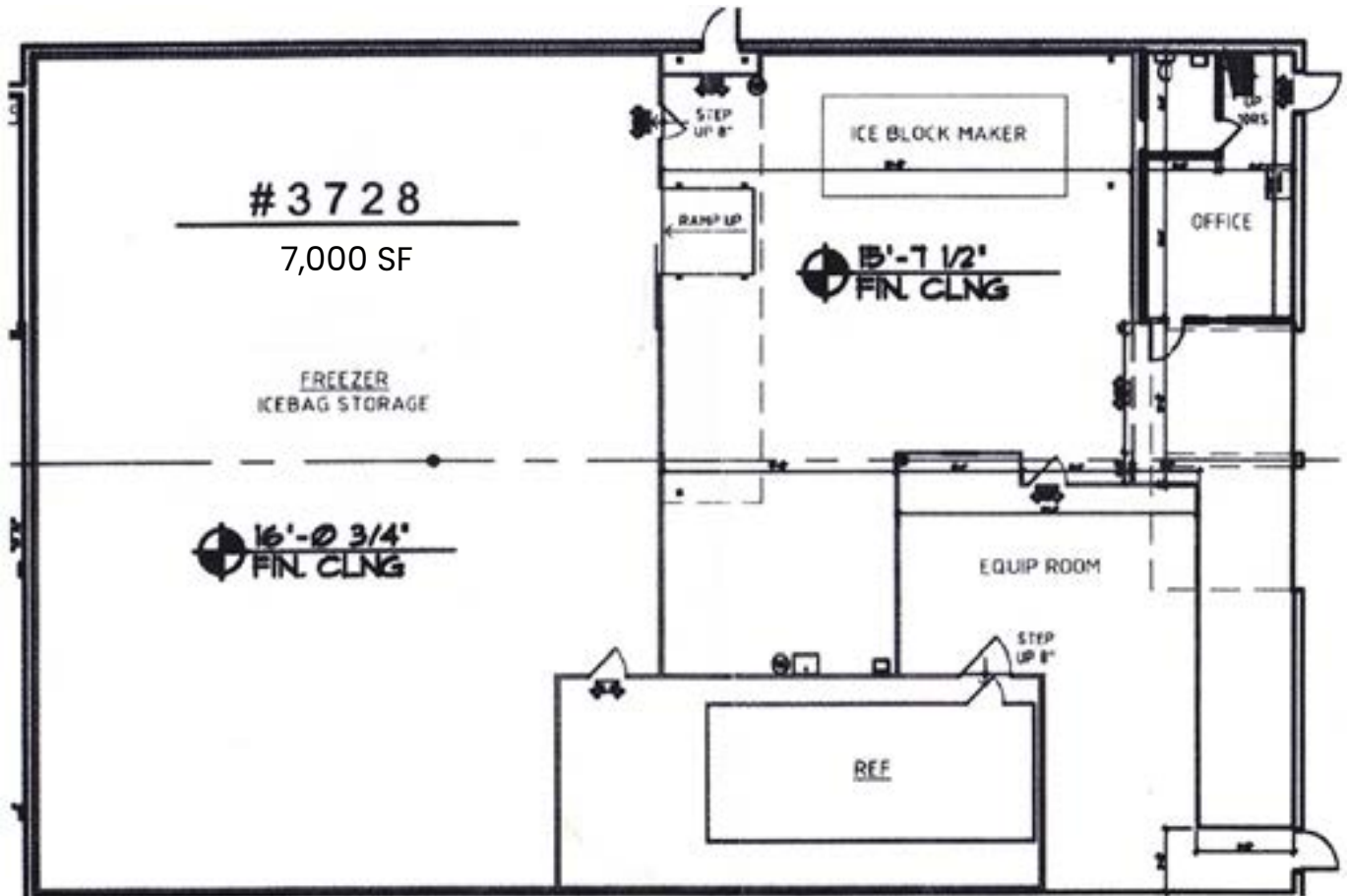
# Property Photos

3728 NW 43<sup>rd</sup> St | Miami, FL 33142



# Floor Plan - #3728

3728 NW 43<sup>rd</sup> St | Miami, FL 33142



OVERALL FLOOR PLAN | UNIT #3728 | 7,000 SF



## CONTACT US!

**Kevin Perez**

(786) 657-6736

[kevin@thehypegroup.com](mailto:kevin@thehypegroup.com)

**Raul Pino**

(786) 503-5583

[raul@thehypegroup.com](mailto:raul@thehypegroup.com)

**Pablo Vignolo**

(305) 303-3837

[pablo@thehypegroup.com](mailto:pablo@thehypegroup.com)

### Disclaimer

All information provided in this marketing material is sourced from reliable channels and is subject to errors, omissions, changes, or withdrawal of listings from sale or lease without notice. All square footage, dimensions, floor plans, and technical specifications are approximate and should be independently verified.



[www.thehypegroup.com](http://www.thehypegroup.com)



[www.alliancehp.com](http://www.alliancehp.com)