

3600 Market Street

Philadelphia, PA



Office Space for Lease

- 960 - 7,150 sf suites available
- Esther Klein Art Gallery in the lobby
- Old Nelson's Deli on the ground floor
- Adjacent to Penn and Drexel campuses
- Across the street from 3675 Market Street and the Quorum Conference Facility
- Access to Amtrak, SEPTA Market Frankford line, trolley, bus, and LUCY loop

Leasing Contact

Paul Garvey

+1 215 963 4013

paul.garvey@cushwake.com

Brian Young

+1 215 963 4155

brian.young@cushwake.com



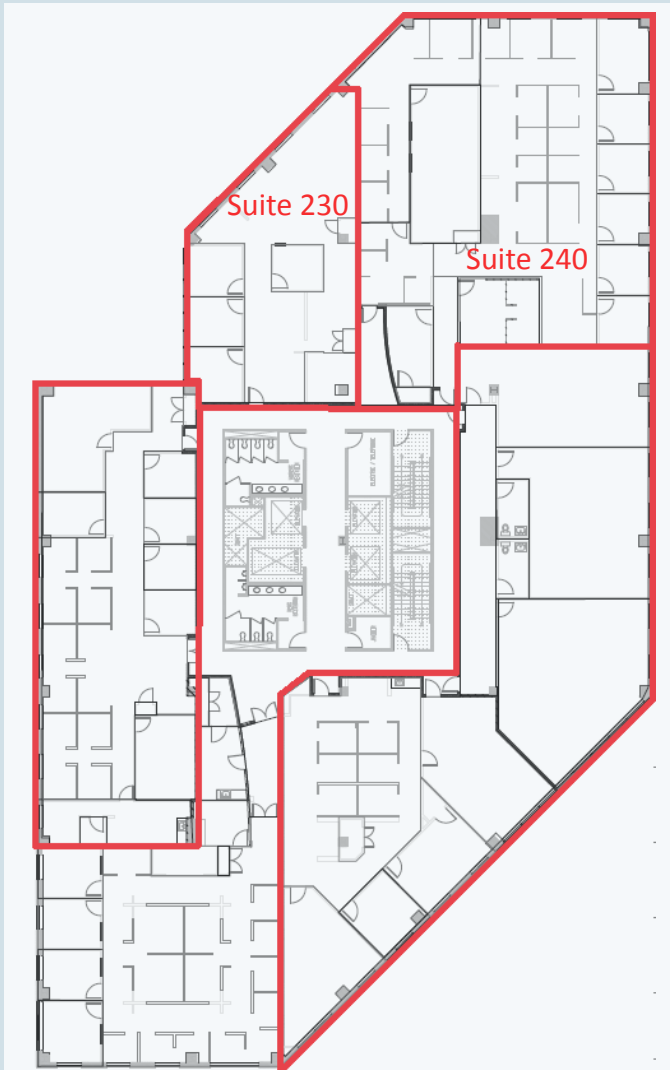
3600 Market Street

Philadelphia, PA



AVAILABILITIES

Suites 230 and 240 (2,000 - 7,150 sf)



Suite 320 (960 sf)

